

## Product datasheet for **TA307965**

### CTBP2 Rabbit Polyclonal Antibody

#### Product data:

Product Type:	Primary Antibodies
Applications:	IF, WB
Recommended Dilution:	ICC/IF:1:100-1:1000; WB:1:500-1:3000
Reactivity:	Human (Predicted: Mouse)
Host:	Rabbit
Isotype:	IgG
Clonality:	Polyclonal
Immunogen:	Recombinant fragment corresponding to a region within amino acids 197 and 417 of CtBP2 (Uniprot ID#P56545)
Formulation:	0.1M Tris, 0.1M Glycine, 10% Glycerol (pH7). 0.01% Thimerosal was added as a preservative.
Concentration:	lot specific
Purification:	Purified by antigen-affinity chromatography.
Conjugation:	Unconjugated
Storage:	Store at -20°C as received.
Stability:	Stable for 12 months from date of receipt.
Predicted Protein Size:	106 kDa
Gene Name:	C-terminal binding protein 2
Database Link:	<a href="#">NP_001077383</a> <a href="#">Entrez Gene 13017 Mouse</a> <a href="#">Entrez Gene 1488 Human</a> <a href="#">P56545</a>
Background:	This gene produces alternative transcripts encoding two distinct proteins. One protein is a transcriptional repressor, while the other isoform is a major component of specialized synapses known as synaptic ribbons. Both proteins contain a NAD <sup>+</sup> binding domain similar to NAD <sup>+</sup> -dependent 2-hydroxyacid dehydrogenases. A portion of the 3' untranslated region was used to map this gene to chromosome 21q21.3; however, it was noted that similar loci elsewhere in the genome are likely. Blast analysis shows that this gene is present on chromosome 10. [provided by RefSeq]
Synonyms:	C-terminal binding protein 2; OTTHUMP00000020699; OTTHUMP00000020701; ribeye



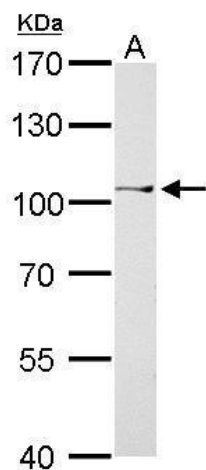
[View online »](#)

**Note:** Seq homology of immunogen across species: Mouse (100%)

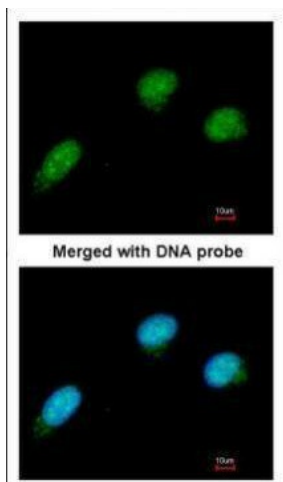
**Protein Families:** Stem cell - Pluripotency, Stem cell relevant signaling - Wnt Signaling pathway

**Protein Pathways:** Chronic myeloid leukemia, Notch signaling pathway, Pathways in cancer, Wnt signaling pathway

**Product images:**



CtBP2 antibody detects CTBP2 protein by Western blot analysis. A. 30 ug A375 whole cell lysate/extract. 7.5 % SDS-PAGE. CtBP2 antibody (TA307965) dilution: 1:500



Immunofluorescence analysis of paraformaldehyde-fixed HeLa, using CTBP2 (TA307965) antibody at 1:100 dilution.