

Product datasheet for **TA307960**

RAB2B Rabbit Polyclonal Antibody

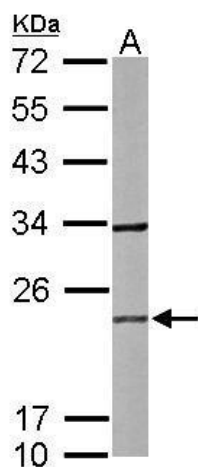
Product data:

Product Type:	Primary Antibodies
Applications:	IF, IHC, WB
Recommended Dilution:	ICC/IF:1:100-1:1000; IHC:1:100-1:1000; WB:1:500-1:3000
Reactivity:	Human, Mouse
Host:	Rabbit
Isotype:	IgG
Clonality:	Polyclonal
Immunogen:	Recombinant fragment corresponding to a region within amino acids 1 and 216 of RAB2B (Uniprot ID#Q8WUD1)
Formulation:	0.1M Tris, 0.1M Glycine, 10% Glycerol (pH7). 0.01% Thimerosal was added as a preservative.
Concentration:	lot specific
Purification:	Purified by antigen-affinity chromatography.
Conjugation:	Unconjugated
Storage:	Store at -20°C as received.
Stability:	Stable for 12 months from date of receipt.
Predicted Protein Size:	24 kDa
Gene Name:	RAB2B, member RAS oncogene family
Database Link:	NP_116235 Entrez Gene 76338 Mouse Entrez Gene 84932 Human Q8WUD1
Background:	Members of the Rab protein family are nontransforming monomeric GTP-binding proteins of the Ras superfamily that contain 4 highly conserved regions involved in GTP binding and hydrolysis. Rab proteins are prenylated, membrane-bound proteins involved in vesicular fusion and trafficking; see MIM 179508. [supplied by OMIM]
Synonyms:	FLJ14824
Protein Families:	Druggable Genome

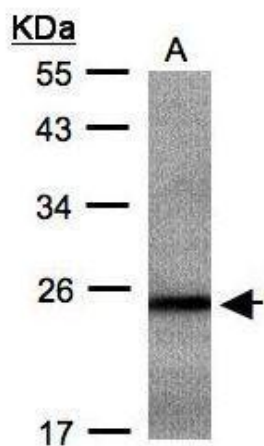


[View online »](#)

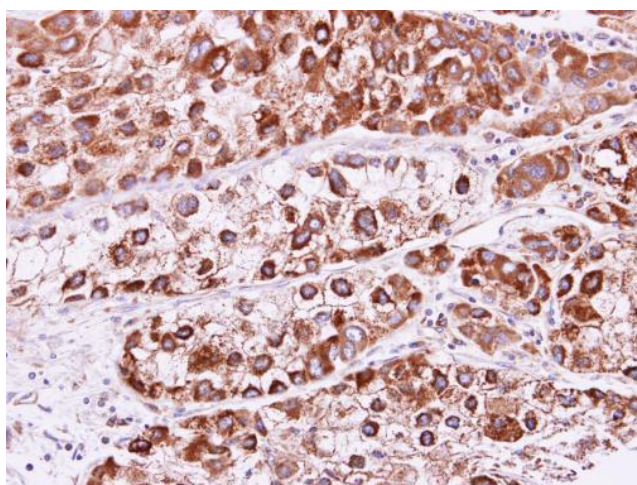
Product images:



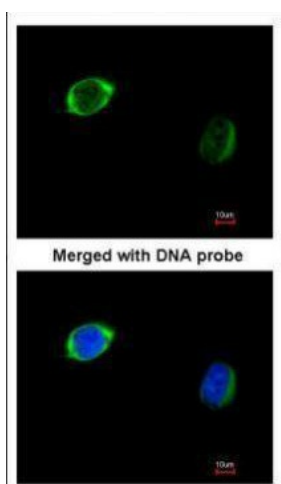
Sample (50 ug of whole cell lysate). A: mouse brain. 12% SDS PAGE. TA307960 diluted at 1:1000.



Sample (30 ug whole cell lysate). A: Hep G2. 12% SDS PAGE. TA307960 diluted at 1:500



RAB2B antibody detects RAB2B protein at cytoplasm and membrane on Liver carcinoma by immunohistochemical analysis. Sample: Paraffin-embedded Liver carcinoma. RAB2B antibody (TA307960) dilution: 1:250.



Immunofluorescence analysis of paraformaldehyde-fixed HeLa, using RAB2B (TA307960) antibody at 1:200 dilution.