

Product datasheet for **TA307958**

RAB6A Rabbit Polyclonal Antibody

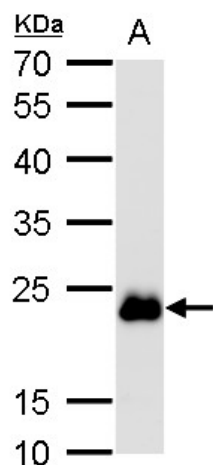
Product data:

Product Type:	Primary Antibodies
Applications:	IF, IHC, WB
Recommended Dilution:	ICC/IF:1:100-1:1000; IHC:1:100-1:1000; WB:1:500-1:3000
Reactivity:	Human (Predicted: Chicken, Pig, Xenopus, Zebrafish, Bovine)
Host:	Rabbit
Isotype:	IgG
Clonality:	Polyclonal
Immunogen:	Recombinant fragment corresponding to a region within amino acids 1 and 208 of RAB6A (Uniprot ID#P20340)
Formulation:	1XPBS, 20% Glycerol (pH7). 0.025% ProClin 300 was added as a preservative.
Concentration:	lot specific
Purification:	Purified by antigen-affinity chromatography.
Conjugation:	Unconjugated
Storage:	Store at -20°C as received.
Stability:	Stable for 12 months from date of receipt.
Predicted Protein Size:	24 kDa
Gene Name:	RAB6A, member RAS oncogene family
Database Link:	NP_002860 Entrez Gene 5870 Human P20340
Synonyms:	RAB6
Note:	Seq homology of immunogen across species: Chicken (97%), Pig (97%), Xenopus laevis (96%), Zebrafish (85%), Bovine (98%), Xenopus tropicalis (97%)
Protein Families:	Druggable Genome

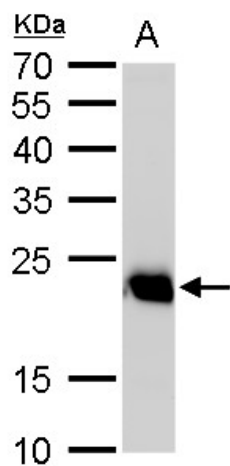


[View online »](#)

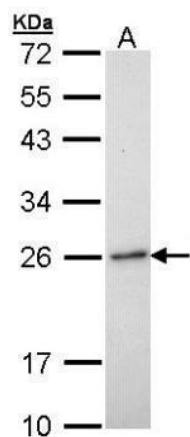
Product images:



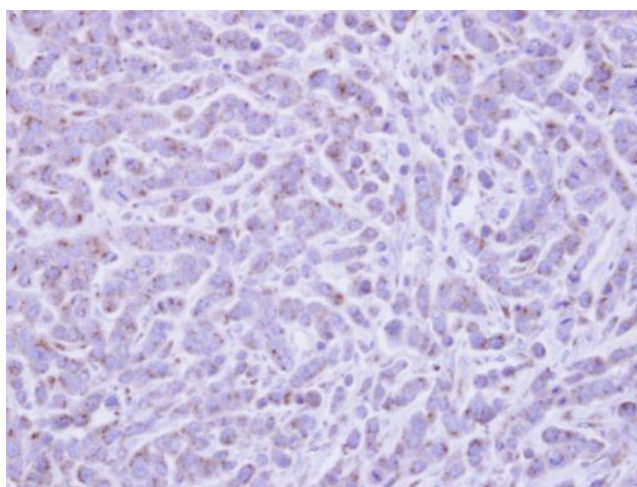
RAB6A antibody detects RAB6A protein by western blot analysis. A. 50 ug mouse brain lysate/extract. 12 % SDS-PAGE. RAB6A antibody (TA307958) dilution: 1:1000



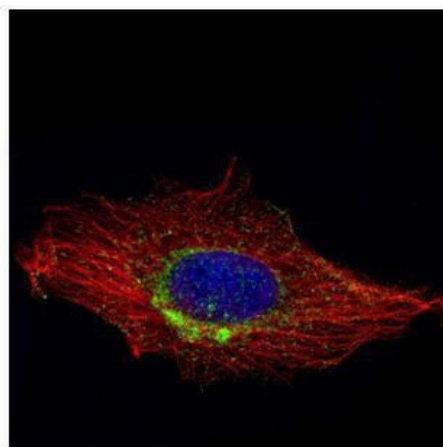
RAB6A antibody detects RAB6A protein by western blot analysis. A. 50 ug rat brain cell lysate/extract. 12 % SDS-PAGE. RAB6A antibody (TA307958) dilution: 1:1000



Sample (30 ug of whole cell lysate). A: H1299. 12% SDS PAGE. TA307958 diluted at 1:1000.



Immunohistochemical analysis of paraffin-embedded MDA-MB-468 xenograft, using RAB6A (TA307958) antibody at 1:500 dilution.



Confocal immunofluorescence analysis (Olympus FV10i) of methanol-fixed HeLa, using RAB6A (TA307958) antibody (Green) at 1:1000 dilution. Alpha-tubulin filaments were labeled with anti-alpha tubulin antibody (Red) at 1:2000.