

Product datasheet for **TA307957**

RAG2 Rabbit Polyclonal Antibody

Product data:

Product Type:	Primary Antibodies
Applications:	IF, IHC, WB
Recommended Dilution:	ICC/IF:1:100-1:1000; IHC:1:100-1:1000; WB:1:500-1:3000
Reactivity:	Human (Predicted: Mouse, Pig, Rabbit, Rat, Bovine)
Host:	Rabbit
Isotype:	IgG
Clonality:	Polyclonal
Immunogen:	Recombinant fragment corresponding to a region within amino acids 271 and 527 of RAG2 (Uniprot ID#P55895)
Formulation:	0.1M Tris, 0.1M Glycine, 10% Glycerol (pH7). 0.01% Thimerosal was added as a preservative.
Concentration:	lot specific
Purification:	Purified by antigen-affinity chromatography.
Conjugation:	Unconjugated
Storage:	Store at -20°C as received.
Stability:	Stable for 12 months from date of receipt.
Predicted Protein Size:	59 kDa
Gene Name:	recombination activating gene 2
Database Link:	NP_000527 Entrez Gene 19374 Mouse Entrez Gene 295953 Rat Entrez Gene 5897 Human P55895



[View online »](#)

Background:

This gene encodes a protein that is involved in the initiation of V(D)J recombination during B and T cell development. This protein forms a complex with the product of the adjacent recombination activating gene 1, and this complex can form double-strand breaks by cleaving DNA at conserved recombination signal sequences. The recombination activating gene 1 component is thought to contain most of the catalytic activity, while the N-terminal of the recombination activating gene 2 component is thought to form a six-bladed propeller in the active core that serves as a binding scaffold for the tight association of the complex with DNA. A C-terminal plant homeodomain finger-like motif in this protein is necessary for interactions with chromatin components, specifically with histone H3 that is trimethylated at lysine 4. Mutations in this gene cause Omenn syndrome, a form of severe combined immunodeficiency associated with autoimmune-like symptoms. [provided by RefSeq]

Synonyms:

RAG-2

Note:

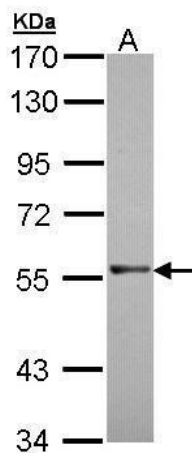
Seq homology of immunogen across species: Mouse (85%), Pig (90%), Rabbit (91%), Rat (86%), Bovine (91%)

Protein Families:

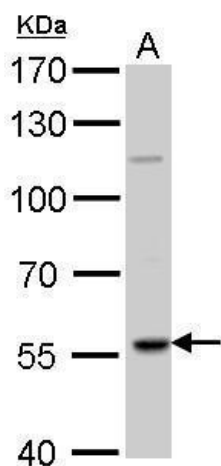
Druggable Genome

Protein Pathways:

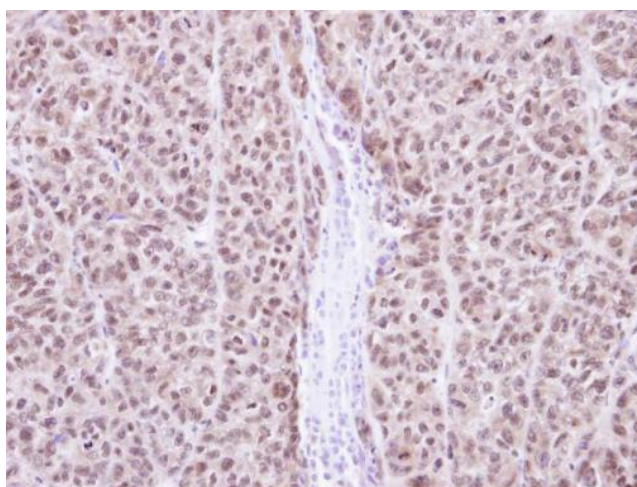
Primary immunodeficiency

Product images:

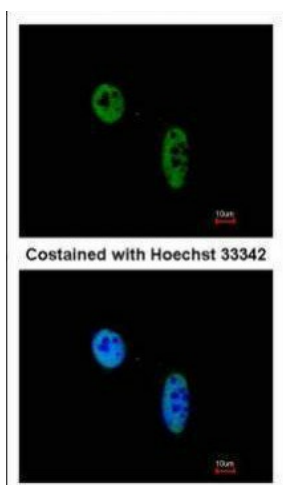
Sample (30 ug of whole cell lysate). A: Molt-4.
7.5% SDS PAGE. TA307957 diluted at 1:1000.



RAG2 antibody detects RAG2 protein by Western blot analysis. A. 50 ug Rat thymus lysate/extract. 7.5 % SDS-PAGE. RAG2 antibody (TA307957) dilution: 1:1000



Immunohistochemical analysis of paraffin-embedded DLD1 Xenograft, using RAG2 (TA307957) antibody at 1:100 dilution.



Immunofluorescence analysis of paraformaldehyde-fixed HeLa, using RAG2 (TA307957) antibody at 1:200 dilution.