

Product datasheet for **TA307956**

IL12RB2 Rabbit Polyclonal Antibody

Product data:

Product Type:	Primary Antibodies
Applications:	WB
Recommended Dilution:	WB:1:1000-1:10000
Reactivity:	Human (Predicted: Dog)
Host:	Rabbit
Isotype:	IgG
Clonality:	Polyclonal
Immunogen:	Recombinant fragment corresponding to a region within amino acids 323 and 695 of IL-12 Receptor beta2 (Uniprot ID#Q99665)
Formulation:	0.1M Tris, 0.1M Glycine, 10% Glycerol (pH7). 0.01% Thimerosal was added as a preservative.
Concentration:	lot specific
Purification:	Purified by antigen-affinity chromatography.
Conjugation:	Unconjugated
Storage:	Store at -20°C as received.
Stability:	Stable for 12 months from date of receipt.
Predicted Protein Size:	97 kDa
Gene Name:	interleukin 12 receptor subunit beta 2
Database Link:	NP_001550 Entrez Gene 489550 Dog Entrez Gene 3595 Human Q99665
Background:	The protein encoded by this gene is a type I transmembrane protein identified as a subunit of the interleukin 12 receptor complex. The coexpression of this and IL12RB1 proteins was shown to lead to the formation of high-affinity IL12 binding sites and reconstitution of IL12 dependent signaling. The expression of this gene is up-regulated by interferon gamma in Th1 cells, and plays a role in Th1 cell differentiation. The up-regulation of this gene is found to be associated with a number of infectious diseases, such as Crohn's disease and leprosy, which is thought to contribute to the inflammatory response and host defense. [provided by RefSeq]



[View online »](#)

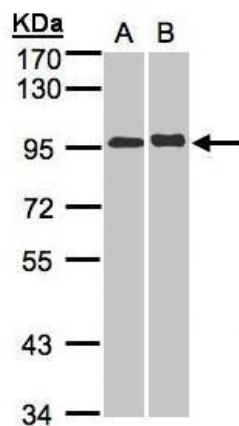
Synonyms: RP11-102M16.1

Note: Seq homology of immunogen across species: Dog (80%)

Protein Families: Druggable Genome, Transmembrane

Protein Pathways: Cytokine-cytokine receptor interaction, Jak-STAT signaling pathway

Product images:



Sample (30 ug whole cell lysate). A:A431. B: Hep G2. 7.5% SDS PAGE. TA307956 diluted at 1:5000