

Product datasheet for **TA307955**

COX6A2 Rabbit Polyclonal Antibody

Product data:

Product Type:	Primary Antibodies
Applications:	IF, IHC, WB
Recommended Dilution:	ICC/IF:1:100-1:1000; IHC:1:100-1:1000; WB:1:500-1:3000
Reactivity:	Human (Predicted: Rat, Rhesus Monkey, Mouse)
Host:	Rabbit
Isotype:	IgG
Clonality:	Polyclonal
Immunogen:	Synthetic peptide corresponding to a region within amino acids 34 and 97 of COX6A2 (Uniprot ID#Q02221)
Formulation:	0.1M Tris, 0.1M Glycine, 10% Glycerol (pH7). 0.01% Thimerosal was added as a preservative.
Concentration:	lot specific
Purification:	Purified by antigen-affinity chromatography.
Conjugation:	Unconjugated
Storage:	Store at -20°C as received.
Stability:	Stable for 12 months from date of receipt.
Predicted Protein Size:	11 kDa
Gene Name:	cytochrome c oxidase subunit 6A2
Database Link:	NP_005196 Entrez Gene 12862 Mouse Entrez Gene 25278 Rat Entrez Gene 1339 Human Q02221



[View online »](#)

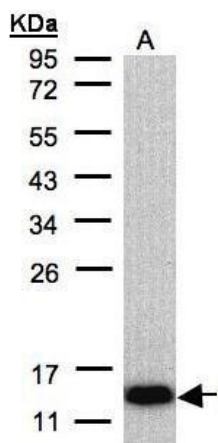
Background: Cytochrome c oxidase (COX), the terminal enzyme of the mitochondrial respiratory chain, catalyzes the electron transfer from reduced cytochrome c to oxygen. It is a heteromeric complex consisting of 3 catalytic subunits encoded by mitochondrial genes and multiple structural subunits encoded by nuclear genes. The mitochondrially-encoded subunits function in electron transfer, and the nuclear-encoded subunits may be involved in the regulation and assembly of the complex. This nuclear gene encodes polypeptide 2 (heart/muscle isoform) of subunit VIa, and polypeptide 2 is present only in striated muscles. Polypeptide 1 (liver isoform) of subunit VIa is encoded by a different gene, and is found in all non-muscle tissues. These two polypeptides share 66% amino acid sequence identity. [provided by RefSeq]

Synonyms: COX6AH; COXVIAH

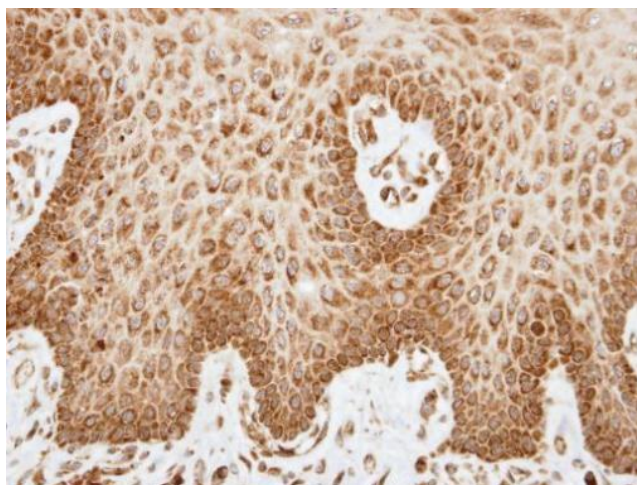
Note: Seq homology of immunogen across species: Mouse (93%), Rat (86%), Rhesus Monkey (100%)

Protein Pathways: Alzheimer's disease, Cardiac muscle contraction, Huntington's disease, Metabolic pathways, Oxidative phosphorylation, Parkinson's disease

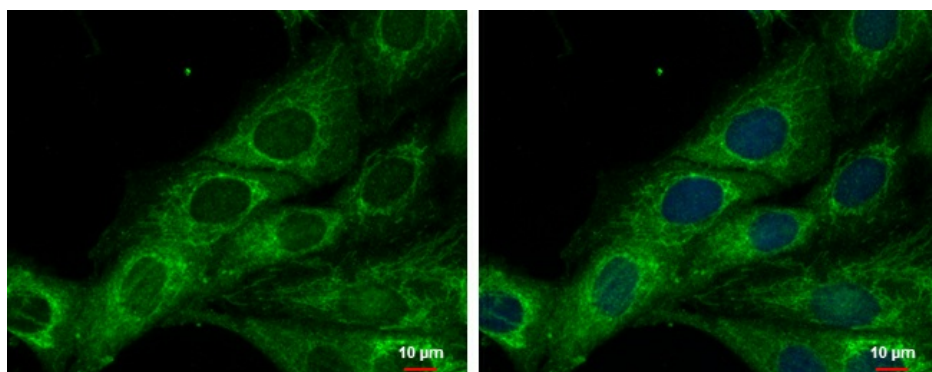
Product images:



Sample (30 ug of whole cell lysate). A:Raji. 12% SDS PAGE. TA307955 diluted at 1:500



Immunohistochemical analysis of paraffin-embedded SCC4 xenograft, using COX6A2 (TA307955) antibody at 1:100 dilution.



COX6A2 antibody [N3C3] detects COX6A2 protein at mitochondria by immunofluorescent analysis. Sample: SK-N-SH cells were fixed in 2% paraformaldehyde/culture medium at 37°C for 30min. Green: COX6A2 protein stained by COX6A2 antibody [N3C3] (TA307955) dilu