

Product datasheet for **TA307950**

COMMD7 Rabbit Polyclonal Antibody

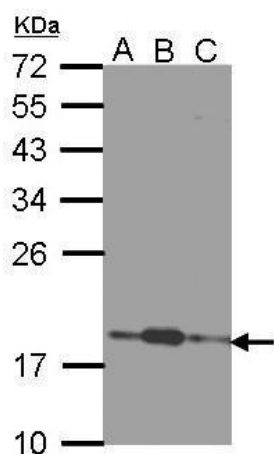
Product data:

Product Type:	Primary Antibodies
Applications:	IF, IHC, WB
Recommended Dilution:	ICC/IF:1:100-1:1000; IHC:1:100-1:1000; WB:1:500-1:3000
Reactivity:	Human (Predicted: Mouse, Rat)
Host:	Rabbit
Isotype:	IgG
Clonality:	Polyclonal
Immunogen:	Synthetic peptide corresponding to a region within amino acids 52 and 142 of COMMD7
Formulation:	0.1M Tris, 0.1M Glycine, 10% Glycerol (pH7). 0.01% Thimerosal was added as a preservative.
Concentration:	lot specific
Purification:	Purified by antigen-affinity chromatography.
Conjugation:	Unconjugated
Storage:	Store at -20°C as received.
Stability:	Stable for 12 months from date of receipt.
Predicted Protein Size:	23 kDa
Gene Name:	COMM domain containing 7
Database Link:	NP_001092809 Entrez Gene 99311 MouseEntrez Gene 296285 RatEntrez Gene 149951 Human Q86VX2
Synonyms:	C20orf92; dj1085F17.3
Note:	Seq homology of immunogen across species: Mouse (100%), Rat (100%)

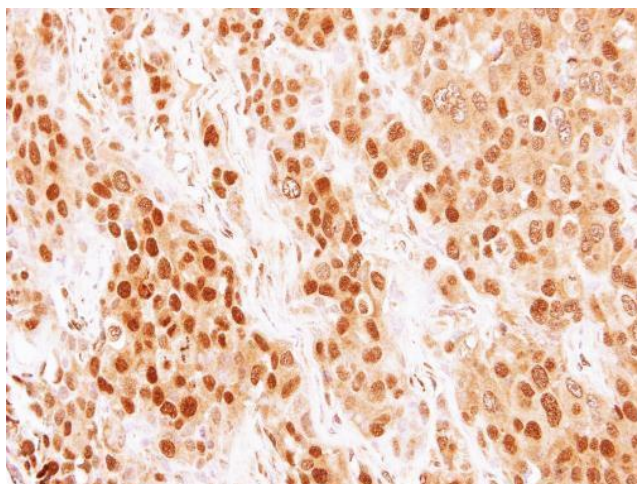


[View online »](#)

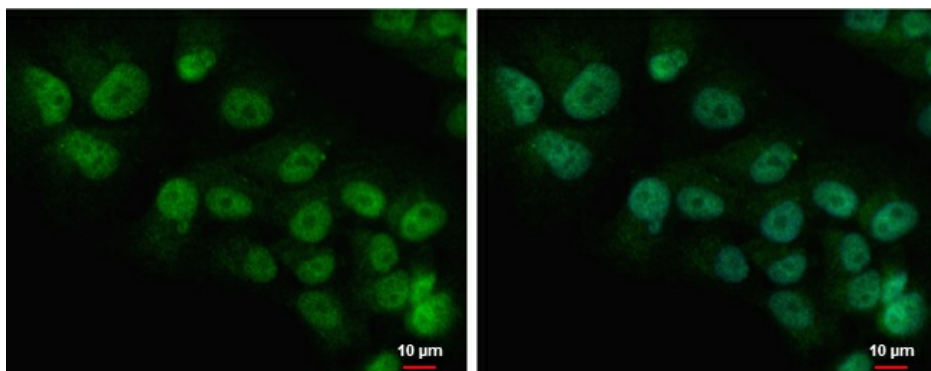
Product images:



Sample (30 ug of whole cell lysate). A: 293T. B: A431. C: H1299. 12% SDS PAGE. TA307950 diluted at 1:1000.



Immunohistochemical analysis of paraffin-embedded BT474 xenograft, using COMMD7 (TA307950) antibody at 1:500 dilution.



COMMD7 antibody detects COMMD7 protein at nucleus and cytoplasm by immunofluorescent analysis. Sample: SK-N-AS cells were fixed in 4% paraformaldehyde at RT for 15 min. Green: COMMD7 protein stained by COMMD7 antibody (TA307950) diluted at 1:500. Blue: Ho