

## Product datasheet for **TA307948**

### CSB (ERCC6) Rabbit Polyclonal Antibody

#### Product data:

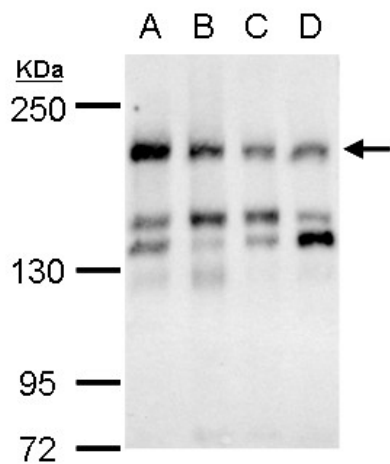
Product Type:	Primary Antibodies
Applications:	IF, IHC, WB
Recommended Dilution:	ICC/IF:1:100-1:1000; IHC:1:100-1:1000; WB:1:500-1:3000
Reactivity:	Human
Host:	Rabbit
Isotype:	IgG
Clonality:	Polyclonal
Immunogen:	Recombinant fragment corresponding to a region within amino acids 346 and 766 of CSB (Uniprot ID#Q03468)
Formulation:	0.2M Tris, 0.2M Glycine, 1mM EGTA, 50% Glycerol (pH7). 0.025% ProClin 300 was added as a preservative.
Purification:	Purified by antigen-affinity chromatography.
Conjugation:	Unconjugated
Storage:	Store at -20°C as received.
Stability:	Stable for 12 months from date of receipt.
Predicted Protein Size:	168 kDa
Gene Name:	ERCC excision repair 6, chromatin remodeling factor
Database Link:	<a href="#">NP_000115</a> <a href="#">Entrez Gene 2074 Human</a> <a href="#">Q03468</a>
Background:	This gene encodes a DNA-binding protein that is important in transcription-coupled excision repair. The protein has ATP-stimulated ATPase activity; there are contradictory publications reporting presence or absence of helicase activity. The protein appears to interact with several transcription and excision repair proteins, and may promote complex formation at repair sites. Mutations in this gene result in Cockayne syndrome type B. [provided by RefSeq]
Synonyms:	ARMD5; CKN2; COFS; COFS1; CSB; RAD26; UVSS1
Protein Families:	Druggable Genome



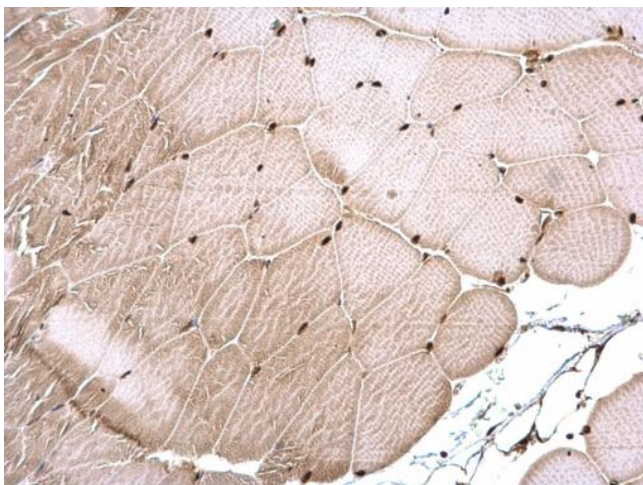
[View online »](#)

Protein Pathways: Nucleotide excision repair

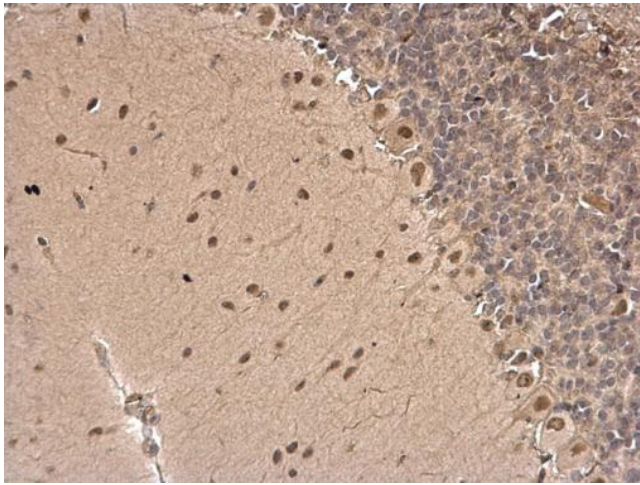
### Product images:



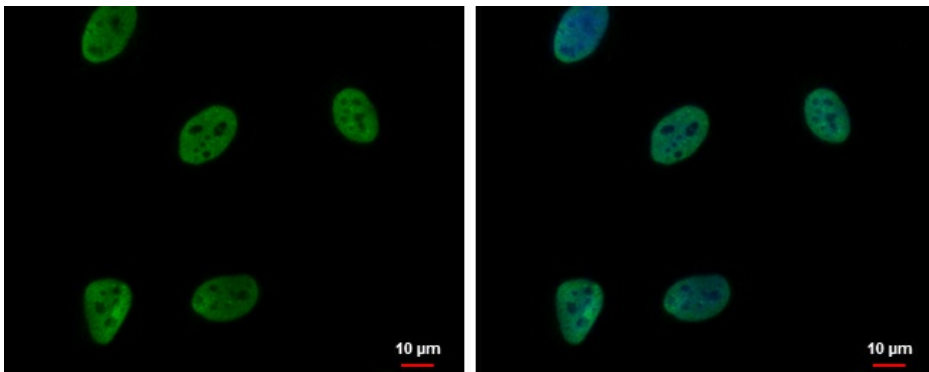
CSB antibody [N2C1], Internal detects CSB protein by western blot analysis. A. 30 ug 294T whole cell lysate/extract. B. 30 ug A432 whole cell lysate/extract. C. 31 ug HeLa whole cell lysate/extract. D. 30 ug HepG3 whole cell lysate/extract. 5 % SDS-PAGE.



CSB antibody [N2C1], Internal detects CSB protein at nucleus on mouse muscle by immunohistochemical analysis. Sample: Paraffin-embedded mouse muscle. CSB antibody [N2C1], Internal (TA307948) dilution: 1:500.



CSB antibody [N2C1], Internal detects CSB protein at nucleus on rat hind brain by immunohistochemical analysis. Sample: Paraffin-embedded rat hind brain. CSB antibody [N2C1], Internal (TA307948) dilution: 1:500.



CSB antibody [N2C1], Internal detects CSB protein at nucleus by immunofluorescent analysis. Sample: HeLa cells were fixed in 4% paraformaldehyde at RT for 15 min. Green: CSB protein stained by CSB antibody [N2C1], Internal (TA307948) diluted at 1:500. Blu