

## Product datasheet for **TA307946**

### SART1 Rabbit Polyclonal Antibody

#### Product data:

Product Type:	Primary Antibodies
Applications:	IF, IHC, WB
Recommended Dilution:	ICC/IF:1:100-1:1000; IHC:1:100-1:1000; WB:1:1000-1:10000
Reactivity:	Human, Mouse
Host:	Rabbit
Isotype:	IgG
Clonality:	Polyclonal
Immunogen:	Recombinant fragment corresponding to a region within amino acids 137 and 447 of SART1 (Uniprot ID#O43290)
Formulation:	0.1M Tris, 0.1M Glycine, 10% Glycerol (pH7). 0.01% Thimerosal was added as a preservative.
Purification:	Purified by antigen-affinity chromatography.
Conjugation:	Unconjugated
Storage:	Store at -20°C as received.
Stability:	Stable for 12 months from date of receipt.
Predicted Protein Size:	90 kDa
Gene Name:	squamous cell carcinoma antigen recognized by T-cells 1
Database Link:	<a href="#">NP_005137</a> <a href="#">Entrez Gene 20227 Mouse</a> <a href="#">Entrez Gene 9092 Human</a> <a href="#">O43290</a>



[View online »](#)

**Background:**

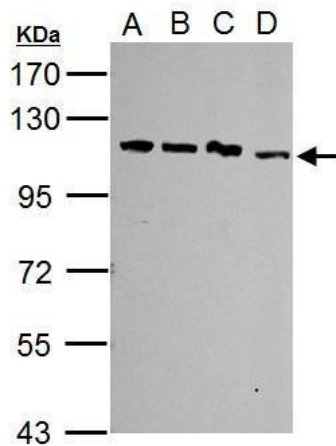
This gene encodes two proteins, the SART1(800) protein expressed in the nucleus of the majority of proliferating cells, and the SART1(259) protein expressed in the cytosol of epithelial cancers. The SART1(259) protein is translated by the mechanism of -1 frameshifting during posttranscriptional regulation; its full-length sequence is not published yet. The two encoded proteins are thought to be involved in the regulation of proliferation. Both proteins have tumor-rejection antigens. The SART1(259) protein possesses tumor epitopes capable of inducing HLA-A2402-restricted cytotoxic T lymphocytes in cancer patients. This SART1(259) antigen may be useful in specific immunotherapy for cancer patients and may serve as a paradigmatic tool for the diagnosis and treatment of patients with atopy. The SART1(259) protein is found to be essential for the recruitment of the tri-snRNP to the pre-spliceosome in the spliceosome assembly pathway. [provided by RefSeq]

**Synonyms:**

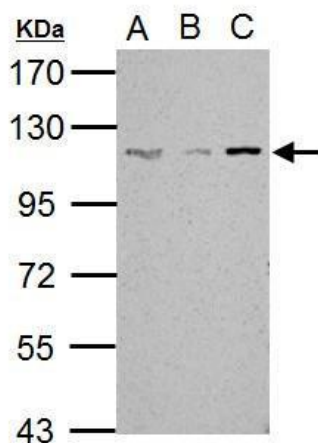
Ara1; HOMS1; SART1259; SNRNP110; Snu66

**Protein Pathways:**

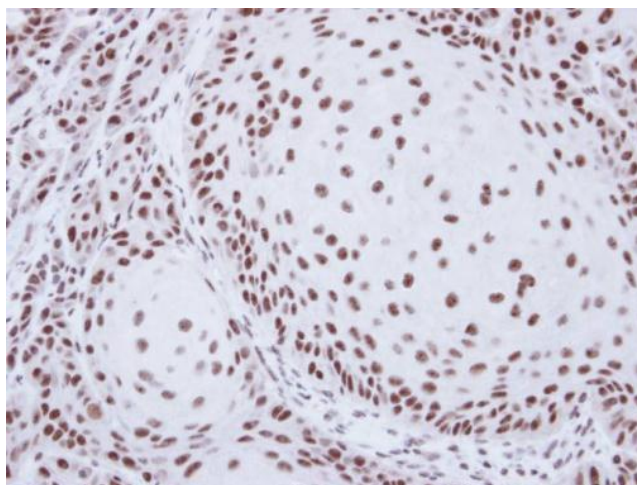
Spliceosome

**Product images:**

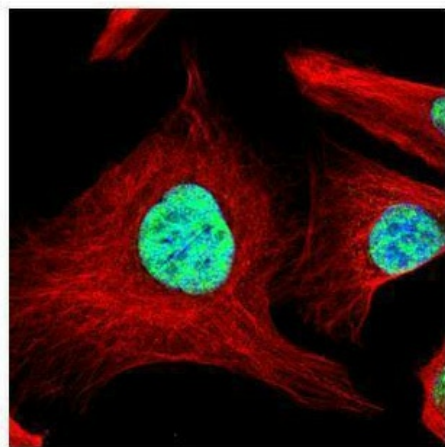
Sample (30 ug of whole cell lysate). A: Jurkat. B: Raji. C: K562. D: NCI-H929. 7.5% SDS PAGE. TA307946 diluted at 1:5000.



Sample (30 ug of whole cell lysate). A: NIH-3T3. B: J.C. C: BCL-1. 7.5% SDS PAGE. TA307946 diluted at 1:5000.



Immunohistochemical analysis of paraffin-embedded Cal27 xenograft, using SART1 (TA307946) antibody at 1:500 dilution.



Confocal immunofluorescence analysis (Olympus FV10i) of paraformaldehyde-fixed U2OS, using SART1 (TA307946) antibody (Green) at 1:500 dilution. Alpha-tubulin filaments were labeled with anti-alpha tubulin antibody (Red) at 1:2000.