

## Product datasheet for **TA307939**

### OTUB1 Rabbit Polyclonal Antibody

#### Product data:

Product Type:	Primary Antibodies
Applications:	IF, WB
Recommended Dilution:	ICC/IF:1:100-1:1000; WB:1:500-1:3000
Reactivity:	Human, Mouse (Predicted: Rat, Pig, Bovine)
Host:	Rabbit
Isotype:	IgG
Clonality:	Polyclonal
Immunogen:	Recombinant fragment corresponding to a region within amino acids 1 and 149 of OTUB1 (Uniprot ID#Q96FW1)
Formulation:	1XPBS, 10% Glycerol (pH7). 0.01% Thimerosal was added as a preservative.
Concentration:	lot specific
Purification:	Purified by antigen-affinity chromatography.
Conjugation:	Unconjugated
Storage:	Store at -20°C as received.
Stability:	Stable for 12 months from date of receipt.
Predicted Protein Size:	31 kDa
Gene Name:	OTU deubiquitinase, ubiquitin aldehyde binding 1
Database Link:	<a href="#">NP_060140</a> <a href="#">Entrez Gene 107260 MouseEntrez Gene 293705 RatEntrez Gene 55611 Human Q96FW1</a>
Background:	The product of this gene is a member of the OTU (ovarian tumor) superfamily of predicted cysteine proteases. The encoded protein is a highly specific ubiquitin iso-peptidase, and cleaves ubiquitin from branched poly-ubiquitin chains but not from ubiquitinated substrates. It interacts with another ubiquitin protease and an E3 ubiquitin ligase that inhibits cytokine gene transcription in the immune system. It is proposed to function in specific ubiquitin-dependent pathways, possibly by providing an editing function for polyubiquitin chain growth. Alternative splicing results in multiple transcript variants. [provided by RefSeq]
Synonyms:	HSPC263; OTB1; OTU1

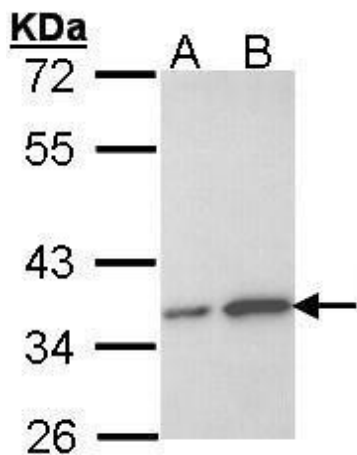


[View online »](#)

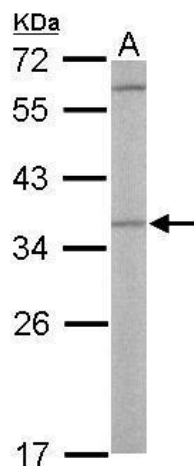
**Note:** Seq homology of immunogen across species: Rat (100%), Pig (100%), Bovine (100%)

**Protein Families:** Protease

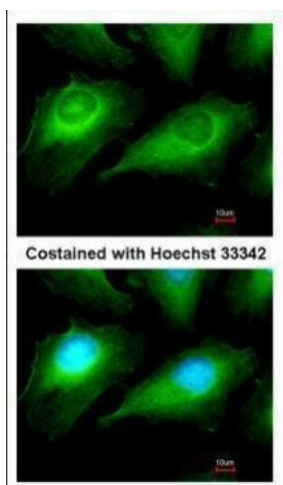
**Product images:**



Sample (30 ug of whole cell lysate). A: HeLa. B: Hep G2. 12% SDS PAGE. TA307939 diluted at 1:1000.



Sample (50 ug of whole cell lysate). A: Mouse liver. 12% SDS PAGE. TA307939 diluted at 1:500.



Immunofluorescence analysis of methanol-fixed HeLa, using OTUB1 (TA307939) antibody at 1:50 dilution.