

Product datasheet for **TA307937**

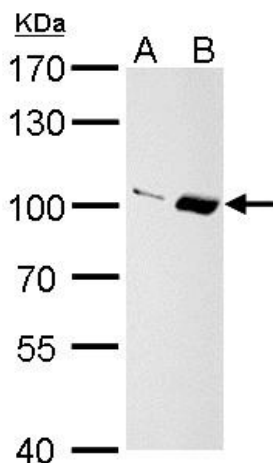
Importin 13 (IPO13) Rabbit Polyclonal Antibody

Product data:

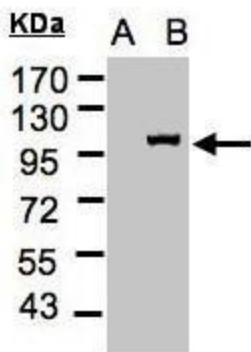
Product Type:	Primary Antibodies
Applications:	IF, IHC, IP, WB
Recommended Dilution:	WB:1:500-1:3000
Reactivity:	Human (Predicted: Mouse, Chicken, Bovine)
Host:	Rabbit
Isotype:	IgG
Clonality:	Polyclonal
Immunogen:	Synthetic peptide corresponding to a region within amino acids 901 and 963 of Importin 13 (Uniprot ID#O94829)
Formulation:	0.1M Tris, 0.1M Glycine, 10% Glycerol (pH7). 0.01% Thimerosal was added as a preservative.
Purification:	Purified by antigen-affinity chromatography.
Conjugation:	Unconjugated
Storage:	Store at -20°C as received.
Stability:	Stable for 12 months from date of receipt.
Predicted Protein Size:	108 kDa
Gene Name:	importin 13
Database Link:	NP_055467 Entrez Gene 230673 Mouse Entrez Gene 9670 Human O94829
Background:	This gene encodes a member of the importin-beta family of nuclear transport proteins. The encoded protein mediates the import of specific cargo proteins from the cytoplasm to the nucleus and is dependent on the Ras-related nuclear protein-GTPase system. The encoded protein is also involved in nuclear export of the eukaryotic translation initiation factor 1A.
Synonyms:	IMP13; KAP13; LGL2; RANBP13
Note:	Seq homology of immunogen across species: Mouse (100%), Chicken (92%), Bovine (100%)



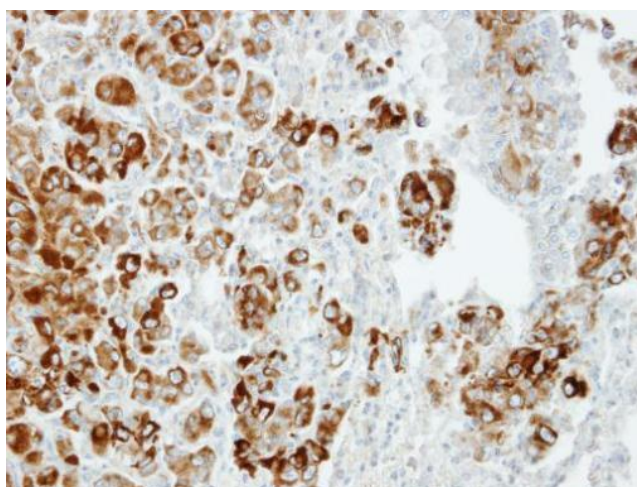
[View online »](#)

Product images:


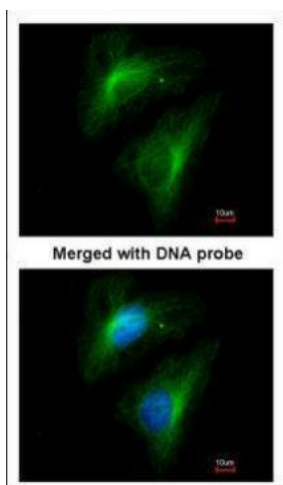
Importin 13 antibody [C3], C-term detects Importin 13 protein by Western blot analysis. A. 30 ug PC-12 whole cell lysate/extract. B. 30 ug Rat2 whole cell lysate/extract. 7.5 % SDS-PAGE. Importin 13 antibody [C3], C-term (TA307937) dilution: 1:1000



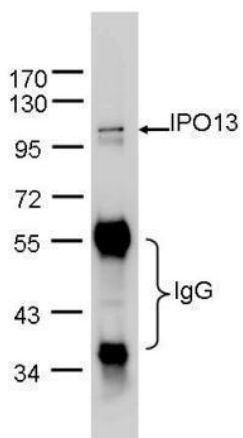
Western Blot analysis of IPO13 expression in transfected 293T cell line by IPO13 polyclonal antibody. A: Non-transfected lysate. B: IPO13 transfected lysate. 7.5% SDS PAGE. TA307937 diluted at 1:500



Immunohistochemical analysis of paraffin-embedded CL1-5 xenograft, using Importin 13 (TA307937) antibody at 1:100 dilution.



Immunofluorescence analysis of paraformaldehyde-fixed HeLa, using Importin 13 (TA307937) antibody at 1:200 dilution.



IPO13 was immunoprecipitated from 1 mg of HeLa whole cell lysate using 10 µg of anti-IPO13 antibody (TA307937). The precipitated IPO13 was detected by TA307937 diluted at 1:1000.