

Product datasheet for **TA307935**

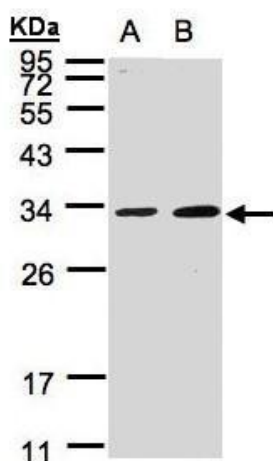
MAF1 Rabbit Polyclonal Antibody

Product data:

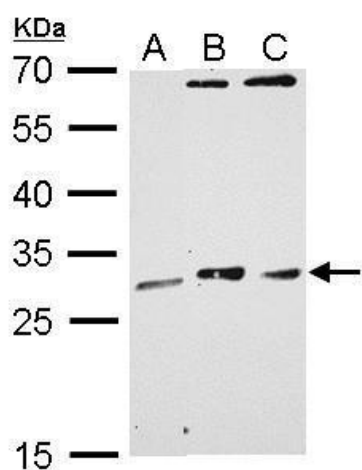
Product Type:	Primary Antibodies
Applications:	IF, IHC, WB
Recommended Dilution:	ICC/IF:1:100-1:1000; IHC:1:100-1:1000; WB:1:500-1:3000
Reactivity:	Human
Host:	Rabbit
Isotype:	IgG
Clonality:	Polyclonal
Immunogen:	Recombinant fragment corresponding to a region within amino acids 1 and 201 of MAF1 (Uniprot ID#Q9H063)
Formulation:	1XPBS, 20% Glycerol (pH7). 0.01% Thimerosal was added as a preservative.
Concentration:	lot specific
Purification:	Purified by antigen-affinity chromatography.
Conjugation:	Unconjugated
Storage:	Store at -20°C as received.
Stability:	Stable for 12 months from date of receipt.
Predicted Protein Size:	29 kDa
Gene Name:	MAF1 homolog, negative regulator of RNA polymerase III
Database Link:	NP_115648 Entrez Gene 84232 Human Q9H063
Background:	This gene encodes a protein that is similar to Maf1, a <i>Saccharomyces cerevisiae</i> protein highly conserved in eukaryotic cells. Yeast Maf1 is a negative effector of RNA polymerase III (Pol III). It responds to changes in the cellular environment and represses pol III transcription. Biochemical studies identified the initiation factor TFIIIB as a target for Maf1-dependent repression. [provided by RefSeq]
Synonyms:	MGC20332; MGC31779; MGC39758
Protein Families:	Transcription Factors



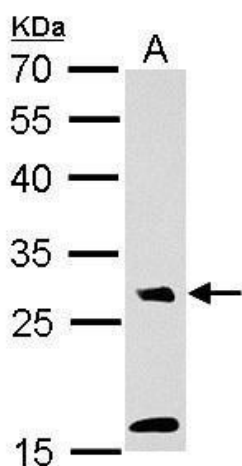
[View online »](#)

Product images:


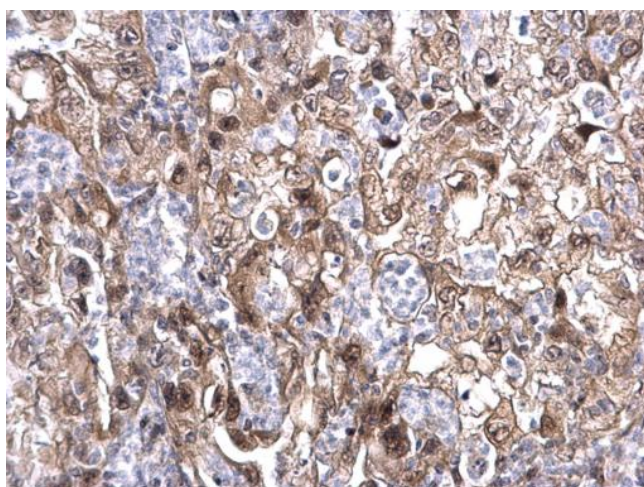
Sample (30 ug whole cell lysate). A:A431.
B:MOLT4. 12% SDS PAGE. TA307935 diluted at 1:1000



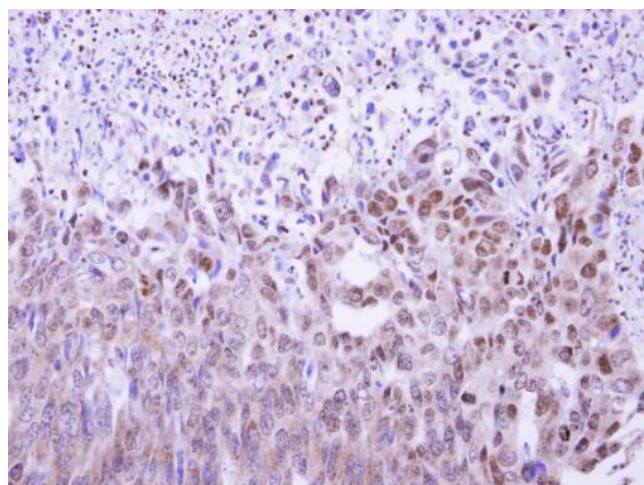
MAF1 antibody detects MAF1 protein by Western blot analysis. A. 30 ug GL261 whole cell lysate/extract. B. 30 ug BCL-1 whole cell lysate/extract. C. 30 ug Raw264.7 whole cell lysate/extract. 12 % SDS-PAGE. MAF1 antibody (TA307935) dilution: 1:1000



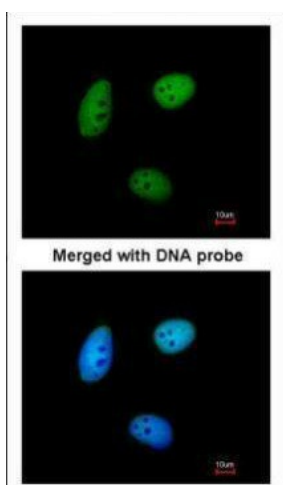
MAF1 antibody detects MAF1 protein by Western blot analysis. A. 30 ug PC-12 whole cell lysate/extract. 12 % SDS-PAGE. MAF1 antibody (TA307935) dilution: 1:1000



MAF1 antibody detects MAF1 protein at nucleus on human endometrial carcinoma by immunohistochemical analysis. Sample: Paraffin-embedded human endometrial carcinoma. MAF1 antibody (TA307935) dilution: 1:500.



MAF1 antibody detects MAF1 protein at nucleus and cytoplasm on colon carcinoma by immunohistochemical analysis. Sample: Paraffin-embedded colon carcinoma. MAF1 antibody (TA307935) dilution: 1:500.



Immunofluorescence analysis of paraformaldehyde-fixed HeLa, using MAF1 (TA307935) antibody at 1:200 dilution.