

Product datasheet for **TA307926**

INPP5F Rabbit Polyclonal Antibody

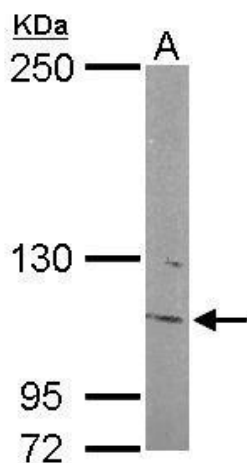
Product data:

Product Type:	Primary Antibodies
Applications:	IF, IHC, WB
Recommended Dilution:	ICC/IF:1:100-1:1000; IHC:1:100-1:1000; WB:1:500-1:3000
Reactivity:	Human, Mouse
Host:	Rabbit
Isotype:	IgG
Clonality:	Polyclonal
Immunogen:	Recombinant protein fragment contain a sequence corresponding to a region within amino acids 593 and 904 of INPP5F
Formulation:	0.1M Tris, 0.1M Glycine, 10% Glycerol (pH7). 0.01% Thimerosal was added as a preservative.
Purification:	Purified by antigen-affinity chromatography.
Conjugation:	Unconjugated
Storage:	Store at -20°C as received.
Stability:	Stable for 12 months from date of receipt.
Predicted Protein Size:	128 kDa
Gene Name:	inositol polyphosphate-5-phosphatase F
Database Link:	NP_055752 Entrez Gene 101490 Mouse Entrez Gene 22876 Human Q9Y2H2
Background:	The protein encoded by this gene is an inositol 1,4,5-trisphosphate (InsP3) 5-phosphatase and contains a Sac domain. The activity of this protein is specific for phosphatidylinositol 4,5-bisphosphate and phosphatidylinositol 3,4,5-trisphosphate. Alternatively spliced transcript variants have been observed, but most of them are not thought to be protein-coding. [provided by RefSeq]
Synonyms:	hSAC2; MSTP007; MSTPO47; SAC2
Protein Families:	Druggable Genome

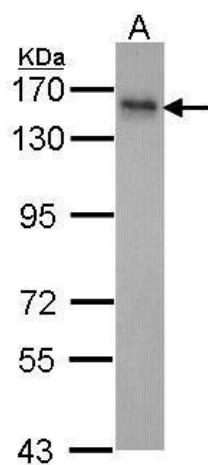


[View online »](#)

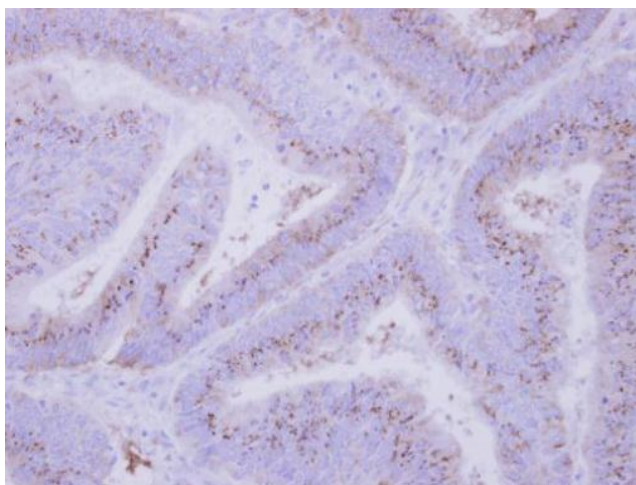
Product images:



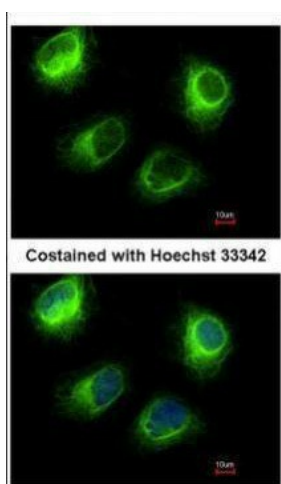
Sample (50 ug of whole cell lysate). A: mouse brain. 5% SDS PAGE. TA307926 diluted at 1:500.



Sample (30 ug of whole cell lysate). A: HeLa. 7.5% SDS PAGE. INPP5F antibody. TA307926 diluted at 1:1000.



Immunohistochemical analysis of paraffin-embedded Colon ca, using INPP5F (TA307926) antibody at 1:500 dilution.



Immunofluorescence analysis of methanol-fixed HeLa, using INPP5F (TA307926) antibody at 1:200 dilution.