

Product datasheet for **TA307925**

NANS Rabbit Polyclonal Antibody

Product data:

Product Type:	Primary Antibodies
Applications:	IHC, WB
Recommended Dilution:	IHC:1:100-1:1000; WB:1:500-1:3000
Reactivity:	Human (Predicted: Mouse, Chicken, Pig, Rat, Bovine)
Host:	Rabbit
Isotype:	IgG
Clonality:	Polyclonal
Immunogen:	Recombinant fragment corresponding to a region within amino acids 54 and 359 of NANS (Uniprot ID#Q9NR45)
Formulation:	0.1M Tris, 0.1M Glycine, 10% Glycerol (pH7). 0.01% Thimerosal was added as a preservative.
Concentration:	lot specific
Purification:	Purified by antigen-affinity chromatography.
Conjugation:	Unconjugated
Storage:	Store at -20°C as received.
Stability:	Stable for 12 months from date of receipt.
Predicted Protein Size:	40 kDa
Gene Name:	N-acetylneuraminase synthase
Database Link:	NP_061819 Entrez Gene 94181 Mouse Entrez Gene 298071 Rat Entrez Gene 54187 Human Q9NR45

Background: This gene encodes an enzyme that functions in the biosynthetic pathways of sialic acids. In vitro, the encoded protein uses N-acetylmannosamine 6-phosphate and mannose 6-phosphate as substrates to generate phosphorylated forms of N-acetylneuraminic acid (Neu5Ac) and 2-keto-3-deoxy-D-glycero-D-galacto-nononic acid (KDN), respectively; however, it exhibits much higher activity toward the Neu5Ac phosphate product. In insect cells, expression of this gene results in Neu5Ac and KDN production. This gene is related to the E. coli sialic acid synthase gene neuB, and it can partially restore sialic acid synthase activity in an E. coli neuB-negative mutant. [provided by RefSeq]



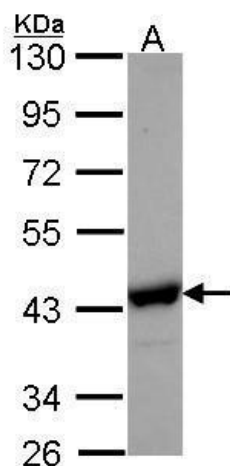
[View online »](#)

Synonyms: HEL-S-100; SAS

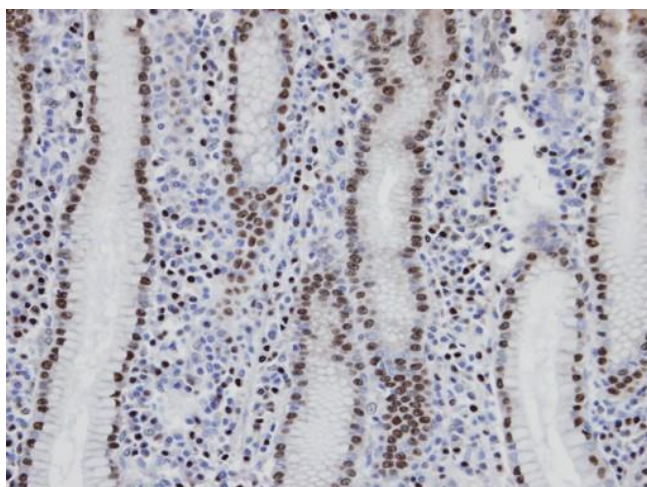
Note: Seq homology of immunogen across species: Mouse (97%), Chicken (88%), Pig (97%), Rat (97%), Bovine (97%)

Protein Pathways: Amino sugar and nucleotide sugar metabolism, Metabolic pathways

Product images:



Sample (30 ug of whole cell lysate). A: Hep G2. 10% SDS PAGE. NANS antibody. TA307925 diluted at 1:1000.



Immunohistochemical analysis of paraffin-embedded normal gastric epithelium (gland), using NANS (TA307925) antibody at 1:100 dilution.