

Product datasheet for **TA307922**

ALDH1A2 Rabbit Polyclonal Antibody

Product data:

Product Type:	Primary Antibodies
Applications:	WB
Recommended Dilution:	WB:1:1000-1:10000
Reactivity:	Human, Mouse (Predicted: Chicken, Rat, Xenopus, X. tropicalis)
Host:	Rabbit
Isotype:	IgG
Clonality:	Polyclonal
Immunogen:	Recombinant fragment corresponding to a region within amino acids 278 and 518 of ALDH1A2 (Uniprot ID#O94788)
Formulation:	1XPBS, 1% BSA, 20% Glycerol (pH7). 0.025% ProClin 300 was added as a preservative.
Purification:	Purified by antigen-affinity chromatography.
Conjugation:	Unconjugated
Storage:	Store at -20°C as received.
Stability:	Stable for 12 months from date of receipt.
Predicted Protein Size:	53 kDa
Gene Name:	aldehyde dehydrogenase 1 family member A2
Database Link:	NP_733798 Entrez Gene 19378 Mouse Entrez Gene 116676 Rat Entrez Gene 8854 Human O94788
Background:	This protein belongs to the aldehyde dehydrogenase family of proteins. The product of this gene is an enzyme that catalyzes the synthesis of retinoic acid (RA) from retinaldehyde. Retinoic acid, the active derivative of vitamin A (retinol), is a hormonal signaling molecule that functions in developing and adult tissues. The studies of a similar mouse gene suggest that this enzyme and the cytochrome CYP26A1, concurrently establish local embryonic retinoic acid levels which facilitate posterior organ development and prevent spina bifida. Three transcript variants encoding distinct isoforms have been identified for this gene. [provided by RefSeq]
Synonyms:	RALDH(II); RALDH2; RALDH2-T



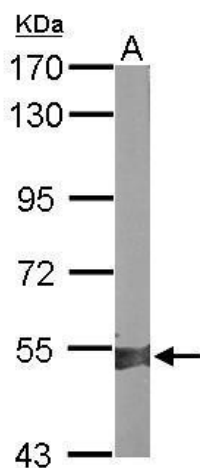
[View online »](#)

Note: Seq homology of immunogen across species: Chicken (98%), Rat (98%), Xenopus laevis (91%), Xenopus tropicalis (92%)

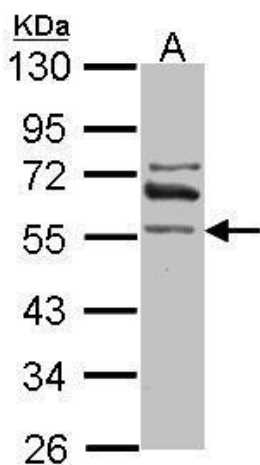
Protein Families: Druggable Genome

Protein Pathways: Metabolic pathways, Retinol metabolism

Product images:



Sample (50 ug of whole cell lysate). A: mouse liver. 7.5% SDS PAGE. TA307922 diluted at 1:10000.



Sample (30 ug of whole cell lysate). A: IMR32. 10% SDS PAGE. TA307922 diluted at 1:1000.