

Product datasheet for **TA307920**

LAD1 Rabbit Polyclonal Antibody

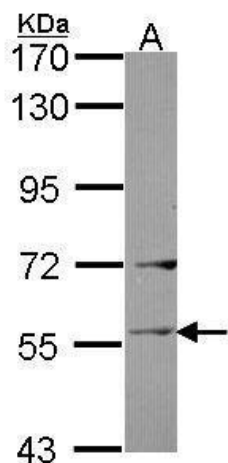
Product data:

| | |
|-------------------------|--|
| Product Type: | Primary Antibodies |
| Applications: | IF, IHC, WB |
| Recommended Dilution: | ICC/IF:1:100-1:1000; IHC:1:100-1:1000; WB:1:500-1:3000 |
| Reactivity: | Human |
| Host: | Rabbit |
| Isotype: | IgG |
| Clonality: | Polyclonal |
| Immunogen: | Recombinant fragment corresponding to a region within amino acids 300 and 517 of Ladinin 1 (Uniprot ID#O00515) |
| Formulation: | 0.1M Tris, 0.1M Glycine, 20% Glycerol (pH7). 0.01% Thimerosal was added as a preservative. |
| Concentration: | lot specific |
| Purification: | Purified by antigen-affinity chromatography. |
| Conjugation: | Unconjugated |
| Storage: | Store at -20°C as received. |
| Stability: | Stable for 12 months from date of receipt. |
| Predicted Protein Size: | 57 kDa |
| Gene Name: | ladinin 1 |
| Database Link: | NP_005549 Entrez Gene 3898 Human O00515 |
| Background: | The protein encoded by this gene may be an anchoring filament that is a component of basement membranes. It may contribute to the stability of the association of the epithelial layers with the underlying mesenchyme. [provided by RefSeq] |
| Synonyms: | LadA |
| Protein Families: | Secreted Protein |

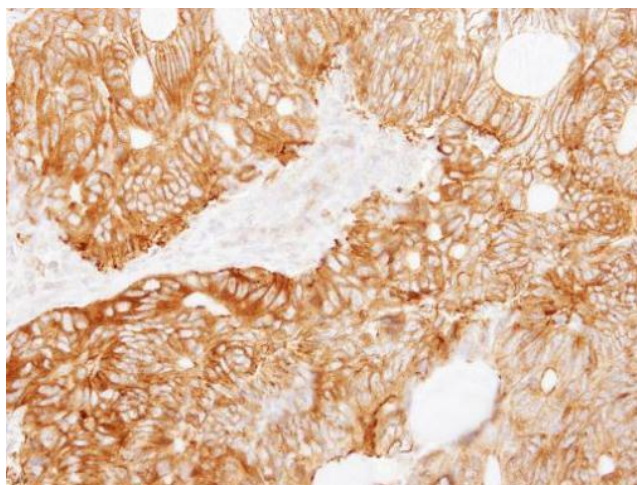


[View online »](#)

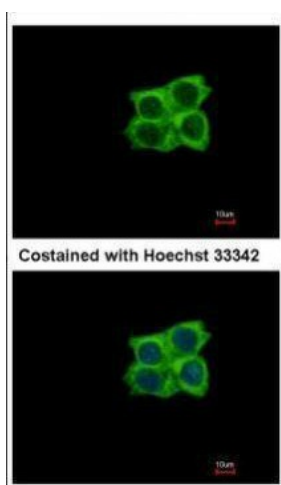
Product images:



Sample (30 ug of whole cell lysate). A: Raji. 7.5% SDS PAGE. TA307920 diluted at 1:1000.



Immunohistochemical analysis of paraffin-embedded Colon ca, using Ladinin 1 (TA307920) antibody at 1:250 dilution.



Immunofluorescence analysis of methanol-fixed A431, using Ladinin 1 (TA307920) antibody at 1:500 dilution.