

## Product datasheet for **TA307916**

### RRBP1 Rabbit Polyclonal Antibody

#### Product data:

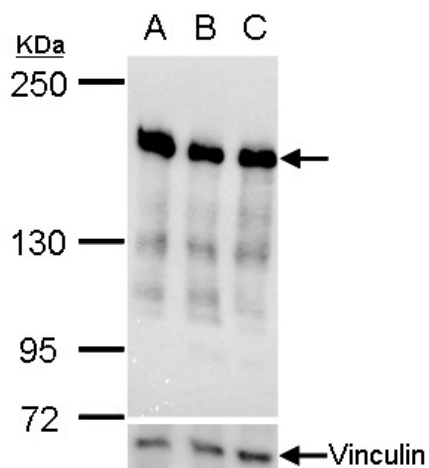
Product Type:	Primary Antibodies
Applications:	IF, IHC, WB
Recommended Dilution:	ICC/IF:1:100-1:1000; IHC:1:100-1:1000; WB:1:500-1:3000
Reactivity:	Human, Mouse (Predicted: Dog)
Host:	Rabbit
Isotype:	IgG
Clonality:	Polyclonal
Immunogen:	Recombinant fragment corresponding to a region within amino acids 1183 and 1410 of Ribosome binding protein 1 (Uniprot ID#Q9P2E9)
Formulation:	1XPBS, 40% Glycerol (pH7). 0.01% Thimerosal was added as a preservative.
Purification:	Purified by antigen-affinity chromatography.
Conjugation:	Unconjugated
Storage:	Store at -20°C as received.
Stability:	Stable for 12 months from date of receipt.
Predicted Protein Size:	109 kDa
Gene Name:	ribosome binding protein 1
Database Link:	<a href="#">NP_001036041</a> <a href="#">Entrez Gene 81910 Mouse</a> <a href="#">Entrez Gene 403809 Dog</a> <a href="#">Entrez Gene 6238 Human</a> <a href="#">Q9P2E9</a>
Background:	Analysis of cDNA clones indicates that ribosome binding protein 1 may exist in different forms due to removal of tandem repeats, or partial intraexonic splicing of RRBP1. The form presented here is lacking the canine p180 ribosome-binding domain, NQGKKAEGAQ, which is tandemly repeated close to the N-terminus in other forms that haven't been fully characterized. RRBP1 has been excluded as a candidate gene in the cause of Alagille syndrome. Alternate splicing results in multiple transcript variants. [provided by RefSeq]
Synonyms:	130; ES; ES130; hES; RRp
Note:	Seq homology of immunogen across species: Dog (83%)



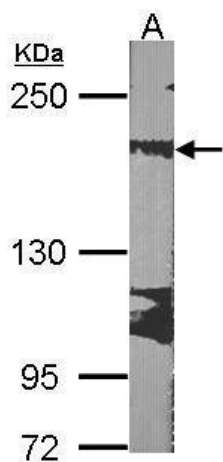
[View online »](#)

Protein Families: Druggable Genome, Transmembrane

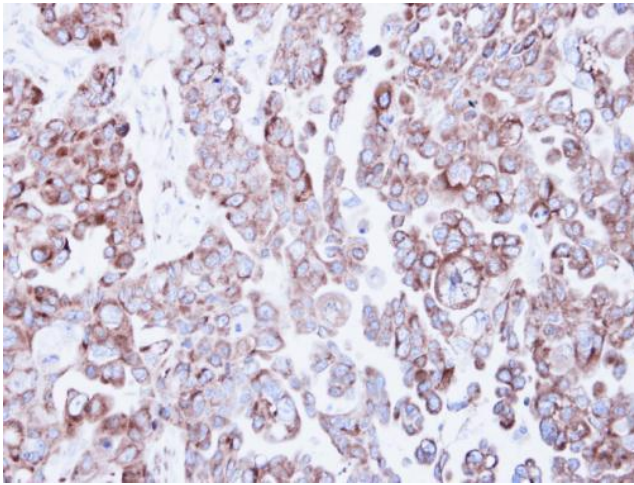
**Product images:**



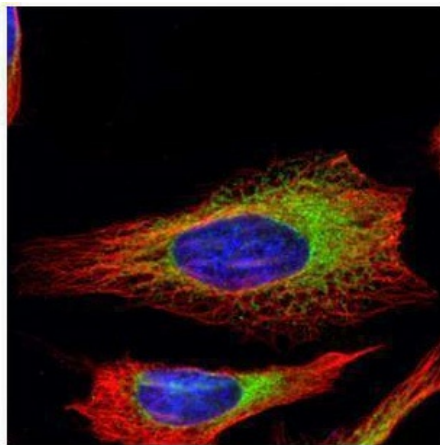
Ribosome binding protein 1 antibody validation by siRNA knock-down. Upperpanel: Ribosome binding protein 1 antibody TA307916. Lower panel: Vinculin antibody. A. 30 ug HepG2 whole cell lysate/extract. B. 30 ug whole cell lysate/extract of RRBP1 siRNA#1-tra



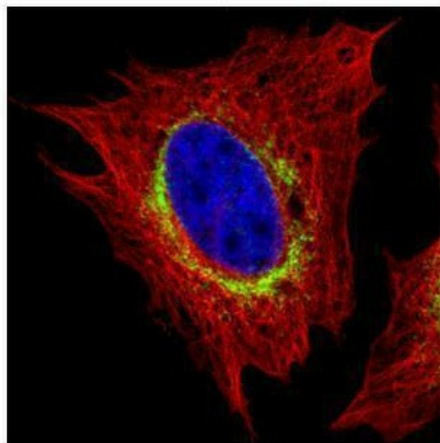
Sample (30 ug of whole cell lysate). A:NIH-3T3. 5% SDS PAGE. TA307916 diluted at 1:1000.



Immunohistochemical analysis of paraffin-embedded OVCAR3 xenograft, using Ribosome binding protein 1 (TA307916) antibody at 1:500 dilution.



Confocal immunofluorescence analysis (Olympus FV10i) of methanol-fixed HeLa, using Ribosome binding protein 1 (TA307916) antibody (Green) at 1:500 dilution. Alpha-tubulin filaments were labeled with anti-alpha tubulin antibody (Red) at 1:2500.



Confocal immunofluorescence analysis (Olympus FV10i) of paraformaldehyde-fixed HeLa, using Ribosome binding protein 1 (TA307916) antibody (Green) at 1:500 dilution. Alpha-tubulin filaments were labeled with anti-alpha tubulin antibody (Red) at 1:500.