

## Product datasheet for **TA307915**

### VPS16 Rabbit Polyclonal Antibody

#### Product data:

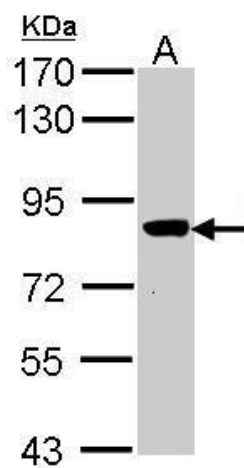
Product Type:	Primary Antibodies
Applications:	IHC, WB
Recommended Dilution:	IHC:1:100-1:1000; WB:1:500-1:3000
Reactivity:	Human (Predicted: Bovine, Rhesus Monkey)
Host:	Rabbit
Isotype:	IgG
Clonality:	Polyclonal
Immunogen:	Synthetic peptide corresponding to a region within amino acids 715 and 804 of VPS16
Formulation:	0.1M Tris, 0.1M Glycine, 10% Glycerol (pH7). 0.01% Thimerosal was added as a preservative.
Purification:	Purified by antigen-affinity chromatography.
Conjugation:	Unconjugated
Storage:	Store at -20°C as received.
Stability:	Stable for 12 months from date of receipt.
Predicted Protein Size:	95 kDa
Gene Name:	VPS16, CORVET/HOPS core subunit
Database Link:	<a href="#">NP_072097</a> <a href="#">Entrez Gene 64601 Human</a> <a href="#">Q9H269</a>
Background:	Vesicle mediated protein sorting plays an important role in segregation of intracellular molecules into distinct organelles. Genetic studies in yeast have identified more than 40 vacuolar protein sorting (VPS) genes involved in vesicle transport to vacuoles. This gene encodes the human homolog of yeast class C Vps16 protein. The mammalian class C Vps proteins are predominantly associated with late endosomes/lysosomes, and like their yeast counterparts, may mediate vesicle trafficking steps in the endosome/lysosome pathway. [provided by RefSeq]
Synonyms:	hVPS16
Note:	Seq homology of immunogen across species: Rhesus Monkey (100%), Bovine (100%)



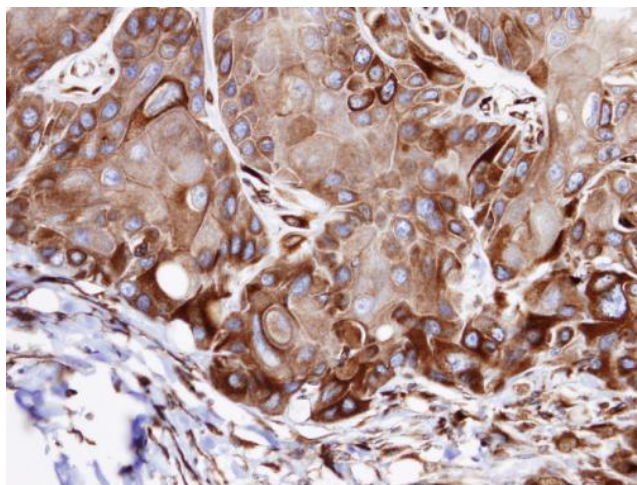
[View online »](#)

Protein Families: Druggable Genome

### Product images:



Sample (30 ug of whole cell lysate). A: Molt-4. 7.5% SDS PAGE. TA307915 diluted at 1:1000.



Immunohistochemical analysis of paraffin-embedded SCC15 xenograft, using VPS16 (TA307915) antibody at 1:100 dilution.