

## Product datasheet for **TA307913**

### SGSH Rabbit Polyclonal Antibody

#### Product data:

Product Type:	Primary Antibodies
Applications:	IHC, WB
Recommended Dilution:	IHC:1:100-1:1000; WB:1:1000-1:10000
Reactivity:	Human (Predicted: Mouse, Cow, Dog)
Host:	Rabbit
Isotype:	IgG
Clonality:	Polyclonal
Immunogen:	Recombinant fragment corresponding to a region within amino acids 318 and 496 of SGSH (Uniprot ID#P51688)
Formulation:	0.1M Tris, 0.1M Glycine, 10% Glycerol (pH7). 0.01% Thimerosal was added as a preservative.
Concentration:	lot specific
Purification:	Purified by antigen-affinity chromatography.
Conjugation:	Unconjugated
Storage:	Store at -20°C as received.
Stability:	Stable for 12 months from date of receipt.
Predicted Protein Size:	57 kDa
Gene Name:	N-sulfoglucosamine sulfohydrolase
Database Link:	<a href="#">NP_000190</a> <a href="#">Entrez Gene 27029 Mouse</a> <a href="#">Entrez Gene 403707 Dog</a> <a href="#">Entrez Gene 6448 Human</a> <a href="#">P51688</a>
Background:	This gene encodes one of several enzymes involved in the lysosomal degradation of heparan sulfate. Mutations in this gene are associated with Sanfilippo syndrome A, one type of the lysosomal storage disease mucopolysaccharidosis III, which results from impaired degradation of heparan sulfate. Transcripts of varying sizes have been reported but their biological validity has not been determined. [provided by RefSeq]
Synonyms:	HSS; MPS3A; SFMD
Note:	Seq homology of immunogen across species: mouse (81%), cow (81%), Dog (82%)

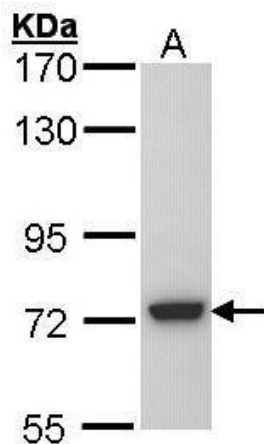


[View online »](#)

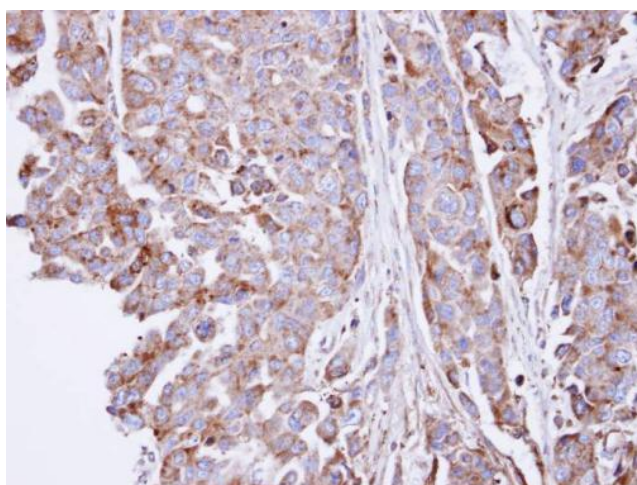
Protein Families: Druggable Genome

Protein Pathways: Glycosaminoglycan degradation, Lysosome, Metabolic pathways

**Product images:**



Sample (30 ug of whole cell lysate). A: Molt-4. 7.5% SDS PAGE. TA307913 diluted at 1:5000.



Immunohistochemical analysis of paraffin-embedded OVCAR3 xenograft, using SGSH (TA307913) antibody at 1:100 dilution.