

Product datasheet for **TA307908**

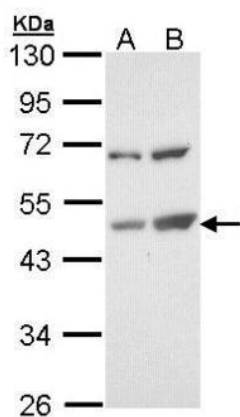
TSPYL1 Rabbit Polyclonal Antibody

Product data:

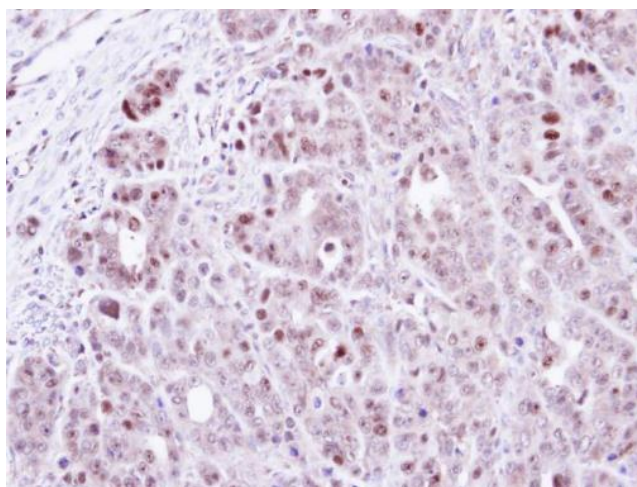
Product Type:	Primary Antibodies
Applications:	IF, IHC, WB
Recommended Dilution:	ICC/IF:1:100-1:1000; IHC:1:100-1:1000; WB:1:500-1:3000
Reactivity:	Human
Host:	Rabbit
Isotype:	IgG
Clonality:	Polyclonal
Immunogen:	Recombinant protein fragment contain a sequence corresponding to a region within amino acids 1 and 203 of TSPYL1
Formulation:	0.1M Tris, 0.1M Glycine, 10% Glycerol (pH7). 0.01% Thimerosal was added as a preservative.
Concentration:	lot specific
Purification:	Purified by antigen-affinity chromatography.
Conjugation:	Unconjugated
Storage:	Store at -20°C as received.
Stability:	Stable for 12 months from date of receipt.
Predicted Protein Size:	49 kDa
Gene Name:	TSPY-like 1
Database Link:	NP_003300 Entrez Gene 7259 Human Q9H0U9
Synonyms:	TSPYL



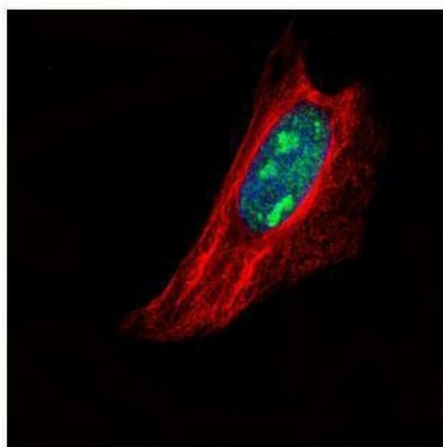
[View online »](#)

Product images:

Sample (30 ug of whole cell lysate). A: Molt-4. B: Raji. 10% SDS PAGE. TA307908 diluted at 1:1000.



Immunohistochemical analysis of paraffin-embedded NCIN87 Xenograft, using TSPYL1 (TA307908) antibody at 1:100 dilution.



Confocal immunofluorescence analysis (Olympus FV10i) of paraformaldehyde-fixed HeLa, using TSPYL1 (TA307908) antibody (Green) at 1:500 dilution. Alpha-tubulin filaments were labeled with anti-alpha tubulin antibody (Red) at 1:2500.