

Product datasheet for **TA307906**

NHP2L1 (SNU13) Rabbit Polyclonal Antibody

Product data:

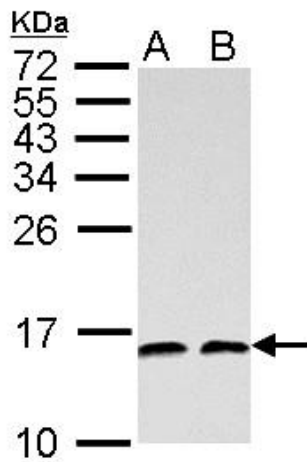
Product Type:	Primary Antibodies
Applications:	IF, IHC, WB
Recommended Dilution:	WB:1:500-1:3000
Reactivity:	Human (Predicted: Pig, Bovine)
Host:	Rabbit
Isotype:	IgG
Clonality:	Polyclonal
Immunogen:	Recombinant fragment corresponding to a region within amino acids 1 and 128 of NHP2-like protein 1 (Uniprot ID#P55769)
Formulation:	0.1M Tris, 0.1M Glycine, 10% Glycerol (pH7). 0.01% Thimerosal was added as a preservative.
Concentration:	lot specific
Purification:	Purified by antigen-affinity chromatography.
Conjugation:	Unconjugated
Storage:	Store at -20°C as received.
Stability:	Stable for 12 months from date of receipt.
Predicted Protein Size:	14 kDa
Gene Name:	SNU13 homolog, small nuclear ribonucleoprotein (U4/U6.U5)
Database Link:	NP_001003796 Entrez Gene 4809 Human P55769
Background:	Originally named because of its sequence similarity to the <i>Saccharomyces cerevisiae</i> NHP2 (non-histone protein 2), this protein appears to be a highly conserved nuclear protein that is a component of the [U4/U6.U5] tri-snRNP. It binds to the 5' stem-loop of U4 snRNA. Two transcript variants encoding the same protein have been found for this gene. [provided by RefSeq]
Synonyms:	15.5K; FA-1; FA1; NHPX; OTK27; SNRNP15-5; SNU13; SPAG12; SSFA1
Note:	Seq homology of immunogen across species: Pig (100%), Bovine (100%)



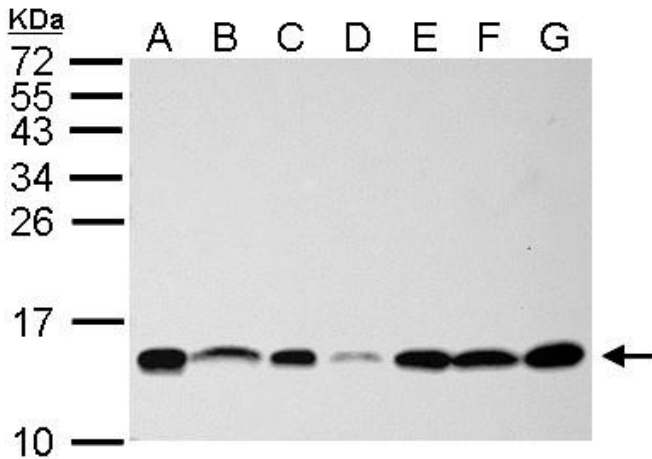
[View online »](#)

Protein Pathways: Spliceosome

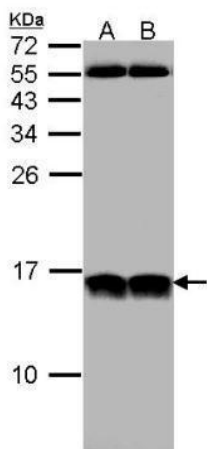
Product images:



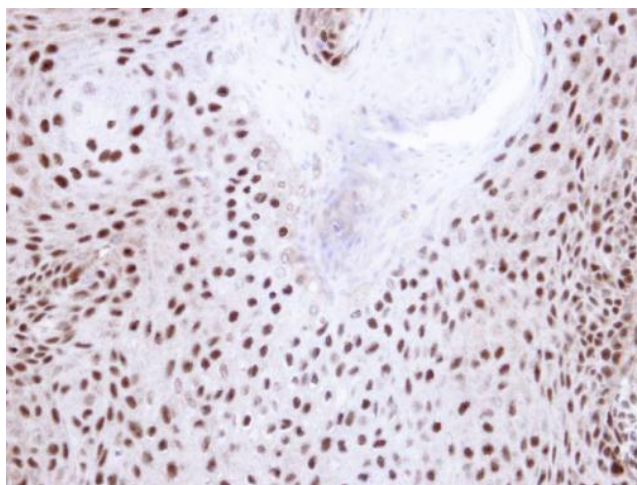
NHP2L1 antibody detects NHP2L1 protein by Western blot analysis. A. 30 ug PC-12 whole cell lysate/extract. B. 30 ug Rat2 whole cell lysate/extract. 15 % SDS-PAGE. NHP2L1 antibody (TA307906) dilution: 1:1000



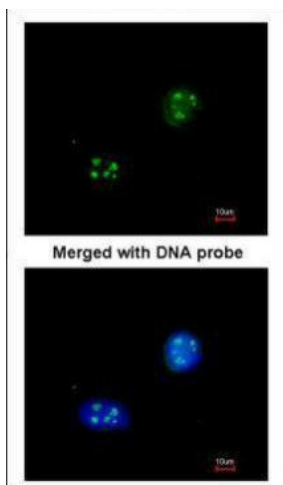
NHP2L1 antibody detects NHP2L1 protein by Western blot analysis. A. 30 ug Neuro2A whole cell lysate/extract. B. 30 ug GL261 whole cell lysate/extract. C. 30 ug C8D30 whole cell lysate/extract. D. 30 ug NIH-3T3 whole cell lysate/extract. E. 30 ug BCL-1 who



Sample (30 ug of whole cell lysate). A: HeLa. B: Hep G2. 12% SDS PAGE. TA307906 diluted at 1:1000



Immunohistochemical analysis of paraffin-embedded Cal27 xenograft, using NHP2-like protein 1 (TA307906) antibody at 1:100 dilution.



Immunofluorescence analysis of paraformaldehyde-fixed HeLa, using NHP2-like protein 1 (TA307906) antibody at 1:200 dilution.