

Product datasheet for **TA307902**

Aly (ALYREF) Rabbit Polyclonal Antibody

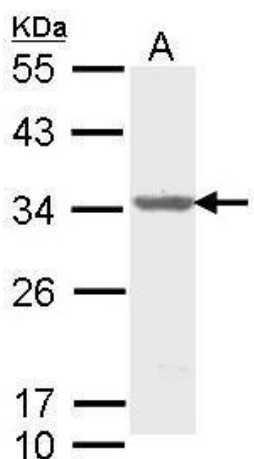
Product data:

Product Type:	Primary Antibodies
Applications:	IF, IHC, WB
Recommended Dilution:	ICC/IF:1:100-1:1000; IHC:1:100-1:1000; WB:1:500-1:3000
Reactivity:	Human, Mouse (Predicted: Bovine)
Host:	Rabbit
Isotype:	IgG
Clonality:	Polyclonal
Immunogen:	Recombinant fragment corresponding to a region within amino acids 1 and 233 of ALY (Uniprot ID#Q86V81)
Formulation:	0.1M Tris, 0.1M Glycine, 10% Glycerol (pH7). 0.01% Thimerosal was added as a preservative.
Concentration:	lot specific
Purification:	Purified by antigen-affinity chromatography.
Conjugation:	Unconjugated
Storage:	Store at -20°C as received.
Stability:	Stable for 12 months from date of receipt.
Predicted Protein Size:	27 kDa
Gene Name:	Aly/REF export factor
Database Link:	NP_005773 Entrez Gene 21681 Mouse Entrez Gene 10189 Human Q86V81
Background:	The protein encoded by this gene is a heat stable, nuclear protein and functions as a molecular chaperone. It is thought to regulate dimerization, DNA binding, and transcriptional activity of basic region-leucine zipper (bZIP) proteins. [provided by RefSeq]
Synonyms:	ALY; BEF; REF; THOC4
Note:	Seq homology of immunogen across species: Bovine (99%)
Protein Pathways:	Spliceosome

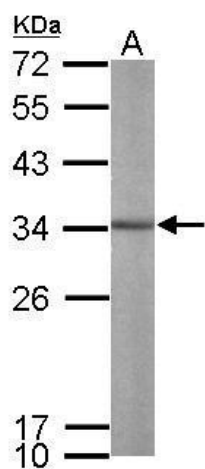


[View online »](#)

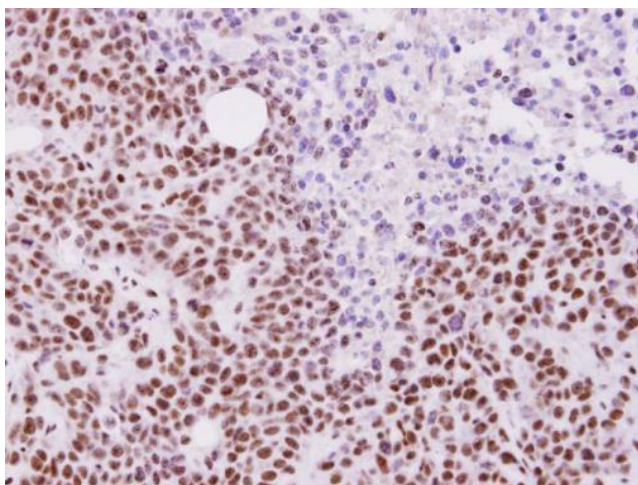
Product images:



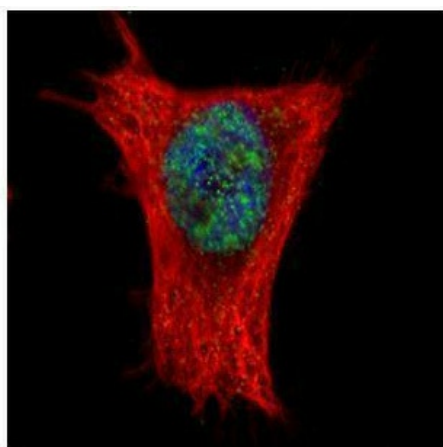
Sample (30 ug of whole cell lysate). A: Molt-4.
12% SDS PAGE. TA307902 diluted at 1:1000.



Sample (50 ug of whole cell lysate). A: mouse
brain. 12% SDS PAGE. TA307902 diluted at
1:1000.



Immunohistochemical analysis of paraffin-embedded SAS xenograft, using ALY (TA307902) antibody at 1:500 dilution.



Confocal immunofluorescence analysis (Olympus FV10i) of paraformaldehyde-fixed HeLa, using ALY (TA307902) antibody (Green) at 1:500 dilution. Alpha-tubulin filaments were labeled with anti-alpha tubulin antibody (Red) at 1:2000.