

Product datasheet for **TA307899**

DEC R1 Rabbit Polyclonal Antibody

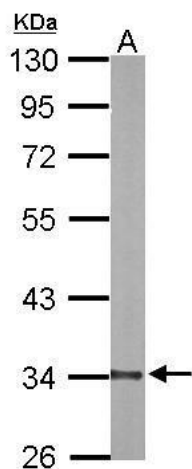
Product data:

Product Type:	Primary Antibodies
Applications:	IF, IHC, WB
Recommended Dilution:	ICC/IF:1:100-1:1000; IHC:1:100-1:1000; WB:1:5000-1:20000
Reactivity:	Human, Mouse (Predicted: Rat)
Host:	Rabbit
Isotype:	IgG
Clonality:	Polyclonal
Immunogen:	Recombinant fragment corresponding to a region within amino acids 1 and 335 of DEC R1 (Uniprot ID#Q16698)
Formulation:	0.1M Tris, 0.1M Glycine, 10% Glycerol (pH7). 0.01% Thimerosal was added as a preservative.
Concentration:	lot specific
Purification:	Purified by antigen-affinity chromatography.
Conjugation:	Unconjugated
Storage:	Store at -20°C as received.
Stability:	Stable for 12 months from date of receipt.
Predicted Protein Size:	36 kDa
Gene Name:	2,4-dienoyl-CoA reductase 1, mitochondrial
Database Link:	NP_001350 Entrez Gene 67460 Mouse Entrez Gene 117543 Rat Entrez Gene 1666 Human Q16698
Background:	This gene encodes an accessory enzyme which participates in the beta-oxidation and metabolism of unsaturated fatty enoyl-CoA esters. [provided by RefSeq]
Synonyms:	DEC R; NADPH; SDR18C1
Note:	Seq homology of immunogen across species: Rat (82%)
Protein Families:	Druggable Genome

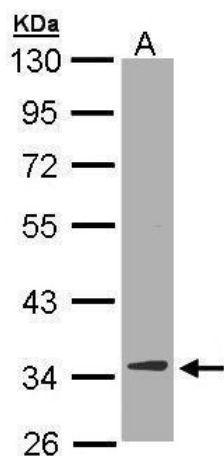


[View online »](#)

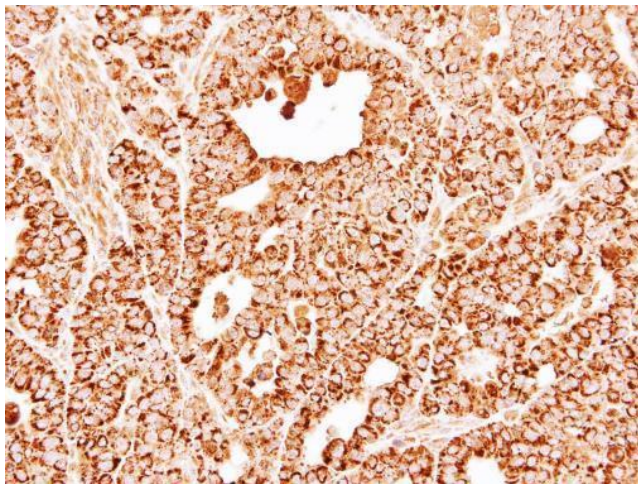
Product images:



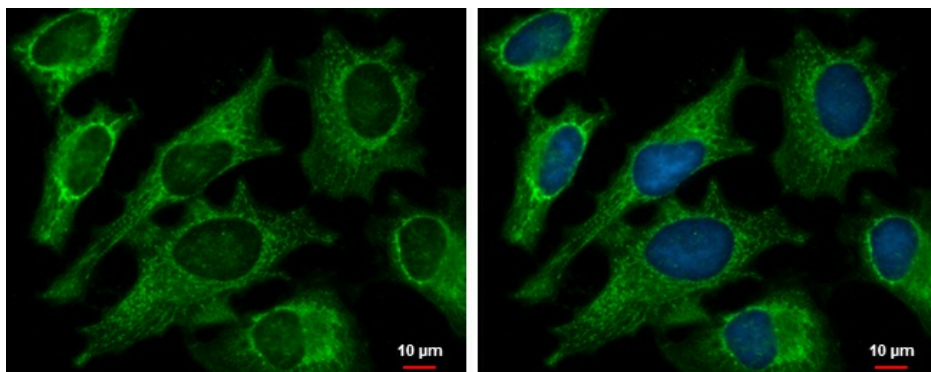
Sample (20 ug of whole cell lysate). A: mouse liver. 10% SDS PAGE. TA307899 diluted at 1:10000.



Sample (30 ug of whole cell lysate). A: Hep G2. 10% SDS PAGE. TA307899 diluted at 1:10000.



Immunohistochemical analysis of paraffin-embedded NCI-N87 xenograft, using DEC1 (TA307899) antibody at 1:500 dilution.



DEC1 antibody [N1C3] detects DEC1 protein at mitochondria by immunofluorescent analysis. Sample: HeLa cells were fixed in ice-cold MeOH for 5 min. Green: DEC1 protein stained by DEC1 antibody [N1C3] (TA307899) diluted at 1:500. Blue: Hoechst 33342 sta