

Product datasheet for **TA307898**

alpha Tubulin (TUBA1A) Rabbit Polyclonal Antibody

Product data:

Product Type:	Primary Antibodies
Applications:	IF, IHC, WB
Recommended Dilution:	ICC/IF:1:100-1:1000; IHC:1:100-1:1000; WB:1:500-1:20000
Reactivity:	Human, Drosophila, Rat, Mouse (Predicted: Chimpanzee, Bovine, Rhesus Monkey)
Host:	Rabbit
Isotype:	IgG
Clonality:	Polyclonal
Immunogen:	Recombinant protein fragment contain a sequence corresponding to a region within amino acids 37 and 276 of alpha Tubulin 1A
Formulation:	1XPBS, 1% BSA, 20% Glycerol (pH7). 0.025% ProClin 300 was added as a preservative.
Purification:	Purified by antigen-affinity chromatography.
Conjugation:	Unconjugated
Storage:	Store at -20°C as received.
Stability:	Stable for 12 months from date of receipt.
Predicted Protein Size:	50 kDa
Gene Name:	tubulin alpha 1a
Database Link:	NP_006000 Entrez Gene 22142 Mouse Entrez Gene 64158 Rat Entrez Gene 7846 Human Q71U36



[View online »](#)

Background:

Microtubules of the eukaryotic cytoskeleton perform essential and diverse functions and are composed of a heterodimer of alpha and beta tubulins. The genes encoding these microtubule constituents belong to the tubulin superfamily, which is composed of six distinct families. Genes from the alpha, beta and gamma tubulin families are found in all eukaryotes. The alpha and beta tubulins represent the major components of microtubules, while gamma tubulin plays a critical role in the nucleation of microtubule assembly. There are multiple alpha and beta tubulin genes, which are highly conserved among species. This gene encodes alpha tubulin and is highly similar to mouse and rat Tuba1 gene. Northern blotting studies have shown that the gene expression is predominantly found in morphologically differentiated neurologic cells. This gene is one of three alpha-tubulin genes in a cluster on chromosome 12q. [provided by RefSeq]

Synonyms:

B-ALPHA-1; LIS3; TUBA3

Note:

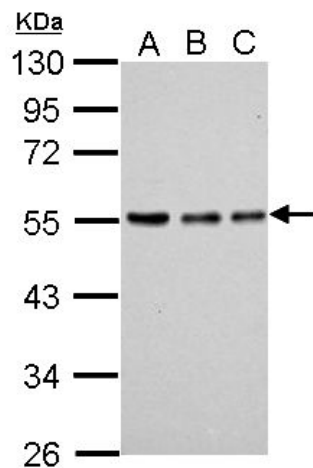
Seq homology of immunogen across species: Rhesus Monkey (100%), Chimpanzee (100%), Bovine (100%)

Protein Families:

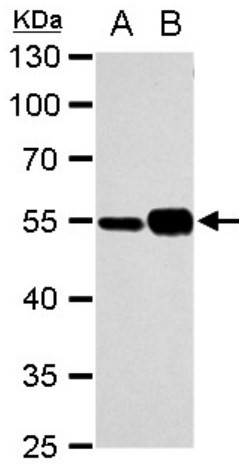
Druggable Genome

Protein Pathways:

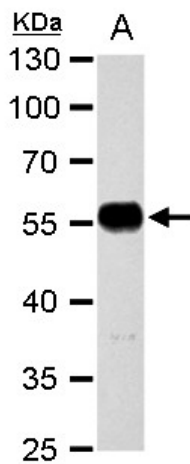
Gap junction, Pathogenic Escherichia coli infection

Product images:


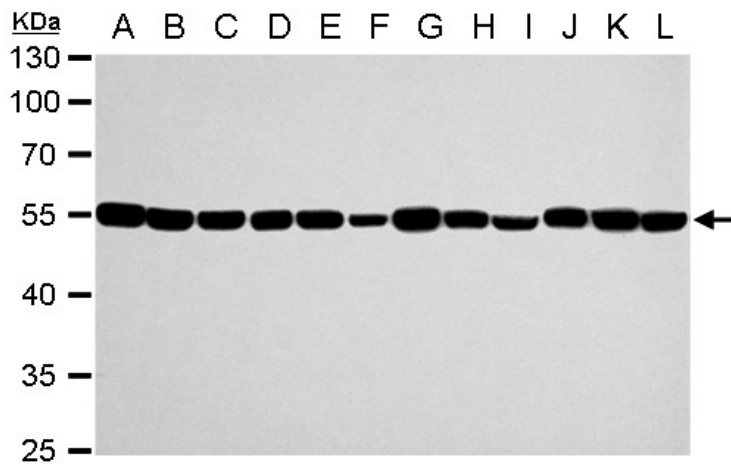
Sample (whole cell lysate). A: 293T 20ug. B: 293T 10ug. C: 293T 5ug. 10% SDS PAGE. TA307898 diluted at 1:10000.



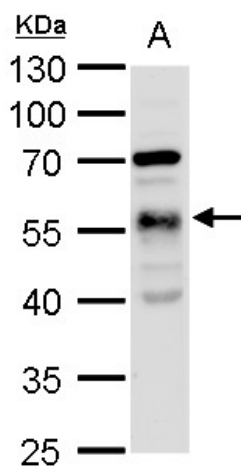
alpha Tubulin 1A antibody detects alpha Tubulin 1A protein by western blot analysis. A. 30 ug NIH-3T3 whole cell extract. B. 30 ug mouse brain extract. 10 % SDS-PAGE. alpha Tubulin 1A antibody (TA307898) dilution: 1:10000



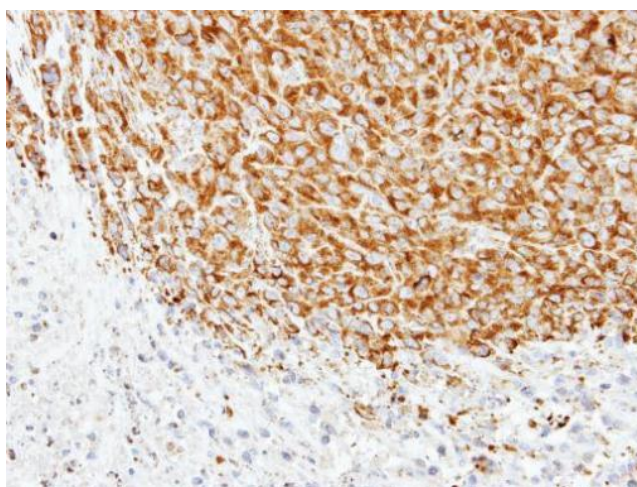
alpha Tubulin 1A antibody detects alpha Tubulin 1A protein by western blot analysis. A. 30 ug rat brain extract. 10 % SDS-PAGE. alpha Tubulin 1A antibody (TA307898) dilution: 1:10000



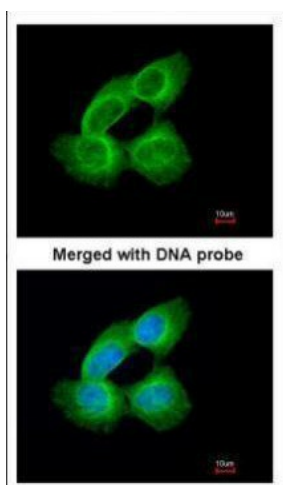
alpha Tubulin 1A antibody detects alpha Tubulin 1A protein by western blot analysis. A. 30 ug Jurkat whole cell extract. B. 30 ug Raji whole cell extract. C. 30 ug 293T whole cell extract. D. 30 ug A431 whole cell extract. E. 30 ug HeLa whole cell extract



alpha Tubulin 1A antibody detects alpha Tubulin 1A protein by western blot analysis. A. 30 ug drosophila lysate/extract. 10 % SDS-PAGE. alpha Tubulin 1A antibody (TA307898) dilution: 1:1000



Immunohistochemical analysis of paraffin-embedded SAS xenograft, using alpha Tubulin 1A (TA307898) antibody at 1:500 dilution.



Immunofluorescence analysis of paraformaldehyde-fixed A431, using Tubulin alpha 1A (TA307898) antibody at 1:200 dilution.