

Product datasheet for **TA307895**

CYFIP2 Rabbit Polyclonal Antibody

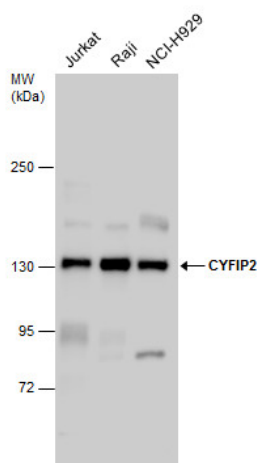
Product data:

Product Type:	Primary Antibodies
Applications:	WB
Reactivity:	Human, Mouse (Predicted: Bovine, Rhesus Monkey)
Host:	Rabbit
Isotype:	IgG
Clonality:	Polyclonal
Immunogen:	Recombinant protein fragment contain a sequence corresponding to a region within amino acids 346 and 600 of CYFIP2
Formulation:	1XPBS, 20% Glycerol (pH7). 0.01% Thimerosal was added as a preservative.
Concentration:	lot specific
Purification:	Purified by antigen-affinity chromatography.
Conjugation:	Unconjugated
Storage:	Store at -20°C as received.
Stability:	Stable for 12 months from date of receipt.
Predicted Protein Size:	146 kDa
Gene Name:	cytoplasmic FMR1 interacting protein 2
Database Link:	NP_001032410 Entrez Gene 76884 Mouse Entrez Gene 26999 Human Q96F07
Synonyms:	PIR121
Note:	Seq homology of immunogen across species: Rhesus Monkey (100%), Bovine (100%)
Protein Pathways:	Regulation of actin cytoskeleton



[View online »](#)

Product images:



CYFIP2 antibody detects CYFIP2 protein by western blot analysis. Various whole cell extracts (30 ug) were separated by 5% SDS-PAGE, and the membrane was blotted with CYFIP2 antibody (GTX110897) diluted at a dilution of 1:10000.