

Product datasheet for **TA307894**

RBMY1A1 Rabbit Polyclonal Antibody

Product data:

Product Type:	Primary Antibodies
Applications:	IHC, WB
Recommended Dilution:	IHC:1:100-1:1000; WB:1:500-1:3000
Reactivity:	Human
Host:	Rabbit
Isotype:	IgG
Clonality:	Polyclonal
Immunogen:	Recombinant fragment corresponding to a region within amino acids 253 and 496 of RBMY1A1 (Uniprot ID#Q15414)
Formulation:	0.1M Tris, 0.1M Glycine, 10% Glycerol (pH7). 0.01% Thimerosal was added as a preservative.
Concentration:	lot specific
Purification:	Purified by antigen-affinity chromatography.
Conjugation:	Unconjugated
Storage:	Store at -20°C as received.
Stability:	Stable for 12 months from date of receipt.
Predicted Protein Size:	56 kDa
Gene Name:	RNA binding motif protein, Y-linked, family 1, member A1
Database Link:	NP_005049 Entrez Gene 5940 Human P0DJD3

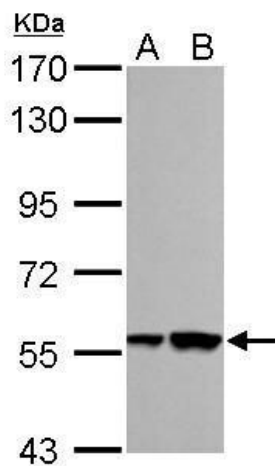
Background: This gene encodes a protein containing an RNA-binding motif in the N-terminus and four SRGY (serine, arginine, glycine, tyrosine) boxes in the C-terminus. Multiple copies of this gene are found in the AZFb azoospermia factor region of chromosome Y and the encoded protein is thought to be involved in spermatogenesis. Most copies of this locus are pseudogenes, although six highly similar copies have full-length ORFs and are considered functional. Four functional copies of this gene are found within inverted repeat IR2; two functional copies of this gene are found in palindrome P3, along with two copies of PTPN13-like, Y-linked. [provided by RefSeq]



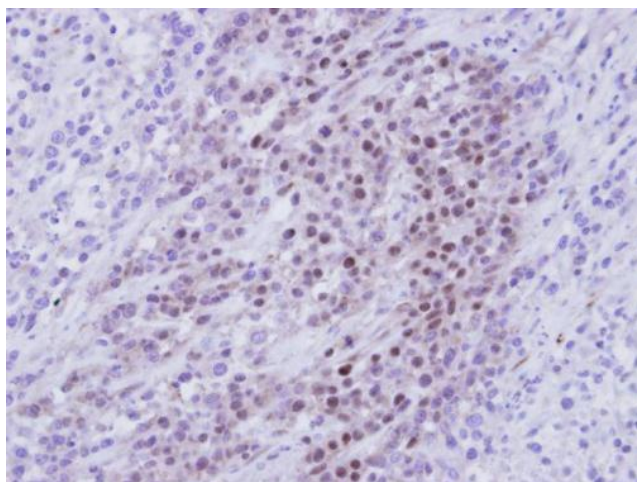
[View online »](#)

Synonyms: RBM; RBM1; RBM2; RBMY; RBMY1C; YRRM1; YRRM2

Product images:



RBMY1A1 antibody detects RBMY1A1 protein by Western blot analysis. A. 30 µg NT2D1 whole cell lysate/extract. B. 30 µg PC-3 whole cell lysate/extract. 7.5 % SDS-PAGE. RBMY1A1 antibody (TA307894) dilution: 1:1000



Immunohistochemical analysis of paraffin-embedded SAS Xenograft, using RBMY1A1 (TA307894) antibody at 1:100 dilution.