

Product datasheet for **TA307891**

CRTAP Rabbit Polyclonal Antibody

Product data:

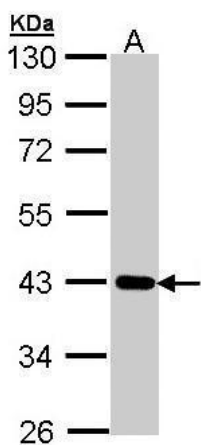
Product Type:	Primary Antibodies
Applications:	IF, WB
Recommended Dilution:	ICC/IF:1:100-1:1000; WB:1:500-1:3000
Reactivity:	Human (Predicted: Mouse, Bovine)
Host:	Rabbit
Isotype:	IgG
Clonality:	Polyclonal
Immunogen:	Recombinant fragment corresponding to a region within amino acids 122 and 363 of Cartilage-associated protein (Uniprot ID#O75718)
Formulation:	0.1M Tris, 0.1M Glycine, 10% Glycerol (pH7). 0.01% Thimerosal was added as a preservative.
Concentration:	lot specific
Purification:	Purified by antigen-affinity chromatography.
Conjugation:	Unconjugated
Storage:	Store at -20°C as received.
Stability:	Stable for 12 months from date of receipt.
Predicted Protein Size:	47 kDa
Gene Name:	cartilage associated protein
Database Link:	NP_006362 Entrez Gene 56693 Mouse Entrez Gene 10491 Human O75718
Background:	The protein encoded by this gene is similar to the chicken and mouse CRTAP genes. The encoded protein is a scaffolding protein that may influence the activity of at least one member of the cytohesin/ARNO family in response to specific cellular stimuli. Defects in this gene are associated with osteogenesis imperfecta, a connective tissue disorder characterized by bone fragility and low bone mass. [provided by RefSeq]
Synonyms:	CASP; LEPREL3; OI7; P3H5
Note:	Seq homology of immunogen across species: Mouse (94%), Bovine (97%)



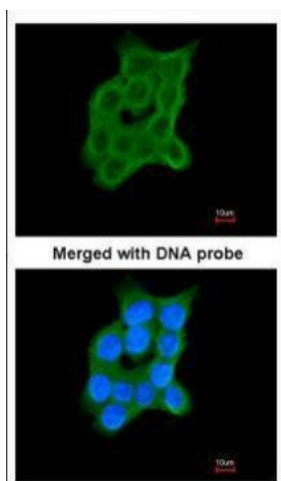
[View online »](#)

Protein Families: Secreted Protein, Transmembrane

Product images:



Sample (30 ug of whole cell lysate). A: A431. 10% SDS PAGE. TA307891 diluted at 1:1000



Immunofluorescence analysis of paraformaldehyde-fixed A431, using Cartilage-associated protein (TA307891) antibody at 1:200 dilution.