

## Product datasheet for **TA307888**

### BRCC45 (BRE) Rabbit Polyclonal Antibody

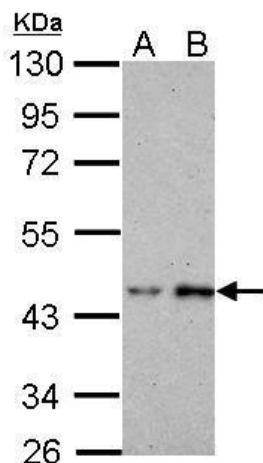
#### Product data:

Product Type:	Primary Antibodies
Applications:	IF, IHC, WB
Recommended Dilution:	ICC/IF:1:100-1:1000; IHC:1:100-1:1000; WB:1:500-1:3000
Reactivity:	Human, Mouse (Predicted: Bovine)
Host:	Rabbit
Isotype:	IgG
Clonality:	Polyclonal
Immunogen:	Recombinant protein fragment contain a sequence corresponding to a region within amino acids 51 and 229 of BRCC45
Formulation:	0.1M Tris, 0.1M Glycine, 10% Glycerol (pH7). 0.01% Thimerosal was added as a preservative.
Concentration:	lot specific
Purification:	Purified by antigen-affinity chromatography.
Conjugation:	Unconjugated
Storage:	Store at -20°C as received.
Stability:	Stable for 12 months from date of receipt.
Predicted Protein Size:	44 kDa
Gene Name:	brain and reproductive organ-expressed (TNFRSF1A modulator)
Database Link:	<a href="#">NP_954664</a> <a href="#">Entrez Gene 107976 Mouse</a> <a href="#">Entrez Gene 9577 Human</a> <a href="#">Q9NXR7</a>
Synonyms:	BRCC4; BRCC45
Note:	Seq homology of immunogen across species: Bovine (100%)
Protein Families:	Druggable Genome

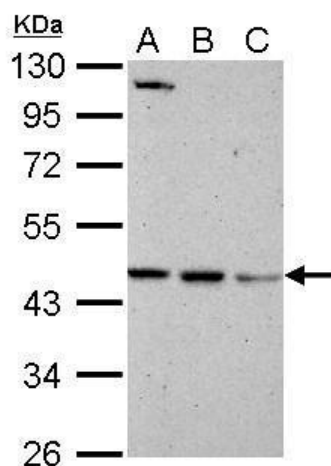


[View online »](#)

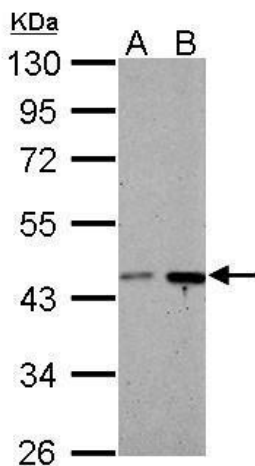
## Product images:



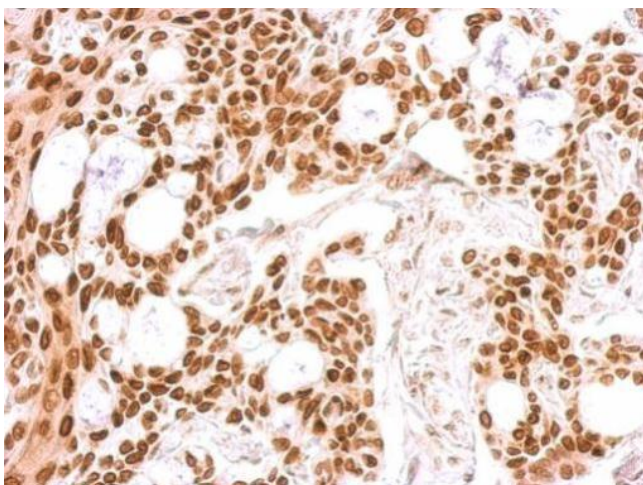
BRCC45 antibody detects BRE protein by Western blot analysis. A. 30 ug A431 whole cell lysate/extract. B. 30 ug HeLa whole cell lysate/extract. 10 % SDS-PAGE. BRCC45 antibody (TA307888) dilution: 1:1000



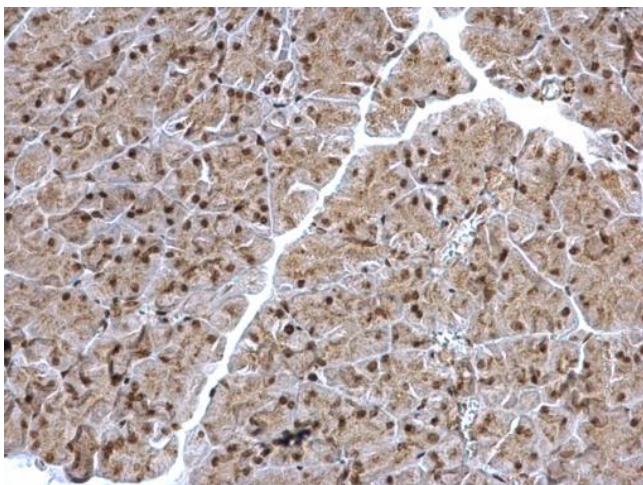
BRCC45 antibody detects BRE protein by Western blot analysis. A. 30 ug Neuro2A whole cell lysate/extract. B. 30 ug GL261 whole cell lysate/extract. C. 30 ug C8D30 whole cell lysate/extract. 10 % SDS-PAGE. BRCC45 antibody (TA307888) dilution: 1:1000



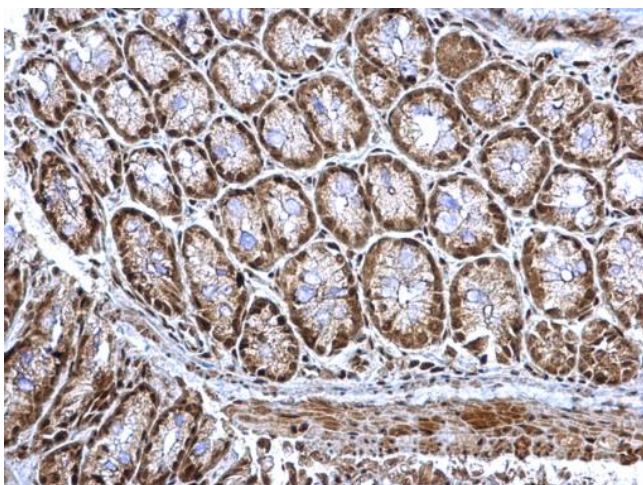
BRCC45 antibody detects BRE protein by Western blot analysis. A. 30 ug PC-12 whole cell lysate/extract. B. 30 ug Rat2 whole cell lysate/extract. 10 % SDS-PAGE. BRCC45 antibody (TA307888) dilution: 1:1000



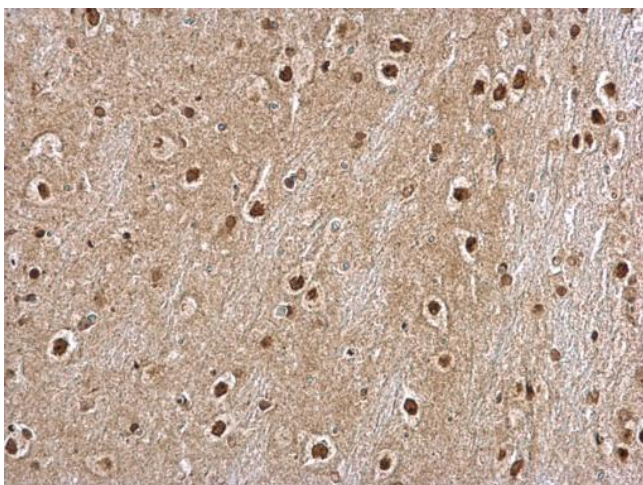
BRCC45 antibody detects BRE protein at nucleus on Cal27 xenograft by immunohistochemical analysis. Sample: Paraffin-embedded Cal27 xenograft. BRCC45 antibody (TA307888) dilution: 1:500.



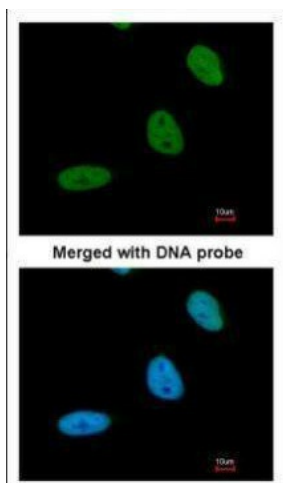
BRCC45 antibody detects BRCC45 protein at nucleus and cytosol on mouse pancreas by immunohistochemical analysis. Sample: Paraffin-embedded mouse pancreas. BRCC45 antibody (TA307888) dilution: 1:500.



BRCC45 antibody detects BRCC45 protein at nucleus and cytosol on mouse colon by immunohistochemical analysis. Sample: Paraffin-embedded mouse colon. BRCC45 antibody (TA307888) dilution: 1:500.



BRCC45 antibody detects BRCC45 protein at nucleus and cytosol on rat middle brain by immunohistochemical analysis. Sample: Paraffin-embedded rat middle brain. BRCC45 antibody (TA307888) dilution: 1:500.



Immunofluorescence analysis of paraformaldehyde-fixed HeLa, using BRE (TA307888) antibody at 1:200 dilution.