

Product datasheet for **TA307887**

BRCC45 (BRE) Rabbit Polyclonal Antibody

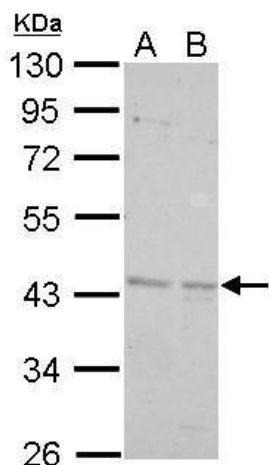
Product data:

Product Type:	Primary Antibodies
Applications:	IF, IP, WB
Recommended Dilution:	ICC/IF:1:100-1:1000; WB:1:500-1:3000
Reactivity:	Human, Mouse (Predicted: Bovine)
Host:	Rabbit
Isotype:	IgG
Clonality:	Polyclonal
Immunogen:	Recombinant protein fragment contain a sequence corresponding to a region within amino acids 9 and 328 of BRCC45
Formulation:	0.1M Tris, 0.1M Glycine, 10% Glycerol (pH7). 0.01% Thimerosal was added as a preservative.
Concentration:	lot specific
Purification:	Purified by antigen-affinity chromatography.
Conjugation:	Unconjugated
Storage:	Store at -20°C as received.
Stability:	Stable for 12 months from date of receipt.
Predicted Protein Size:	47 kDa
Gene Name:	brain and reproductive organ-expressed (TNFRSF1A modulator)
Database Link:	NP_954664 Entrez Gene 107976 Mouse Entrez Gene 9577 Human Q9NXR7
Synonyms:	BRCC4; BRCC45
Note:	Seq homology of immunogen across species: Bovine (100%)
Protein Families:	Druggable Genome

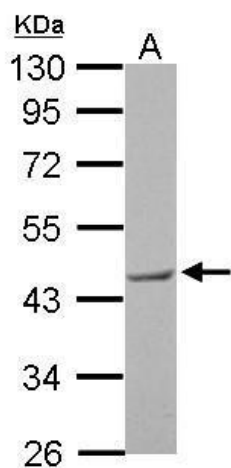


[View online »](#)

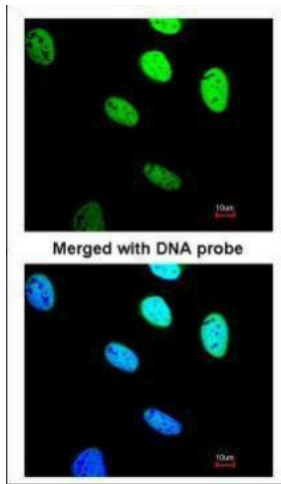
Product images:



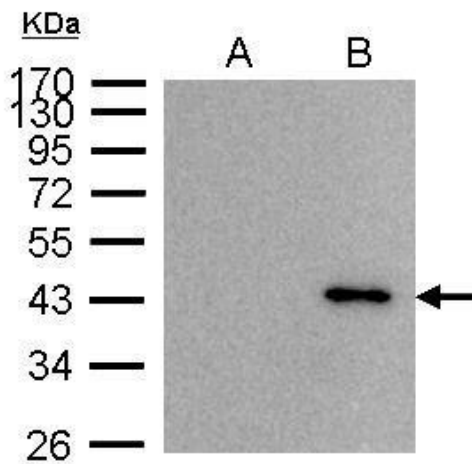
BRCC45 antibody detects BRE protein by Western blot analysis. A. 30 ug 293T whole cell lysate/extract. B. 30 ug A431 whole cell lysate/extract. 10 % SDS-PAGE. BRCC45 antibody (TA307887) dilution: 1:1000



BRCC45 antibody detects BRE protein by Western blot analysis. A. 30 ug C8D30 whole cell lysate/extract. 10 % SDS-PAGE. BRCC45 antibody (TA307887) dilution: 1:1000



Immunofluorescence analysis of paraformaldehyde-fixed HeLa, using BRE (TA307887) antibody at 1:200 dilution.



BRE antibody immunoprecipitates BRE protein in IP experiments. IP Sample: 1000 µg 293T whole cell lysate/extract A. Control with 2.5 µg of preimmune rabbit IgG B. Immunoprecipitation of BRE protein by 2.5 µg of BRE antibody (TA307887) 10% SDS-PAGE The imm