

Product datasheet for **TA307886**

DDX3Y Rabbit Polyclonal Antibody

Product data:

Product Type:	Primary Antibodies
Applications:	IF, WB
Recommended Dilution:	ICC/IF:1:100-1:1000; WB:1:1000-1:10000
Reactivity:	Human, Mouse
Host:	Rabbit
Isotype:	IgG
Clonality:	Polyclonal
Immunogen:	Recombinant fragment corresponding to a region within amino acids 70 and 346 of DDX3 (Uniprot ID#O15523)
Formulation:	0.1M Tris, 0.1M Glycine, 10% Glycerol (pH7). 0.01% Thimerosal was added as a preservative.
Concentration:	lot specific
Purification:	Purified by antigen-affinity chromatography.
Conjugation:	Unconjugated
Storage:	Store at -20°C as received.
Stability:	Stable for 12 months from date of receipt.
Predicted Protein Size:	73 kDa
Gene Name:	DEAD-box helicase 3, Y-linked
Database Link:	NP_001116137 Entrez Gene 26900 Mouse Entrez Gene 8653 Human O15523



[View online »](#)

Background:

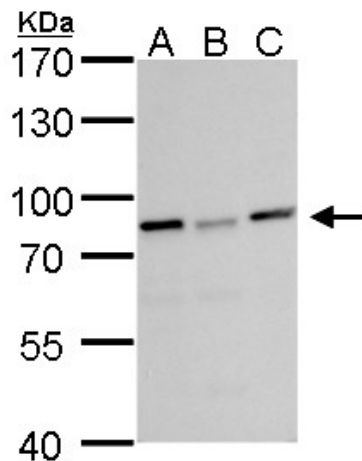
DEAD box proteins, characterized by the conserved motif Asp-Glu-Ala-Asp (DEAD), are putative RNA helicases. They are implicated in a number of cellular processes involving alteration of RNA secondary structure such as translation initiation, nuclear and mitochondrial splicing, and ribosome and spliceosome assembly. Based on their distribution patterns, some members of this family are believed to be involved in embryogenesis, spermatogenesis, and cellular growth and division. This gene encodes a DEAD box protein, and it has a homolog on the X chromosome. The gene mutation causes male infertility, Sertoli cell-only syndrome or severe hypospermatogenesis, suggesting that this gene plays a key role in the spermatogenic process. Alternatively spliced variants, encoding the same protein, have been identified. [provided by RefSeq]

Synonyms:

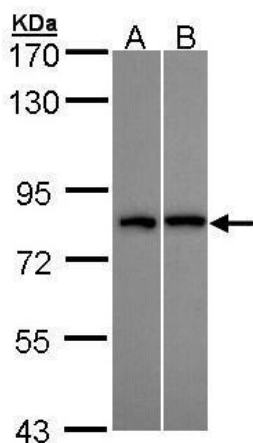
DBY

Protein Pathways:

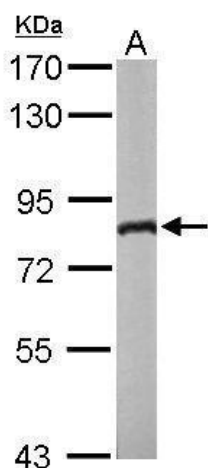
RIG-I-like receptor signaling pathway

Product images:

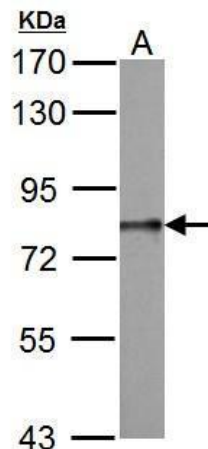
DDX3 antibody detects DDX3 protein by Western blot analysis. A. 30 ug Jurkat. B. 30 ug Raji. C. 30 ug NCI-H929. 7.5 % SDS-PAGE. DDX3 antibody (TA307886) dilution: 1:10000



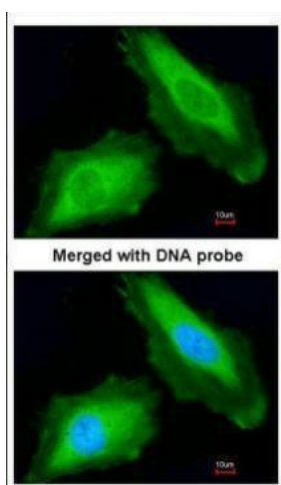
Sample (30 ug of whole cell lysate). A: H1299. B: Hep G2. 7.5% SDS PAGE. TA307886 diluted at 1:10000



Sample (50 ug of whole cell lysate). A: Mouse brain. 7.5% SDS PAGE. TA307886 diluted at 1:1000.



DDX3 antibody detects DDX3Y protein by Western blot analysis. A. 50 ug Rat testis lysate/extract. 7.5 % SDS-PAGE. DDX3 antibody (TA307886) dilution: 1:1000



Immunofluorescence analysis of paraformaldehyde-fixed HeLa, using DDX3Y (TA307886) antibody at 1:200 dilution.