

## Product datasheet for **TA307885**

### XPNPEP3 Rabbit Polyclonal Antibody

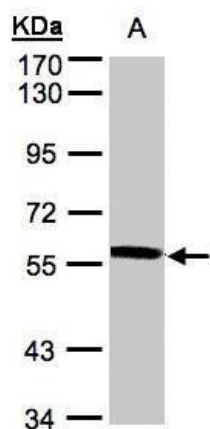
#### Product data:

Product Type:	Primary Antibodies
Applications:	IF, WB
Recommended Dilution:	ICC/IF:1:100-1:1000; WB:1:500-1:3000
Reactivity:	Human (Predicted: Rat, Bovine)
Host:	Rabbit
Isotype:	IgG
Clonality:	Polyclonal
Immunogen:	Recombinant fragment corresponding to a region within amino acids 12 and 507 of XPNPEP3 (Uniprot ID#Q9NQH7)
Formulation:	0.1M Tris, 0.1M Glycine, 10% Glycerol (pH7). 0.01% Thimerosal was added as a preservative.
Concentration:	lot specific
Purification:	Purified by antigen-affinity chromatography.
Conjugation:	Unconjugated
Storage:	Store at -20°C as received.
Stability:	Stable for 12 months from date of receipt.
Predicted Protein Size:	57 kDa
Gene Name:	X-prolyl aminopeptidase 3, mitochondrial
Database Link:	<a href="#">NP_071381</a> <a href="#">Entrez Gene 685823 Rat</a> <a href="#">Entrez Gene 63929 Human</a> <a href="#">Q9NQH7</a>
Synonyms:	APP3; ICP55; NPHPL1
Note:	Seq homology of immunogen across species: Rat (90%), Bovine (90%)
Protein Families:	Druggable Genome, Protease

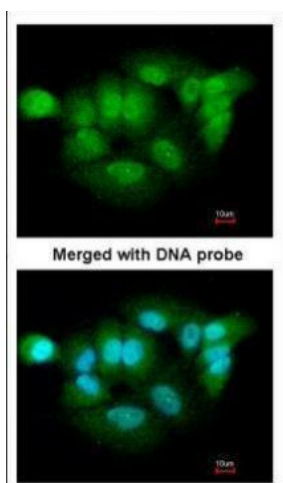


[View online »](#)

## Product images:



Sample (30 ug whole cell lysate). A:A431. 7.5% SDS PAGE. TA307885 diluted at 1:500



Immunofluorescence analysis of paraformaldehyde-fixed A549, using XPNPEP3 (TA307885) antibody at 1:200 dilution.