

Product datasheet for **TA307883**

c-Myc (MYC) Rabbit Polyclonal Antibody

Product data:

Product Type:	Primary Antibodies
Applications:	FC, IF, WB
Recommended Dilution:	FACS:1:50-1:200; ICC/IF:1:100-1:1000; WB:1:500-1:3000
Reactivity:	Human, Mouse (Predicted: Rat, Dog, Feline, Pig, Sheep, Chimpanzee, Bovine, Rhesus Monkey)
Host:	Rabbit
Isotype:	IgG
Clonality:	Polyclonal
Immunogen:	Synthetic peptide corresponding to a region within amino acids 1 and 52 of c-Myc (Uniprot ID#P01106)
Formulation:	1XPBS, 20% Glycerol (pH7). 0.025% ProClin 300 was added as a preservative.
Concentration:	lot specific
Conjugation:	Unconjugated
Storage:	Store at -20°C as received.
Stability:	Stable for 12 months from date of receipt.
Predicted Protein Size:	51 kDa
Gene Name:	v-myc avian myelocytomatosis viral oncogene homolog
Database Link:	NP_002458 Entrez Gene 17869 Mouse Entrez Gene 24577 Rat Entrez Gene 403924 Dog Entrez Gene 4609 Human P01106
Synonyms:	bHLHe39; c-Myc; MRTL; MYCC
Note:	Seq homology of immunogen across species: Rat (100%), Dog (100%), Cat (100%), Pig (100%), Sheep (100%), Rhesus Monkey (100%), Chimpanzee (100%), Bovine (93%)
Protein Families:	Druggable Genome, Embryonic stem cells, Induced pluripotent stem cells, Stem cell - Pluripotency, Stem cell relevant signaling - JAK/STAT signaling pathway, Stem cell relevant signaling - TGFb/BMP signaling pathway, Stem cell relevant signaling - Wnt Signaling pathway, Transcription Factors

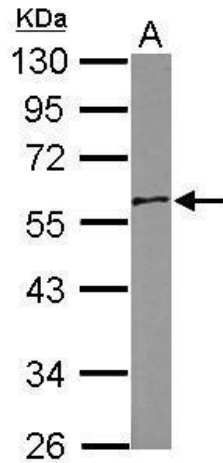


[View online »](#)

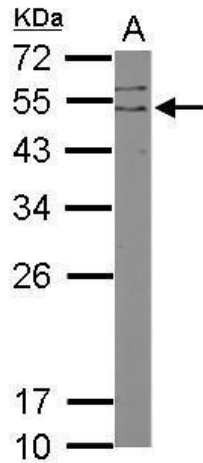
Protein Pathways:

Acute myeloid leukemia, Bladder cancer, Cell cycle, Chronic myeloid leukemia, Colorectal cancer, Endometrial cancer, ErbB signaling pathway, Jak-STAT signaling pathway, MAPK signaling pathway, Pathways in cancer, Small cell lung cancer, TGF-beta signaling pathway, Thyroid cancer, Wnt signaling pathway

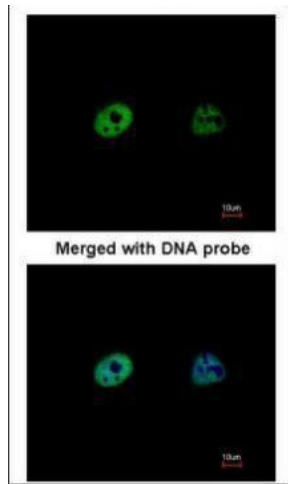
Product images:



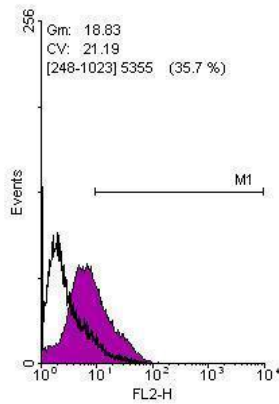
Sample (20 ug of whole cell lysate). A: human ESC. 10% SDS PAGE. TA307883 diluted at 1:1000.



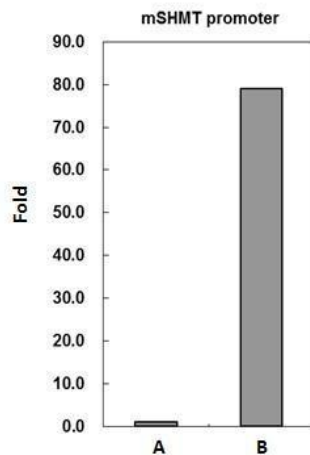
Sample (20 ug of whole cell lysate). A: mouse ESC. 12% SDS PAGE. TA307883 diluted at 1:3000.



Immunofluorescence analysis of paraformaldehyde-fixed HeLa, using c-Myc (TA307883) antibody at 1:200 dilution.



Flow cytometry on human embryonic stem cells, staining with c-Myc (TA307883) antibody at 1:100 dilution (purple) or rabbit IgG (black).



MYC antibody immunoprecipitates MYC protein-DNA complex in ChIP experiments. ChIP Sample: 293T whole cell lysate/extract A. 5 µg preimmune rabbit IgG. B. 5 µg of MYC antibody (TA307883). The precipitated DNA was detected by PCR with primer set targeting t