

## Product datasheet for **TA307880**

### Laminin beta 1 (LAMB1) Rabbit Monoclonal Antibody [Clone ID: EPR3190(2)]

#### Product data:

Product Type:	Primary Antibodies
Clone Name:	EPR3190(2)
Applications:	FC, WB
Recommended Dilution:	WB: 1:1000 - 1:10000; FC: 1:100 - 1:500
Reactivity:	Mouse, Rat, Human
Host:	Rabbit
Isotype:	IgG
Clonality:	Monoclonal
Immunogen:	A synthetic peptide corresponding to residues in human Laminin Beta 1 was used as an immunogen.
Formulation:	PBS 49%, Sodium azide 0.01%, Glycerol 50%, BSA 0.05%
Purification:	Tissue culture supernatant
Conjugation:	Unconjugated
Storage:	Store at -20°C as received.
Stability:	Stable for 12 months from date of receipt.
Predicted Protein Size:	198 kDa
Gene Name:	laminin subunit beta 1
Database Link:	<a href="#">NP_002282</a> <a href="#">Entrez Gene 16777 Mouse</a> <a href="#">Entrez Gene 298941 Rat</a> <a href="#">Entrez Gene 3912 Human</a> <a href="#">P07942</a>



[View online »](#)

**Background:**

Laminins, a family of extracellular matrix glycoproteins, are the major noncollagenous constituent of basement membranes. They have been implicated in a wide variety of biological processes including cell adhesion, differentiation, migration, signaling, neurite outgrowth and metastasis. Laminins are composed of 3 non identical chains: laminin alpha, beta and gamma (formerly A, B1, and B2, respectively) and they form a cruciform structure consisting of 3 short arms, each formed by a different chain, and a long arm composed of all 3 chains. Each laminin chain is a multidomain protein. Different alpha, beta and gamma chain isomers combine to give rise to different heterotrimeric laminin isoforms, which are designated by Arabic numerals in the order of their discovery, i.e. alpha1beta1gamma1 heterotrimer is laminin 1. Some of the chains have been shown to differ with respect to their tissue distribution, presumably reflecting diverse functions in vivo. The beta chain isoform, laminin beta 1, has 7 structurally distinct domains that it shares with other beta chain isomers. The C-terminal helical region containing domains I and II are separated by domain alpha, domains III and V contain several EGF-like repeats, and domains IV and VI have a globular conformation. Laminin beta 1 is expressed in most tissues that produce basement membranes, and is one of the 3 chains constituting laminin 1, the first laminin isolated from Engelbreth-Holm-Swarm (EHS) tumor. It is involved in cell attachment and chemotaxis; binding to the laminin receptor was identified and shown to have the capacity to inhibit metastasis.

**Synonyms:**

CLM; LIS5

**Note:**

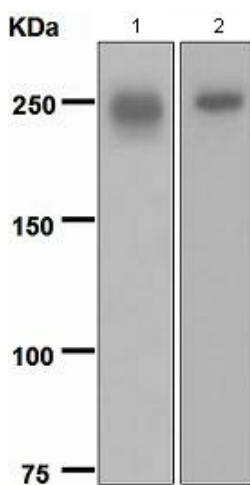
Is unsuitable for ICC,IHC-P or IP.

**Protein Families:**

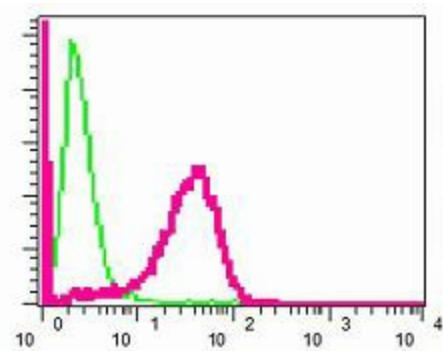
Druggable Genome, Secreted Protein

**Protein Pathways:**

ECM-receptor interaction, Focal adhesion, Pathways in cancer, Small cell lung cancer

**Product images:**

Western blot - Laminin beta 1 antibody [EPR3190 (2)]; All lanes : Anti-Laminin beta 1 antibody [EPR3190 (2)] at 1/1000 dilution.Lane 1 : Human fetal kidney lysate.Lane 2 : A431 lysate.Lysates/proteins at 10 ug per lane.Predicted band size : 198 kDa.



Flow Cytometry - Laminin beta 1 antibody [EPR3190 (2)]; Flow cytometric analysis of permeabilized A431 cells using TA307880 (red) at a dilution of 1/100 or a rabbit IgG (negative) (green).