

## Product datasheet for **TA307874**

### Ferritin Light Chain (FTL) Rabbit Monoclonal Antibody [Clone ID: EPR5260]

#### Product data:

Product Type:	Primary Antibodies
Clone Name:	EPR5260
Applications:	FC, WB
Recommended Dilution:	WB: 1:10000 - 1:50000; IP: 1:10 - 1:100; FC: 1:100 - 1:500
Reactivity:	Mouse, Rat, Human
Host:	Rabbit
Isotype:	IgG
Clonality:	Monoclonal
Immunogen:	A synthetic peptide corresponding to residues on the C-terminus in human Ferritin was used as an immunogen. This antibody recognizes the light chain only.
Formulation:	PBS 49%, Sodium azide 0.01%, Glycerol 50%, BSA 0.05%
Purification:	Tissue culture supernatant
Conjugation:	Unconjugated
Storage:	Store at -20°C as received.
Stability:	Stable for 12 months from date of receipt.
Predicted Protein Size:	20 kDa
Gene Name:	ferritin, light polypeptide
Database Link:	<a href="#">NP_000137</a> <a href="#">Entrez Gene 2512 Human</a> <a href="#">P02792</a>

**Background:** Ferritin is important in iron homeostasis. It is the main iron-storage protein, composed of two partially homologous subunits, heavy and light chains. Ferritin molecules in cells containing high levels of iron tend to be rich in light chains and may have a long-term storage function, whereas heavy-rich ferritins are more active in iron metabolism (1, 2). Mutations in ferritin cause hereditary hyperferritinemia-cataract syndrome and neuroferritinopathy, associated with inflammation. Elevated levels of ferritin are reported as characteristics of adult-onset Still's disease and hemophagocytic syndrome, also associated with inflammation (3).



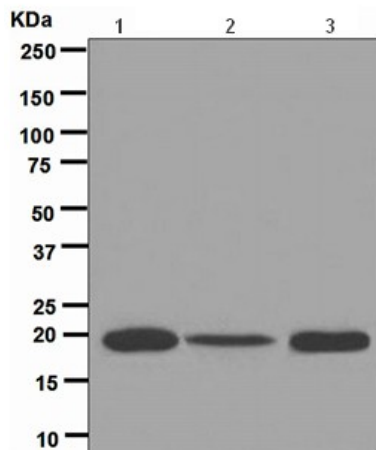
[View online »](#)

**Synonyms:** LFTD; NBIA3

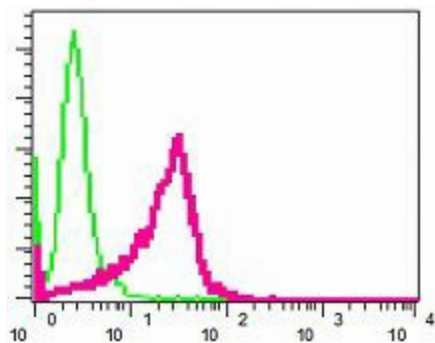
**Note:** Is unsuitable for ICC or IHC-P.

**Protein Families:** Druggable Genome

**Product images:**



Western blot - Ferritin Light Chain antibody [EPR5260]; All lanes : Anti-Ferritin Light Chain antibody [EPR5260] at 1/10000 dilution. Lane 1 : Fetal liver lysate. Lane 2 : HepG2 cell lysate. Lane 3 : HeLa cell lysate. Lysates/proteins at 10 ug per lane. Predicted band size : 20 kDa. Observed band size : 19 kDa.



Flow Cytometry - Ferritin Light Chain antibody [EPR5260]; Flow cytometric analysis of permeabilized HeLa cells using TA307874 at a dilution of 1/100 (red) or a rabbit IgG (negative) (green).