

Product datasheet for **TA307855**

FANCD2 Rabbit Monoclonal Antibody [Clone ID: EPR2278(2)]

Product data:

Product Type:	Primary Antibodies
Clone Name:	EPR2278(2)
Applications:	IF, WB
Recommended Dilution:	ICC/IF: 1:200; WB: 1:1000 - 1:10000
Reactivity:	Mouse, Human (Does not react with: Rat)
Modifications:	Phospho-specific
Host:	Rabbit
Isotype:	IgG
Clonality:	Monoclonal
Immunogen:	A phospho specific peptide corresponding to residues surrounding Serine 1404 of human FANCD2 was used as an immunogen. This antibody only detects FANCD2 phosphorylated at Serine 1404.
Formulation:	PBS 49%,Sodium azide 0.01%,Glycerol 50%,BSA 0.05%
Conjugation:	Unconjugated
Storage:	Store at -20°C as received.
Stability:	Stable for 12 months from date of receipt.
Gene Name:	Fanconi anemia complementation group D2
Database Link:	NP_149075 Entrez Gene 211651 Mouse Entrez Gene 312641 Rat Entrez Gene 2177 Human Q9BXW9



[View online »](#)

Background:

The Fanconi anemia complementation group (FANC) currently includes FANCA, FANCB, FANCC, FANCD1 (also called BRCA2), FANCD2, FANCE, FANCF, FANCG, FANCI, FANCI (also called BRIP1), FANCL, FANCM and FANCN (also called PALB2). The previously defined group, FANCH, is the same as FANCA. Fanconi anemia is a genetically heterogeneous recessive disorder characterized by cytogenetic instability, hypersensitivity to DNA crosslinking agents, increased chromosomal breakage, and defective DNA repair. The members of the Fanconi anemia complementation group do not share sequence similarity; they are related by their assembly into a common nuclear protein complex. FANCD2 is also known as Fanconi anemia group D2 protein. It is monoubiquitinated in response to DNA damage, resulting in its localization to nuclear foci with other proteins (BRCA1 AND BRCA2) involved in homology-directed DNA repair.

Synonyms:

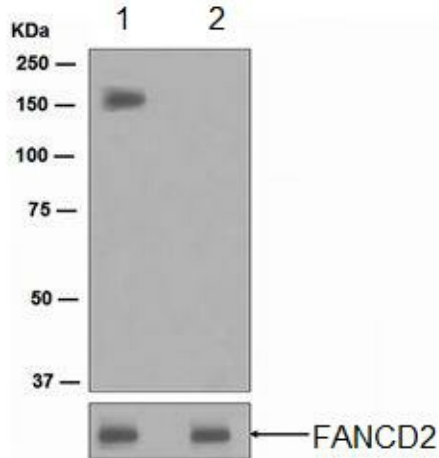
FA-D2; FA4; FACD; FAD; FAD2; FANCD

Note:

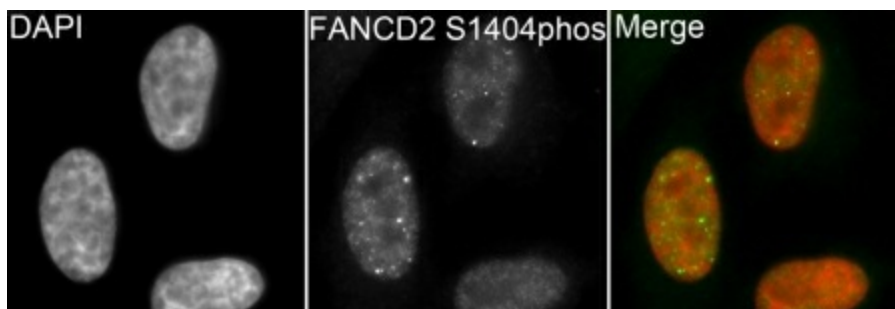
Is unsuitable for Flow Cyt, ICC, IHC-P or IP.

Protein Families:

Druggable Genome

Product images:


Western blot - FANCD2 (phospho S1404) antibody [EPR2278 (2)]; All lanes : Anti-FANCD2 (phospho S1404) antibody [EPR2278 (2)] at 1/1000 dilution. Lane 1 : HeLa cell lysate, untreated. Lane 2 : HeLa cell lysate treated with Alkaline Phosphatase. Lysates/proteins at 10 ug per lane. Secondary. HRP-labelled goat anti-rabbit at 1/2000 dilution. Predicted band size : 166 kDa.



Immunocytochemistry/ Immunofluorescence - Anti-FANCD2 (phospho S1404) antibody [EPR2278 (2)]; TA307855 (1/200) staining FANCD2 (phospho S1404) in HeLa cells (green). Cells were treated with Bleomycin for 2hrs to induce DNA damage, fixed in paraformaldehyde, permeabilized with 0.5% Triton X-100 and counterstained with DAPI in order to highlight the nucleus (red).