

Product datasheet for **TA307796**

Epac1 (RAPGEF3) Rabbit Monoclonal Antibody [Clone ID: EPR1672]

Product data:

Product Type:	Primary Antibodies
Clone Name:	EPR1672
Applications:	IHC, WB
Recommended Dilution:	WB: 1:1000 - 1:10000; IP: 1:10 - 1:100; IHC-P: 1:50 - 1:100; ICC: 1:50 - 1:100
Reactivity:	Mouse, Rat, Human
Host:	Rabbit
Isotype:	IgG
Clonality:	Monoclonal
Immunogen:	A synthetic peptide corresponding to residues in C-terminus of human Epac1 was used as an immunogen.
Formulation:	PBS 49%, Sodium azide 0.01%, Glycerol 50%, BSA 0.05%
Purification:	Tissue culture supernatant
Conjugation:	Unconjugated
Storage:	Store at -20°C as received.
Stability:	Stable for 12 months from date of receipt.
Predicted Protein Size:	104 kDa
Gene Name:	Rap guanine nucleotide exchange factor 3
Database Link:	NP_006096 Entrez Gene 59326 Rat Entrez Gene 223864 Mouse Entrez Gene 10411 Human O95398
Background:	Epac1 is a guanine nucleotide exchange factor (GEF) for the small G protein Rap and is directly activated by cyclic AMP (cAMP). Upon cAMP binding, Epac1 undergoes a conformational change that allows the interaction of its GEF domain with Rap, resulting in Rap activation and subsequent downstream effects, including integrin-mediated cell adhesion and cell-cell junction formation (1). In addition, activation of Epac1 has been shown to promote cell adhesion and polarization and enhance chemokine-induced migration (2).
Synonyms:	bcm910; CAMP-GEFI; EPAC; EPAC1; HSU79275

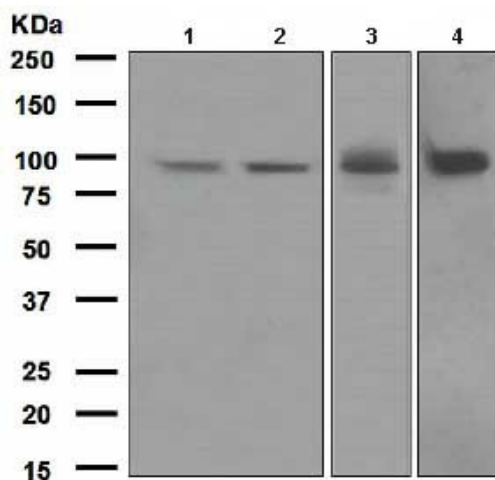


[View online »](#)

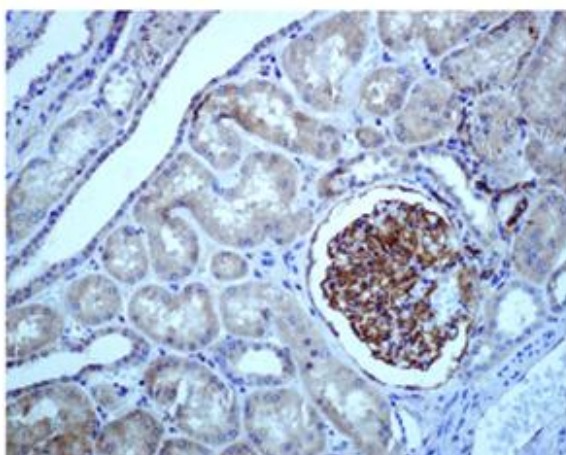
Note: Is unsuitable for Flow Cyt.

Protein Pathways: Leukocyte transendothelial migration, Long-term potentiation

Product images:



Western blot - Epac1 antibody [EPR1672]; All lanes : Anti-Epac1 antibody [EPR1672] at 1/1000 dilution. Lane 1 : HeLa cell lysate. Lane 2 : HepG2 cell lysate. Lane 3 : Human heart lysate. Lane 4 : HUVEC cell lysate. Lysates/proteins at 10 ug per lane. Predicted band size : 104 kDa.



Immunohistochemistry (Formalin/PFA-fixed paraffin-embedded sections) - Epac1 antibody [EPR1672]; Immunohistochemical analysis of Epac1 in paraffin-embedded Human kidney tissue using TA307796 at 1/50 dilution.