

## Product datasheet for **TA307736**

### Lysozyme (LYZ) Rabbit Monoclonal Antibody [Clone ID: EPR2995]

#### Product data:

Product Type:	Primary Antibodies
Clone Name:	EPR2995
Applications:	IF, WB
Recommended Dilution:	ICC: 1:100 - 200, IP: 1:10 - 100, WB: 1:1000 - 10,000
Reactivity:	Human (Does not react with: Mouse, Rat)
Host:	Rabbit
Isotype:	IgG
Clonality:	Monoclonal
Immunogen:	A synthetic peptide corresponding to residues in human Lysozyme C was used as an immunogen.
Formulation:	PBS 49%, Sodium azide 0.01%, Glycerol 50%, BSA 0.05%
Purification:	Tissue culture supernatant
Conjugation:	Unconjugated
Storage:	Store at -20°C as received.
Stability:	Stable for 12 months from date of receipt.
Predicted Protein Size:	17 kDa
Gene Name:	lysozyme
Database Link:	<a href="#">NP_000230</a> <a href="#">Entrez Gene 4069 Human</a> <a href="#">P61626</a>



[View online »](#)

**Background:**

Lysozyme is a ubiquitous enzyme defined as muraminidase catalyzing the hydrolysis of the beta (1-4) glycosidic bond in bacterial peptidoglycan, a major component of the bacterial cell wall (1). Lysozyme C in tissues and body fluids is associated with the monocyte-macrophage system and enhances the activity of immunoagents. Lysozyme C catalyzes the hydrolysis of certain mucopolysaccharides of bacterial cell walls. Specifically, it catalyzes the hydrolysis of the bacterial cell wall beta(1-4) glycosidic linkages between N-acetylmuramic acid and N-acetylglucosamine. It is found in spleen, lung, kidney, white blood cells, plasma, saliva, milk, and tears (2). Defects in LYZ are a cause of amyloidosis type 8 (AMYL8); also known as systemic non-neuropathic amyloidosis or Ostertag-type amyloidosis (3).

**Synonyms:**

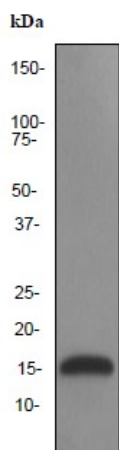
LYZF1; LZM

**Note:**

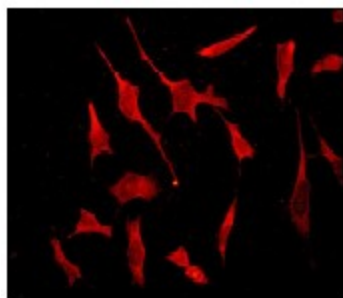
Does not react with Mouse, Rat

**Protein Families:**

Druggable Genome

**Product images:**

Western blot - Lysozyme antibody [EPR2995]; Anti-Lysozyme antibody [EPR2995] at 1/1000 dilution + HL-60 cell lysate at 10 ug.Secondary.HRP labelled goat anti-rabbit at 1/2000 dilution.Predicted band size : 17 kDa.



Immunocytochemistry/ Immunofluorescence - Lysozyme antibody [EPR2995]; TA307736 at 1/1000 dilution staining Lysozyme in HeLa cells