

## Product datasheet for **TA307721**

### Rb (RB1) Rabbit Monoclonal Antibody [Clone ID: EP44(2)]

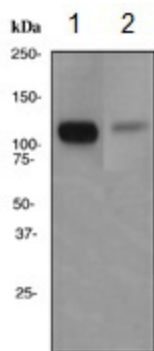
#### Product data:

Product Type:	Primary Antibodies
Clone Name:	EP44(2)
Applications:	WB
Recommended Dilution:	WB: 1:1000 - 1:2000
Reactivity:	Human (Does not react with: Mouse, Rat)
Host:	Rabbit
Isotype:	IgG
Clonality:	Monoclonal
Immunogen:	A synthetic peptide corresponding to residues in human Rb was used as an immunogen.
Formulation:	PBS 49%,Sodium azide 0.01%,Glycerol 50%,BSA 0.05%
Conjugation:	Unconjugated
Storage:	Store at -20°C as received.
Stability:	Stable for 12 months from date of receipt.
Gene Name:	RB transcriptional corepressor 1
Database Link:	<a href="#">NP_000312</a> <a href="#">Entrez Gene 19645 Mouse</a> <a href="#">Entrez Gene 24708 Rat</a> <a href="#">Entrez Gene 5925 Human</a> <a href="#">P06400</a>
Background:	Retinoblastoma tumor suppressor protein (Rb) is associated with DNA binding activity and is thought to play a significant role in controlling cell cycle progression during tumor growth (1, 2). Cell cycle-dependent phosphorylation by cdk's inhibits Rb binding, thus allowing cell cycle progression (3). Rb inactivation and cell cycle progression likely requires first phosphorylation by cyclin D-cdk4/6 followed by cyclin E-cdk2 phosphorylation (4).
Synonyms:	OSRC; p105-Rb; pp110; PPP1R130; pRb; RB
Note:	Is unsuitable for Flow Cyt,ICC,IHC-P or IP.
Protein Families:	Druggable Genome, Transcription Factors
Protein Pathways:	Bladder cancer, Cell cycle, Chronic myeloid leukemia, Glioma, Melanoma, Non-small cell lung cancer, Pancreatic cancer, Pathways in cancer, Prostate cancer, Small cell lung cancer



[View online »](#)

## Product images:



Western blot - Rb antibody [EP44 (2)]; All lanes : Anti-Rb antibody [EP44 (2)] at 1/1000 dilution. Lane 1 : Jurkat cell lysates. Lane 2 : K562 cell lysates. Lysates/proteins at 10 ug per lane. Predicted band size : 106 kDa.