

Product datasheet for **TA307716**

Prealbumin (TTR) Rabbit Monoclonal Antibody [Clone ID: EPR2928(2)]

Product data:

Product Type:	Primary Antibodies
Clone Name:	EPR2928(2)
Applications:	IHC, WB
Recommended Dilution:	WB: 1:1000 - 1:10000; IP: 1:10 - 1:100; IHC-P: 1:100 - 1:250
Reactivity:	Human (Does not react with: Mouse, Rat)
Host:	Rabbit
Isotype:	IgG
Clonality:	Monoclonal
Immunogen:	A synthetic peptide corresponding to residues in human Prealbumin was used as an immunogen.
Formulation:	pH: 7.40Preservative: 0.01% Sodium azide; Constituents: 50% Glycerol, 0.05% BSA
Conjugation:	Unconjugated
Storage:	Store at -20°C as received.
Stability:	Stable for 12 months from date of receipt.
Gene Name:	transthyretin
Database Link:	NP_000362 Entrez Gene 22139 Mouse Entrez Gene 24856 Rat Entrez Gene 7276 Human P02766

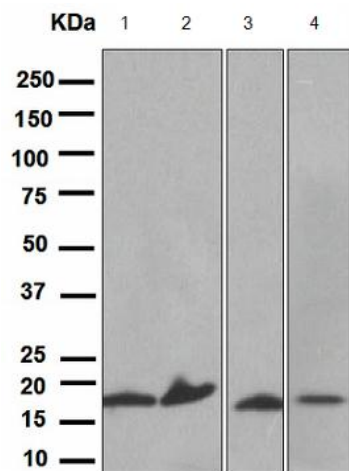
Background: Prealbumin (TTR) is a hormone-binding protein that participates in the plasma transport of both thyroxine and retinol (vitamin A). Prealbumin concentrations are disproportionately high in human ventricular cerebrospinal fluid (CSF). It is reported to be either selectively transported across or synthesized within the blood-CSF barrier (3). Over 80 different disease-causing mutations in prealbumin have been reported. The vast majority is inherited in an autosomal dominant manner and is related to amyloid deposition, affecting predominantly peripheral nerve and/or the heart. A small portion of prealbumin mutations are apparently non-amyloidogenic (4). The human amyloid disorders, familial amyloid polyneuropathy, familial amyloid cardiomyopathy and senile systemic amyloidosis, are caused by insoluble prealbumin fibrils (2).



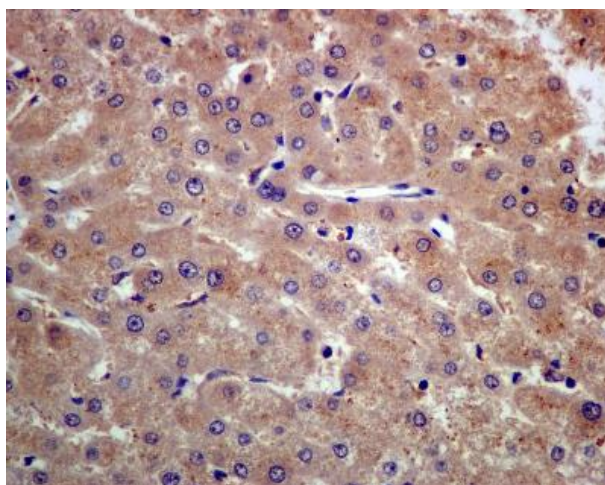
[View online »](#)

Synonyms: CTS; CTS1; HEL111; Hst2651; PALB; TBPA
Note: Is unsuitable for Flow Cyt or ICC.
Protein Families: ES Cell Differentiation/IPS, Secreted Protein

Product images:



Western blot - Anti-Prealbumin antibody [EPR2928 (2)]; All lanes : Anti-Prealbumin antibody [EPR2928 (2)] at 1/1000 dilution. Lane 1 : Human placenta lysate. Lane 2 : Human heart lysate. Lane 3 : Fetal kidney lysate. Lane 4 : Fetal liver lysate. Secondary. HRP labelled goat anti-rabbit at 1/2000 dilution. Predicted band size : 15 kDa.



Immunohistochemistry (Formalin/PFA-fixed paraffin-embedded sections) - Anti-Prealbumin antibody [EPR2928 (2)]; Immunohistochemical analysis of paraffin-embedded Human liver tissue labelling Prealbumin with TA307716 at 1/100 dilution.