

Product datasheet for **TA307631**

HSP90AA1 Rabbit Monoclonal Antibody [Clone ID: EPNCIR102]

Product data:

Product Type:	Primary Antibodies
Clone Name:	EPNCIR102
Applications:	IHC, WB
Recommended Dilution:	WB: 1:1000 - 1:10000; IHC-P: 1:50 - 1:100
Reactivity:	Mouse, Rat, Human
Host:	Rabbit
Isotype:	IgG
Clonality:	Monoclonal
Immunogen:	A synthetic peptide corresponding to residues in human Hsp90 Alpha was used as an immunogen.
Formulation:	PBS 49%, Sodium azide 0.01%, Glycerol 50%, BSA 0.05%
Purification:	Tissue culture supernatant
Conjugation:	Unconjugated
Storage:	Store at -20°C as received.
Stability:	Stable for 12 months from date of receipt.
Predicted Protein Size:	85 kDa
Gene Name:	heat shock protein 90kDa alpha family class A member 1
Database Link:	NP_001017963 Entrez Gene 15519 Mouse Entrez Gene 299331 Rat Entrez Gene 3320 Human P07900



[View online »](#)

Background:

Heat shock protein 90 alpha (Hsp90 alpha) is a cytosolic homodimeric molecular chaperone that modulates the stability and/or transport of a diverse set of critical cellular regulatory, metabolism, organization, and signaling proteins (1). Hsp90 distinguishes itself from other chaperones by having most of its known substrates as signal transduction proteins; e.g. non activated steroid hormone receptors, several proto-oncogenic tyrosine and serine/threonine kinases, and actin (2). These substrates are brought into complex by a multiprotein hsp90/hsp70-based chaperone machinery to function in protein folding (3). Two isoforms correspond to the major and minor isoform, Hsp90 alpha and Hsp90 beta. Hsp90 beta is expressed constitutively to a high level in most tissues and is generally more abundant than Hsp90 alpha, whereas Hsp90 alpha is stress-inducible and overexpressed in many cancer cells (4).

Synonyms:

EL52; HSP86; Hsp89; HSP89A; Hsp90; HSP90A; HSP90N; HSPC1; HSPCA; HSPCAL1; HSPCAL4; HSPN; LAP-2; LAP2

Note:

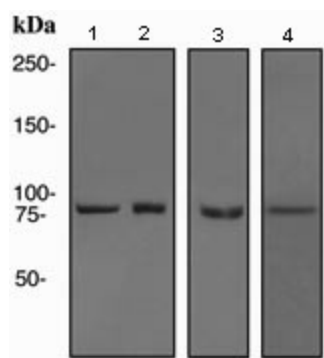
Is unsuitable for Flow Cyt, ICC or IP.

Protein Families:

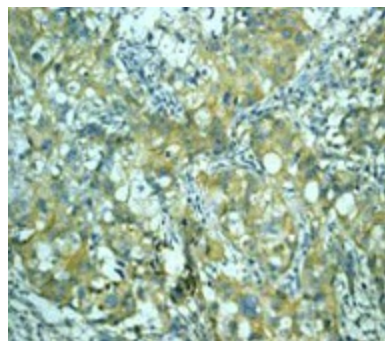
Druggable Genome

Protein Pathways:

Antigen processing and presentation, NOD-like receptor signaling pathway, Pathways in cancer, Progesterone-mediated oocyte maturation, Prostate cancer

Product images:


Western blot - Hsp90 alpha antibody [EPNCIR102]; All lanes : Anti-Hsp90 alpha antibody [EPNCIR102] at 1/1000 dilution. Lane 1 : HeLa cell lysate. Lane 2 : Jurkat cell lysate. Lane 3 : SKBR3 cell lysate. Lane 4 : K562 cell lysate. Lysates/proteins at 10 ug per lane. Predicted band size : 85 kDa.



Immunohistochemistry (Formalin/PFA-fixed paraffin-embedded sections) - Hsp90 alpha antibody [EPNCIR102]; TA307631 at 1/50 dilution staining Hsp90 alpha in Human breast carcinoma by Immunohistochemistry, Paraffin-embedded tissue.