

Product datasheet for **TA307584**

INPP4A Rabbit Monoclonal Antibody [Clone ID: EP3425(2)]

Product data:

Product Type:	Primary Antibodies
Clone Name:	EP3425(2)
Applications:	IHC, WB
Recommended Dilution:	WB: 1:1000 - 1:10000; IHC-P: 1:100 - 1:250; ICC: 1:100 - 1:250
Reactivity:	Mouse, Rat, Human
Host:	Rabbit
Isotype:	IgG
Clonality:	Monoclonal
Immunogen:	A synthetic peptide corresponding to residues in human INPP4A was used as an immunogen.
Formulation:	PBS 49%, Sodium azide 0.01%, Glycerol 50%, BSA 0.05%
Purification:	Tissue culture supernatant
Conjugation:	Unconjugated
Storage:	Store at -20°C as received.
Stability:	Stable for 12 months from date of receipt.
Predicted Protein Size:	110 kDa
Gene Name:	inositol polyphosphate-4-phosphatase type I A
Database Link:	NP_001127696 Entrez Gene 80849 Rat Entrez Gene 269180 Mouse Entrez Gene 3631 Human Q96PE3
Background:	INPP4A (Inositol polyphosphate 4-phosphatase), an enzyme of the inositol phosphate signaling pathway, catalyzes the hydrolysis of the 4-position phosphate of inositol 3,4-bisphosphate, inositol 1,3,4-trisphosphate, and phosphatidylinositol 3,4-bisphosphate (1). Hydrolysis of the 4-position phosphate of phosphatidylinositol 3,4-bisphosphate has been implicated in mitogenesis mediated by PDGF receptor, the oxidative burst of neutrophils, and translocation of the glucose transporter to the plasma membrane (2).
Synonyms:	INPP4; TVAS1
Note:	Is unsuitable for Flow Cyt or IP.

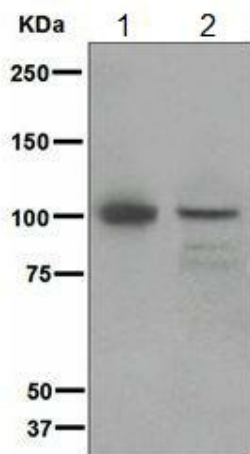


[View online »](#)

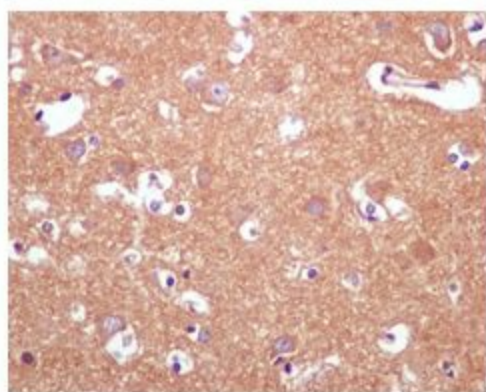
Protein Families: Transmembrane

Protein Pathways: Inositol phosphate metabolism, Metabolic pathways, Phosphatidylinositol signaling system

Product images:



Western blot - INPP4A antibody [EP3425 (2)]; All lanes : Anti-INPP4A antibody [EP3425 (2)] at 1/1000 dilution.Lane 1 : Fetal brain lysate.Lane 2 : Jurkat cell lysate.Lysates/proteins at 10 ug per lane.Secondary.HRP-labelled goat anti-rabbit at 1/2000 dilution.Predicted band size : 110 kDa.Observed band size : 104 kDa.



Immunohistochemistry (Formalin/PFA-fixed paraffin-embedded sections) - INPP4A antibody [EP3425 (2)]; TA307584 at 1/100 dilution staining INPP4A in paraffin-embedded Human brain tissue by Immunohistochemistry.