

Product datasheet for **TA307579**

Apolipoprotein L 1 (APOL1) Rabbit Monoclonal Antibody [Clone ID: EPR2907(2)]

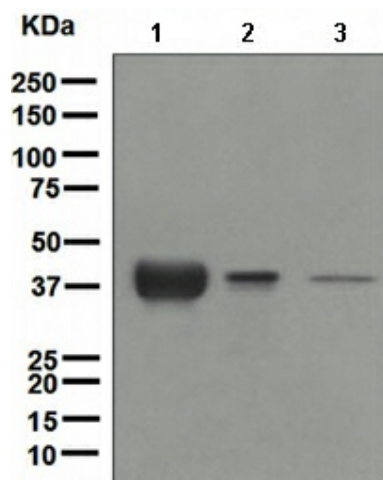
Product data:

Product Type:	Primary Antibodies
Clone Name:	EPR2907(2)
Applications:	WB
Recommended Dilution:	WB: 1:1000 - 1:10000; IP: 1:10 - 1:100; ICC: 1:100 - 1:250; FC: 1:10 - 1:100
Reactivity:	Human (Does not react with: Mouse, Rat)
Host:	Rabbit
Isotype:	IgG
Clonality:	Monoclonal
Immunogen:	A synthetic peptide corresponding to residues in human Apolipoprotein L1 was used as an immunogen.
Formulation:	PBS 49%, Sodium azide 0.01%, Glycerol 50%, BSA 0.05%
Conjugation:	Unconjugated
Storage:	Store at -20°C as received.
Stability:	Stable for 12 months from date of receipt.
Gene Name:	apolipoprotein L1
Database Link:	NP_001130012 Entrez Gene 8542 Human Q14791
Background:	Apolipoprotein L1 is a secreted high density lipoprotein which binds to apolipoprotein A-I. Apolipoprotein A-I is a relatively abundant plasma protein and is the major apoprotein of HDL. Apolipoprotein L1 is involved in the formation of most cholesteryl esters in plasma and also promotes efflux of cholesterol from cells. This apolipoprotein L family member may play a role in lipid exchange and transport throughout the body, as well as in reverse cholesterol transport from peripheral cells to the liver. Several different transcript variants encoding different isoforms have been found for this protein (1).
Synonyms:	APO-L; APOL; APOL-I; FSGS4
Note:	Is unsuitable for IHC-P.
Protein Families:	Secreted Protein, Transmembrane



[View online »](#)

Product images:



Western blot - Apolipoprotein L 1 antibody [EPR2907 (2)]; All lanes : Anti-Apolipoprotein L 1 antibody [EPR2907 (2)] at 1/1000 dilution. Lane 1 : Human plasma lysate. Lane 2 : Human ovary cancer lysate. Lane 3 : HepG2 cell lysate. Lysates/proteins at 10 ug per lane. Predicted band size : 44 kDa.