

## Product datasheet for **TA307568**

### CD13 (ANPEP) Rabbit Monoclonal Antibody [Clone ID: EPR4058]

#### Product data:

Product Type:	Primary Antibodies
Clone Name:	EPR4058
Applications:	IHC, WB
Recommended Dilution:	WB: 1:1000 - 1:10000; IP: 1:10 - 1:100; IHC-P: 1:250 - 1:500; ICC: 1:250 - 1:500
Reactivity:	Mouse, Rat, Human
Host:	Rabbit
Isotype:	IgG
Clonality:	Monoclonal
Immunogen:	A synthetic peptide corresponding to residues in human CD13 was used as an immunogen.
Formulation:	PBS 49%, Sodium azide 0.01%, Glycerol 50%, BSA 0.05%
Purification:	Tissue culture supernatant
Conjugation:	Unconjugated
Storage:	Store at -20°C as received.
Stability:	Stable for 12 months from date of receipt.
Predicted Protein Size:	110 kDa
Gene Name:	alanyl aminopeptidase, membrane
Database Link:	<a href="#">NP_001141</a> <a href="#">Entrez Gene 16790 Mouse</a> <a href="#">Entrez Gene 81641 Rat</a> <a href="#">Entrez Gene 290 Human</a> <a href="#">P15144</a>



[View online »](#)

**Background:**

CD13 (Aminopeptidase N) is a single-pass type II membrane protein located in the small-intestinal and renal microvillar membrane, and it is also in other plasma membranes. In the small intestine, CD13 plays a role in the final digestion of peptides generated from hydrolysis of proteins by gastric and pancreatic proteases. Its function in proximal tubular epithelial cells and other cell types is less clear. The large extracellular carboxyterminal domain contains a pentapeptide consensus sequence characteristic of members of the zinc-binding metalloproteinase superfamily. CD13 is involved in the metabolism of regulatory peptides by diverse cell types such as small intestinal and renal tubular epithelial cells, macrophages, granulocytes, and synaptic membranes from the CNS. Human CD13 is a receptor for one strain of human coronavirus that is an important cause of upper respiratory tract infections. Defects in CD13 appear to be a cause of various types of leukemia or lymphoma.

**Synonyms:**

APN; CD13; GP150; LAP1; P150; PEPN

**Note:**

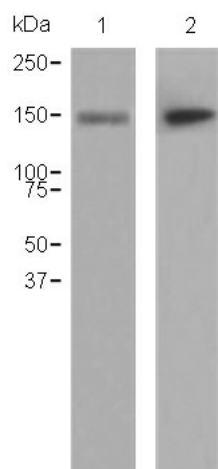
Is unsuitable for Flow Cyt.

**Protein Families:**

Druggable Genome, ES Cell Differentiation/IPS, Protease, Transmembrane

**Protein Pathways:**

Glutathione metabolism, Hematopoietic cell lineage, Metabolic pathways, Renin-angiotensin system

**Product images:**

Western blot - CD13 antibody [EPR4058]; All lanes : Anti-CD13 antibody [EPR4058] at 1/1000 dilution.Lane 1 : THP-1 cell lysate at 10 ug.Lane 2 : human fetal liver lysate.Performed under reducing conditions.Predicted band size : 110 kDa.

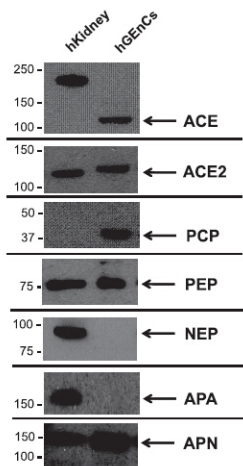
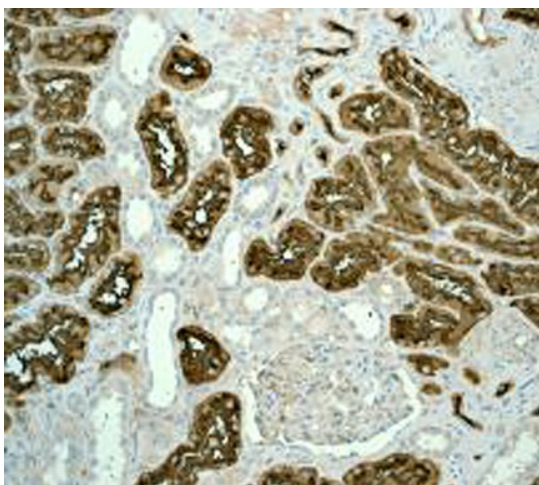
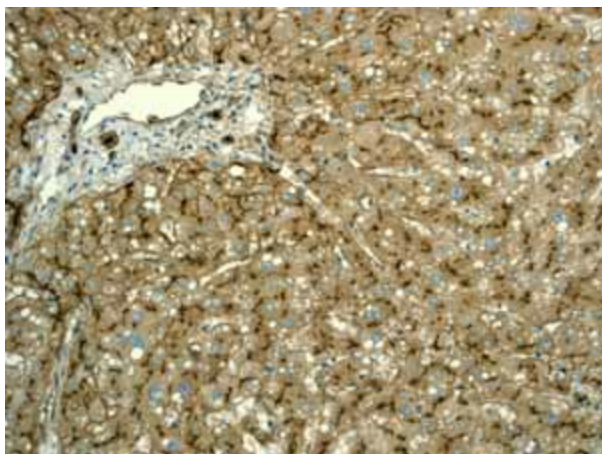


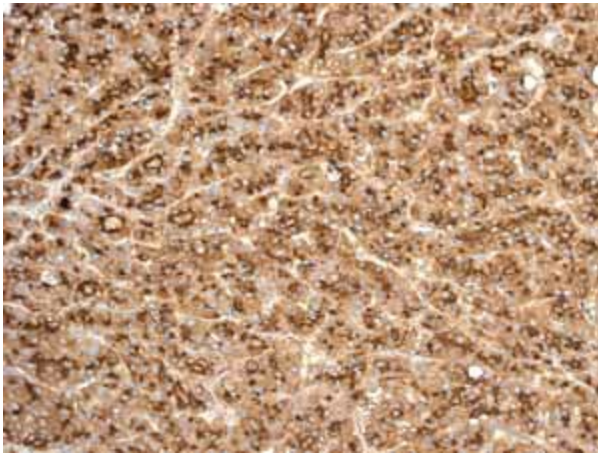
Figure from citation: Western Blot of ANPEP (APN) protein level by using anti-ANPEP antibody in hGEnCs extracts. Dilution: 1:1000 [View Citation](#)



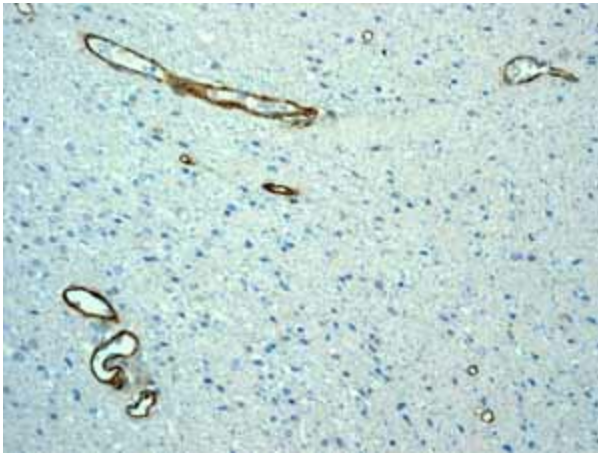
Immunohistochemistry (Formalin/PFA-fixed paraffin-embedded sections) - CD13 antibody [EPR4058]; TA307568, at 1/250, staining CD13 in human kidney tissue by immunohistochemistry.



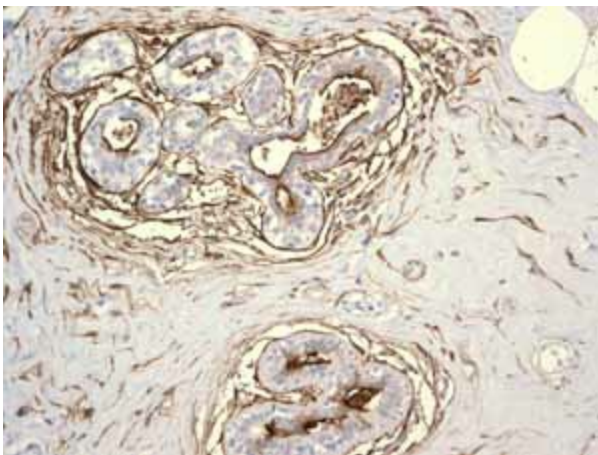
Immunohistochemistry (Formalin/PFA-fixed paraffin-embedded sections)-Anti-CD13 antibody [EPR4058] (TA307568); TA307568 showing positive staining in Normal liver tissue.



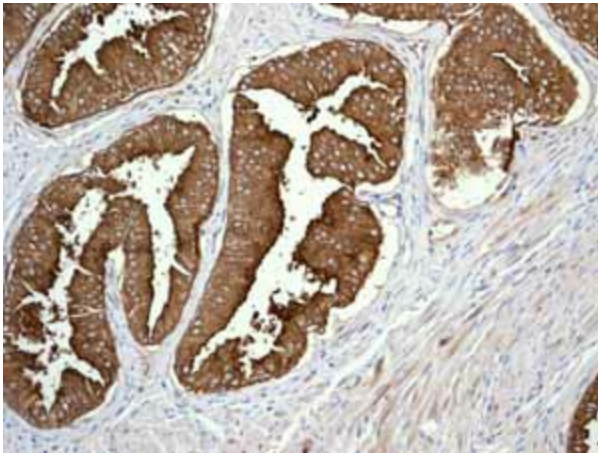
Immunohistochemistry (Formalin/PFA-fixed paraffin-embedded sections)-Anti-CD13 antibody [EPR4058] (TA307568); TA307568 showing positive staining in Hepatocellular carcinoma tissue.



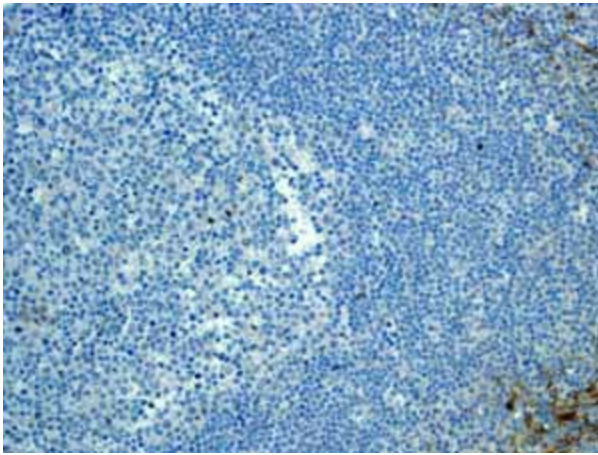
Immunohistochemistry (Formalin/PFA-fixed paraffin-embedded sections)-Anti-CD13 antibody [EPR4058] (TA307568); TA307568 showing positive staining in Astrocytoma tissue.



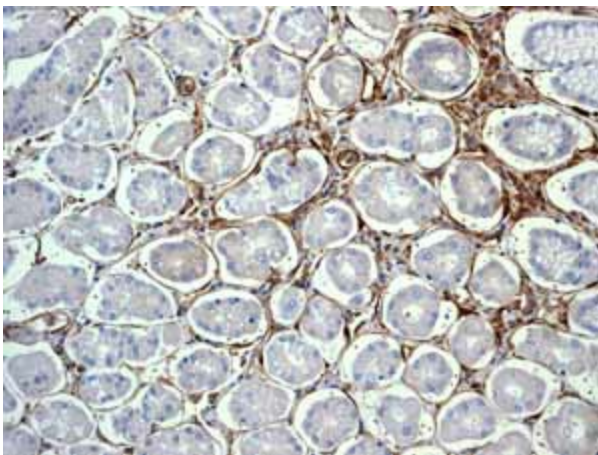
Immunohistochemistry (Formalin/PFA-fixed paraffin-embedded sections)-Anti-CD13 antibody [EPR4058] (TA307568); TA307568 showing positive staining in Normal breast tissue.



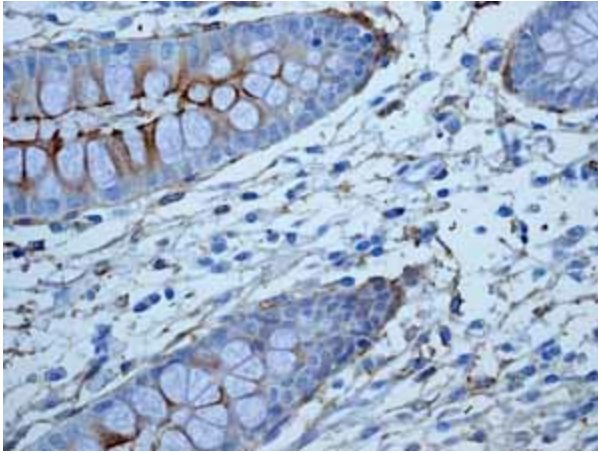
Immunohistochemistry (Formalin/PFA-fixed paraffin-embedded sections)-Anti-CD13 antibody [EPR4058] (TA307568); TA307568 showing positive staining in Prostatic carcinoma tissue.



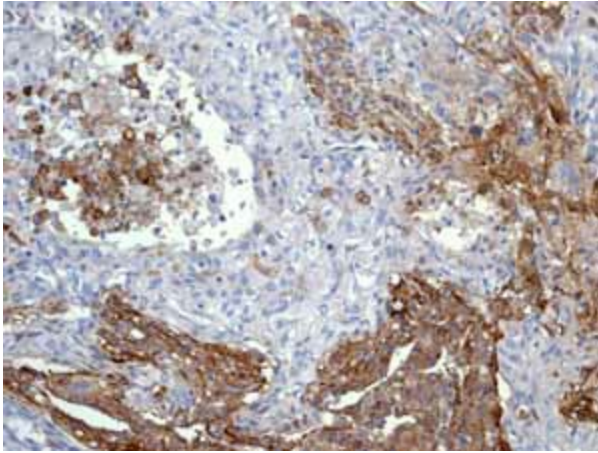
Immunohistochemistry (Formalin/PFA-fixed paraffin-embedded sections)-Anti-CD13 antibody [EPR4058] (TA307568); TA307568 showing positive staining in Normal tonsil tissue.



Immunohistochemistry (Formalin/PFA-fixed paraffin-embedded sections)-Anti-CD13 antibody [EPR4058] (TA307568); TA307568 showing positive staining in Normal stomach tissue.



Immunohistochemistry (Formalin/PFA-fixed paraffin-embedded sections)-Anti-CD13 antibody [EPR4058] (TA307568); TA307568 showing positive staining in Normal colon tissue.



Immunohistochemistry (Formalin/PFA-fixed paraffin-embedded sections)-Anti-CD13 antibody [EPR4058] (TA307568); TA307568 showing positive staining in Lung adenocarcinoma tissue.