

Product datasheet for **TA307565**

Annexin V (ANXA5) Rabbit Monoclonal Antibody [Clone ID: EPR3979]

Product data:

Product Type:	Primary Antibodies
Clone Name:	EPR3979
Applications:	IHC, WB
Recommended Dilution:	WB: 1:1000 - 1:10000; IHC-P: 1:100 - 1:250; ICC: 1:100 - 1:250
Reactivity:	Human
Host:	Rabbit
Isotype:	IgG
Clonality:	Monoclonal
Immunogen:	A synthetic peptide corresponding to residues in human Annexin V was used as an immunogen.
Formulation:	PBS 49%, Sodium azide 0.01%, Glycerol 50%, BSA 0.05%
Purification:	Tissue culture supernatant
Conjugation:	Unconjugated
Storage:	Store at -20°C as received.
Stability:	Stable for 12 months from date of receipt.
Predicted Protein Size:	36 kDa
Gene Name:	annexin A5
Database Link:	NP_001145 Entrez Gene 308 Human P08758



[View online »](#)

Background:

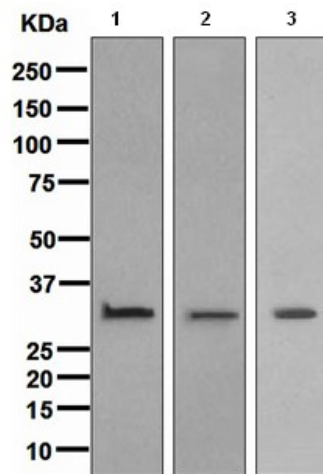
Annexin V (ANV) is a calcium-dependent glycoprotein with a potent anticoagulant capacity in vitro, mainly as a result of its negatively charged membrane phospholipids, and capable of inhibiting the prothrombinase and Tensa complexes to reduce plaque adhesion and aggregation. Circulating ANV can be released from the cells of the vascular wall (endothelial cells, smooth muscles cells) or from secretor cells of the spleen and liver. Once it is in the plasma, it binds to blood cells (platelets and erythrocytes) or to endothelial cells (1). Annexin V is also a Ca²⁺ dependent membrane-binding protein that forms voltage-dependent Ca²⁺ channels in phospholipid bilayers (2). Structural features suggest that Annexin V attaches with its convex face to membrane by specific calcium mediated interactions with at least three phospholipids. The adjacent membrane bilayer may thus become locally disordered and permeable to allow calcium inflow through the central polar channel of the molecule.

Synonyms:

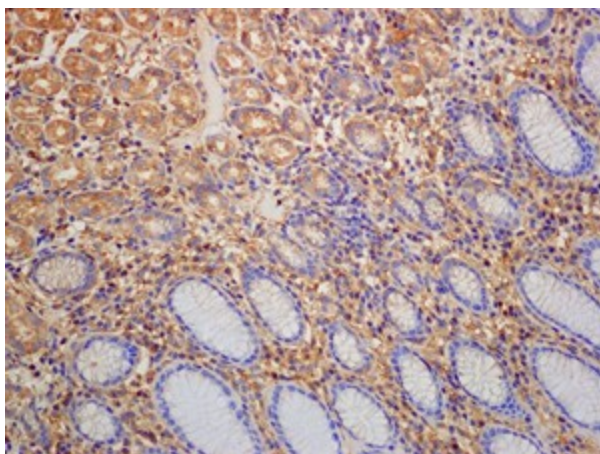
ANX5; ENX2; HEL-S-7; PP4; RPRGL3

Note:

Is unsuitable for Flow Cyt or IP.

Product images:

Western blot - Annexin V antibody [EPR3979]; All lanes : Anti-Annexin V antibody [EPR3979] at 1/1000 dilution. Lane 1 : HeLa cell lysate. Lane 2 : JAR cell lysate. Lane 3 : fetal kidney lysate. Lysates/proteins at 10 ug per lane. Predicted band size : 36 kDa.



Immunohistochemistry (Formalin/PFA-fixed paraffin-embedded sections) - Annexin V antibody [EPR3979]; Immunohistochemical analysis of Annexin V in paraffin embedded Human gastric tissue, using TA307565 at a 1/100 dilution.