

## Product datasheet for **TA307534**

### CD166 (ALCAM) Rabbit Monoclonal Antibody [Clone ID: EPR2759(2)]

#### Product data:

|                         |  |
|-------------------------|--|
| Product Type:           | Primary Antibodies   |
| Clone Name:             | EPR2759(2)   |
| Applications:           | IHC, WB  |
| Recommended Dilution:   | WB: 1:1000 - 1:10000; IP: 1:10 - 1:100; IHC-P: 1:100 - 1:250; ICC: 1:100 - 1:250   |
| Reactivity:             | Mouse, Rat, Human  |
| Host:                   | Rabbit   |
| Isotype:                | IgG  |
| Clonality:              | Monoclonal   |
| Immunogen:              | A synthetic peptide corresponding to residues in human ALCAM/CD166 was used as an immunogen.   |
| Formulation:            | pH: 7.40<br>Preservative: 0.01% Sodium azide<br>Constituents: 50% Glycerol, 0.05% BSA  |
| Purification:           | Tissue culture supernatant   |
| Conjugation:            | Unconjugated   |
| Storage:                | Store at -20°C as received.  |
| Stability:              | Stable for 12 months from date of receipt.   |
| Predicted Protein Size: | 65 kDa   |
| Gene Name:              | activated leukocyte cell adhesion molecule   |
| Database Link:          | <a href="#">NP_001618</a><br><a href="#">Entrez Gene 11658 Mouse</a> <a href="#">Entrez Gene 79559 Rat</a> <a href="#">Entrez Gene 214 Human</a><br><a href="#">Q13740</a>   |
| Background:             | ALCAM/CD166 is a cell adhesion molecule that binds to CD6. It is involved in neurite extension by neurons via heterophilic and homophilic interactions. It may play a role in the binding of T- and B-cells to activated leukocytes, as well as in interactions between cells of the nervous system (1). |
| Synonyms:               | CD166; MEMD  |



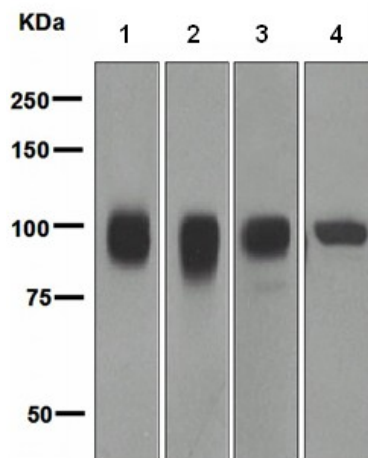
[View online »](#)

**Note:** Is unsuitable for Flow Cyt.

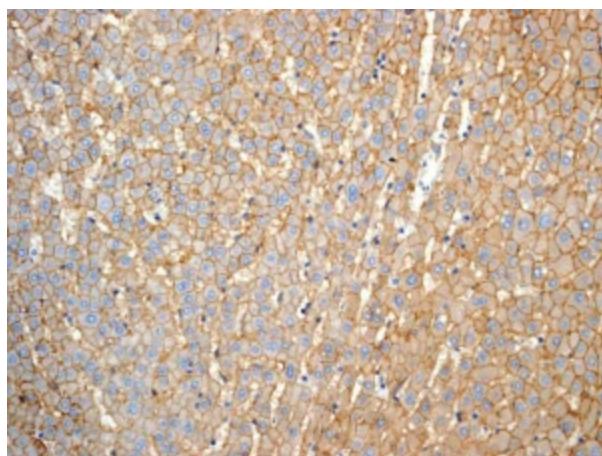
**Protein Families:** Druggable Genome, ES Cell Differentiation/IPS, Transmembrane

**Protein Pathways:** Cell adhesion molecules (CAMs)

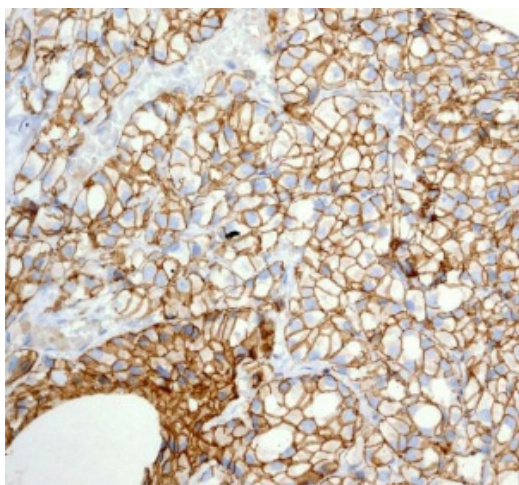
### Product images:



Western blot - CD166 antibody [EPR2759 (2)]; All lanes : Anti-CD166 antibody [EPR2759 (2)] at 1/1000 dilution.Lane 1 : SH-SY5Y cell lysate.Lane 2 : HuT-78 cell lysate.Lane 3 : HT-1080 cell lysate.Lane 4 : Daudi cell lysate.Lysates/proteins at 10 ug per lane.Secondary.HRP labelled goat anti-rabbit at 1/2000 dilution.Predicted band size : 65 kDa.Observed band size : 100-105 kDa.



Immunohistochemistry (Formalin/PFA-fixed paraffin-embedded sections) - CD166 antibody [EPR2759 (2)]; TA307534, at a 1/100 dilution, staining CD166 in paraffin embedded Human liver tissue by Immunohistochemistry.



Immunohistochemistry (Formalin/PFA-fixed paraffin-embedded sections) - CD166 antibody [EPR2759 (2)]; TA307534, at a 1/100 dilution, staining CD166 in paraffin embedded Human prostatic adenocarcinoma tissue by Immunohistochemistry.