

Product datasheet for **TA307516**

Calcitonin (CALCA) Rabbit Monoclonal Antibody [Clone ID: EPR68(2)]

Product data:

Product Type:	Primary Antibodies
Clone Name:	EPR68(2)
Applications:	IHC
Recommended Dilution:	IHC-P: 1:100 - 1:250
Reactivity:	Human
Host:	Rabbit
Isotype:	IgG
Clonality:	Monoclonal
Immunogen:	A synthetic peptide corresponding to residues in human Calcitonin was used as an immunogen.
Formulation:	pH: 7.40 Preservative: 0.01% Sodium azide Constituents: 50% Glycerol, 0.05% BSA
Purification:	Tissue culture supernatant
Conjugation:	Unconjugated
Storage:	Store at -20°C as received.
Stability:	Stable for 12 months from date of receipt.
Predicted Protein Size:	15 kDa
Gene Name:	calcitonin related polypeptide alpha
Database Link:	NP_001732 Entrez Gene 796 Human P06881



[View online »](#)

Background:

Calcitonin (Katacalcin) is a 32-amino acid polypeptide hormone that is commonly expressed in the parafollicular or C cells in the thyroid gland. It is also synthesized in a wide variety of other tissues, including the lung and intestinal tract (1). Calcitonin is a potent plasma calcium-lowering peptide; it decreases the level of calcium and phosphate in blood by promoting the incorporation of these ions in bones. Calcitonin staining is used in the identification of C cell proliferative abnormalities, such as C cell hyperplasia and invasive tumors (2). Staining for calcitonin may be used for the identification of a spectrum of C cell proliferative abnormalities ranging from C cell hyperplasia to invasive tumors (e.g. medullary thyroid carcinomas). Calcitonin activity might be exhibited in amyloid deposits within the tumor.

Synonyms:

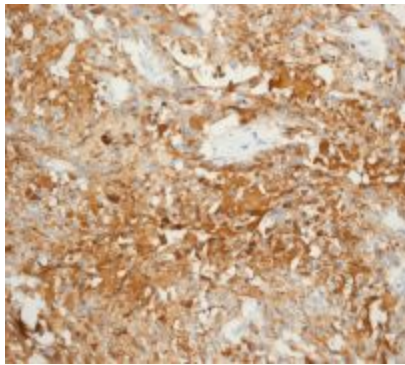
CALC1; CGRP; CGRP-I; CGRP1; CT; KC; PCT

Note:

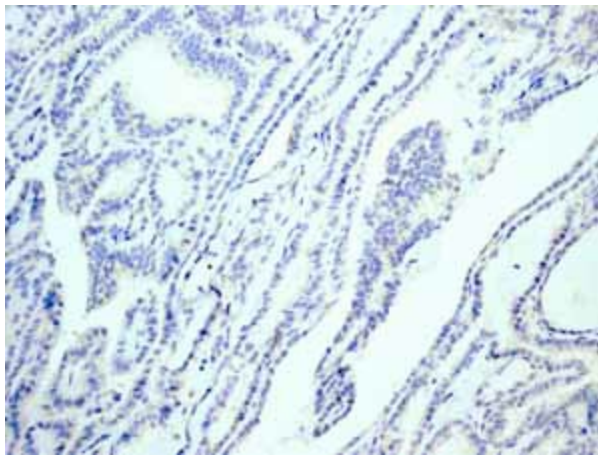
Is unsuitable for Flow Cyt, ICC/IF, IP or WB.

Protein Families:

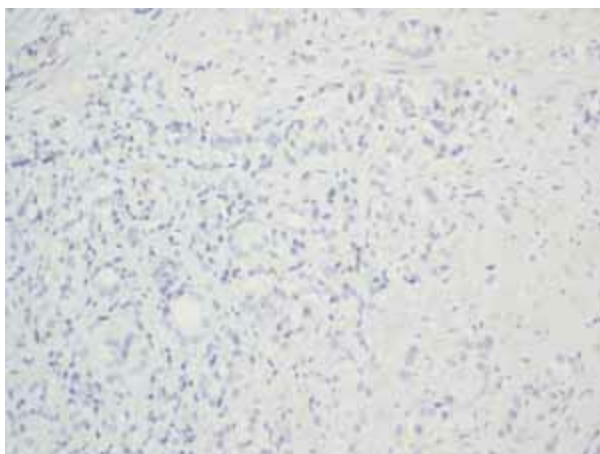
Druggable Genome, Secreted Protein

Product images:

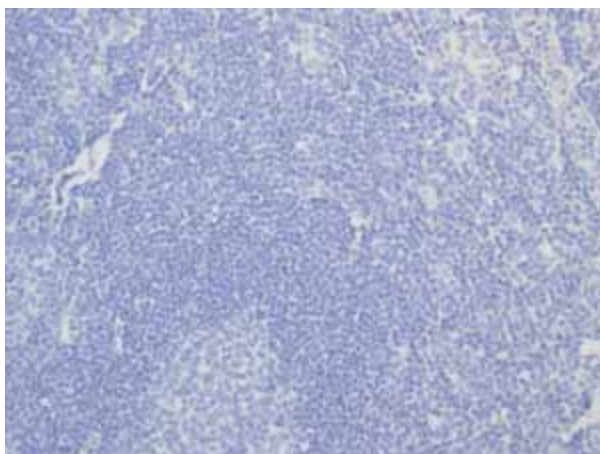
Immunohistochemistry (Formalin/PFA-fixed paraffin-embedded sections) - Anti-Calcitonin antibody [EPR68 (2)]; Immunohistochemical staining of Calcitonin in paraffin embedded Human medullary carcinoma of thyroid gland, using TA307516 at a 1/100 dilution.



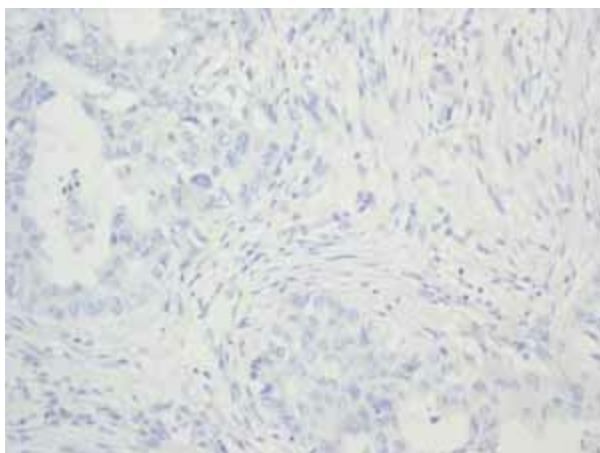
Immunohistochemistry (Formalin/PFA-fixed paraffin-embedded sections)-Anti-Calcitonin antibody [EPR68 (2)] (TA307516); Immunohistochemical analysis of paraffin embedded Human Papillary carcinoma of thyroid gland tissue using TA307516 showing -ve staining.



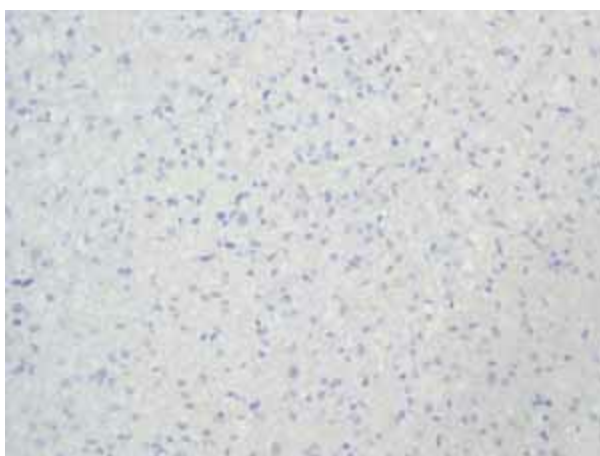
Immunohistochemistry (Formalin/PFA-fixed paraffin-embedded sections)-Anti-Calcitonin antibody [EPR68 (2)] (TA307516); Immunohistochemical analysis of paraffin embedded Human Prostatic carcinoma tissue using TA307516 showing -ve staining.



Immunohistochemistry (Formalin/PFA-fixed paraffin-embedded sections)-Anti-Calcitonin antibody [EPR68 (2)] (TA307516); Immunohistochemical analysis of paraffin embedded normal Human tonsil tissue using TA307516 showing -ve staining.



Immunohistochemistry (Formalin/PFA-fixed paraffin-embedded sections)-Anti-Calcitonin antibody [EPR68 (2)] (TA307516); Immunohistochemical analysis of paraffin embedded Human Breast carcinoma tissue using TA307516 showing -ve staining.



Immunohistochemistry (Formalin/PFA-fixed paraffin-embedded sections)-Anti-Calcitonin antibody [EPR68 (2)] (TA307516); Immunohistochemical analysis of paraffin embedded Human Glioma tissue using TA307516 showing -ve staining.