

Product datasheet for **TA307406**

c Rel (REL) Rabbit Monoclonal Antibody [Clone ID: EPR2558]

Product data:

Product Type:	Primary Antibodies
Clone Name:	EPR2558
Applications:	IF, IHC, WB
Recommended Dilution:	ICC/IF: Use at an assay dependent concentration; WB: 1:1000 - 1:10000; IP: 1:10 - 1:100; IHC-P: 1:100 - 1:250; ICC: 1:100 - 1:250
Reactivity:	Human (Does not react with: Mouse, Rat)
Host:	Rabbit
Isotype:	IgG
Clonality:	Monoclonal
Immunogen:	A synthetic peptide corresponding to residues in human c-Rel was used as an immunogen.
Formulation:	PBS 49%, Sodium azide 0.01%, Glycerol 50%, BSA 0.05%
Conjugation:	Unconjugated
Storage:	Store at -20°C as received.
Stability:	Stable for 12 months from date of receipt.
Gene Name:	REL proto-oncogene, NF-kB subunit
Database Link:	NP_002899 Entrez Gene 19696 Mouse Entrez Gene 305584 Rat Entrez Gene 5966 Human Q04864

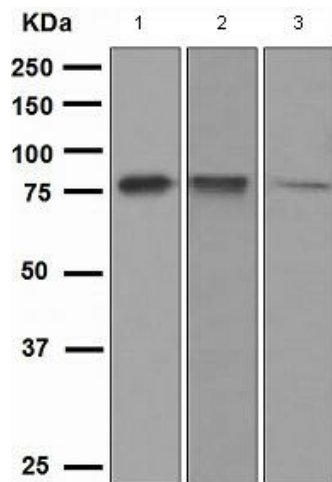
Background: c-Rel is a member of the nuclear factor kB (NF-kB) transcription factor family. The NF-kB family of dimeric transcription factors consists of four other mammalian members, RelA (p65), RelB, NF-kB1 (p105/p50) and NFkB2 (p100/p52) and is involved in many biological processes such as inflammation, immunity, differentiation, cell growth, tumorigenesis and apoptosis. c-Rel is a proto-oncogene that may play a role in differentiation and lymphopoiesis. c-Rel forms different dimer combinations that act as transcriptional activators of repressors (1). Findings indicate that RelA and c-Rel control the development of the epidermis and associated appendages during embryogenesis; they regulate epidermal homeostasis in a postnatal environment through the suppression of innate immune-mediated inflammation (2).



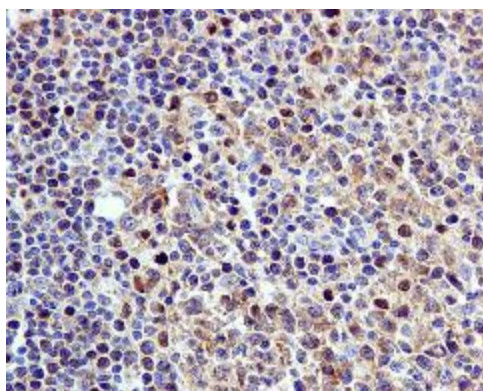
[View online »](#)

Synonyms: C-Rel
Note: Is unsuitable for Flow Cyt.
Protein Families: Druggable Genome, Transcription Factors

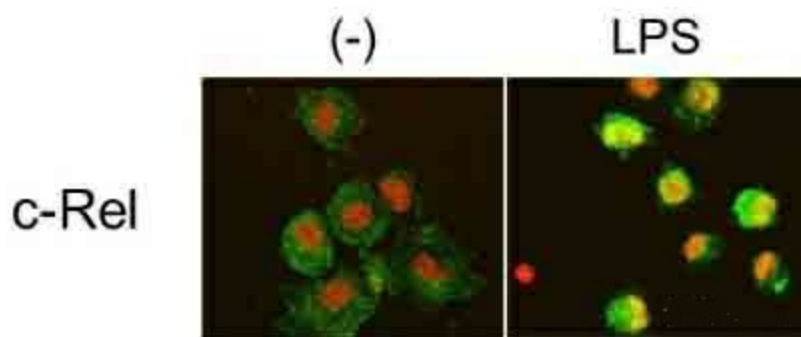
Product images:



Western blot - c-Rel antibody [EPR2558]; All lanes : Anti-c-Rel antibody [EPR2558] at 1/1000 dilution. Lane 1 : Daudi cell lysate. Lane 2 : HuT-78 cell lysate. Lane 3 : K562 cell lysate. Lysates/proteins at 10 ug per lane. Predicted band size : 69 kDa.



Immunohistochemistry (Formalin/PFA-fixed paraffin-embedded sections) - c-Rel antibody [EPR2558]; Immunohistochemical analysis of Human diffuse B-cell lymphoma tissue using TA307406 at a dilution of 1/100.



Immunocytochemistry/ Immunofluorescence - Anti-c-Rel antibody [EPR2558]; TA307406 staining c-Rel in human macrophages by Immunocytochemistry/ Immunofluorescence. Cells were fixed in paraformaldehyde, permeabilized using Triton X-100, blocked with 5% goat serum for 1 hour at 37°C and then incubated with TA307406 at a 1/500 dilution for 3 hours at 37°C. The secondary used was an Alexa-Fluor 488 conjugated goat anti-rabbit monoclonal used at a 1/1000 dilution.