

Product datasheet for **TA307362**

Ube1L (UBA7) Rabbit Monoclonal Antibody [Clone ID: EPR4270]

Product data:

Product Type:	Primary Antibodies
Clone Name:	EPR4270
Applications:	IF, WB
Recommended Dilution:	WB: 1:1000 - 1:10000; IP: 1:10 - 1:100; FC: 1:10 - 1:100; ICC/IF: 1:100 - 1:250
Reactivity:	Human (Does not react with: Mouse, Rat)
Host:	Rabbit
Isotype:	IgG
Clonality:	Monoclonal
Immunogen:	A synthetic peptide corresponding to residues on the C-terminus in human UBA7 was used as an immunogen.
Formulation:	PBS 49%, Sodium azide 0.01%, Glycerol 50%, BSA 0.05%
Conjugation:	Unconjugated
Storage:	Store at -20°C as received.
Stability:	Stable for 12 months from date of receipt.
Gene Name:	ubiquitin like modifier activating enzyme 7
Database Link:	NP_003326 Entrez Gene 74153 Mouse Entrez Gene 7318 Human P41226
Background:	The modification of proteins with ubiquitin is an important cellular mechanism for targeting abnormal or short-lived proteins for degradation. Ubiquitination involves at least three classes of enzymes: ubiquitin-activating enzymes, or E1s, ubiquitin-conjugating enzymes, or E2s, and ubiquitin-protein ligases, or E3s. UBA7 (ubiquitin-like modifier activating enzyme 7) is a member of the E1 ubiquitin-activating enzyme family. This protein is a retinoid target that triggers promyelocytic leukemia (PML)/retinoic acid receptor alpha (RARalpha) degradation and apoptosis in acute promyelocytic leukemia, where it is involved in the conjugation of the ubiquitin-like interferon-stimulated gene 15 protein.
Synonyms:	D8; UBA1B; UBE1L; UBE2
Note:	Is unsuitable for IHC-P.

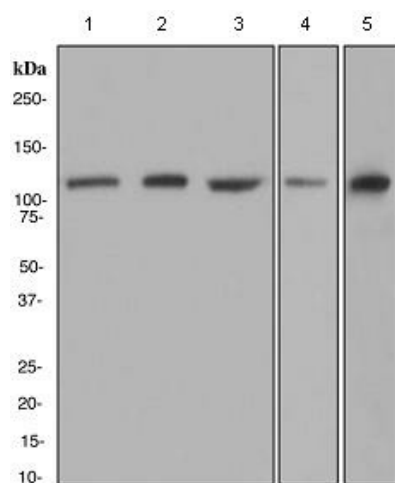


[View online »](#)

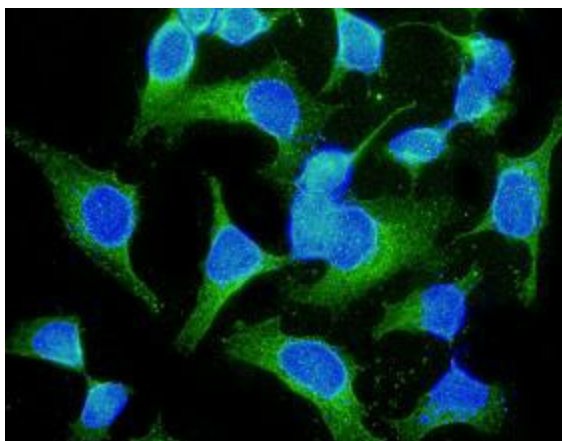
Protein Families: Druggable Genome

Protein Pathways: Parkinson's disease, Ubiquitin mediated proteolysis

Product images:



Western blot - Ube1L antibody [EPR4270]; All lanes : Anti-Ube1L antibody [EPR4270] at 1/1000 dilution. Lane 1 : HepG2 cell lysate. Lane 2 : HL60 cell lysate. Lane 3 : HeLa cell lysate. Lane 4 : Jurkat cell lysate. Lane 5 : Fetal liver lysate. Lysates/proteins at 10 ug per lane. Predicted band size : 112 kDa.



Immunocytochemistry/ Immunofluorescence - Ube1L antibody [EPR4270]; Immunofluorescent staining of HeLa cells using TA307362 at a dilution of 1/100.