

## Product datasheet for **TA307340**

### FADD Rabbit Monoclonal Antibody [Clone ID: EPR4415]

#### Product data:

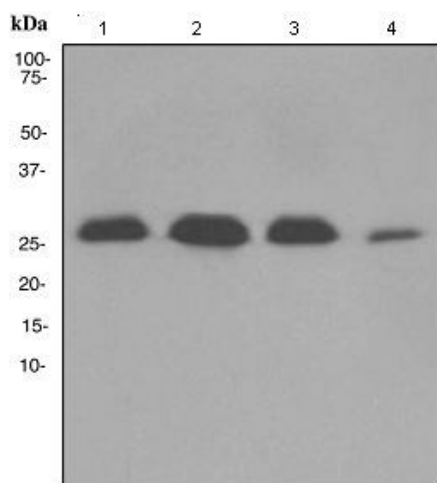
Product Type:	Primary Antibodies
Clone Name:	EPR4415
Applications:	IHC, WB
Recommended Dilution:	WB: 1:1000 - 1:10000; IP: 1:10 - 1:100; IHC-P: 1:100 - 1:250; ICC: 1:100 - 1:250
Reactivity:	Human (Does not react with: Mouse, Rat)
Host:	Rabbit
Isotype:	IgG
Clonality:	Monoclonal
Immunogen:	A synthetic peptide corresponding to residues in human FADD was used as an immunogen.
Formulation:	PBS 49%, Sodium azide 0.01%, Glycerol 50%, BSA 0.05%
Conjugation:	Unconjugated
Storage:	Store at -20°C as received.
Stability:	Stable for 12 months from date of receipt.
Gene Name:	Fas associated via death domain
Database Link:	<a href="#">NP_003815</a> <a href="#">Entrez Gene 14082 Mouse</a> <a href="#">Entrez Gene 266610 Rat</a> <a href="#">Entrez Gene 8772 Human</a> <a href="#">Q13158</a>
Background:	Fas-associating protein with death domain (FADD) is an adaptor protein involved in apoptosis induced by Fas, TNF-R1, and mitogen induced cell proliferation (1). FADD consists of a death domain (DD) at the C-terminal and death effector domain (DED) at the N-terminal (2). DD interacts with Fas and TNF-R1, which exposes the DED portion on the FADD. Unmasked DED binds to the DED of pro-caspase-8, which activates the cysteine protease cascade (3). The development of autoimmune lymphoproliferative (lpr) diseases has been linked to the inactivation of Fas-FADD interaction (4). In addition, a deficiency in FADD can inhibit TRAIL-induced cell apoptosis.
Synonyms:	GIG3; MORT1
Note:	Is unsuitable for Flow Cyt.
Protein Families:	Druggable Genome



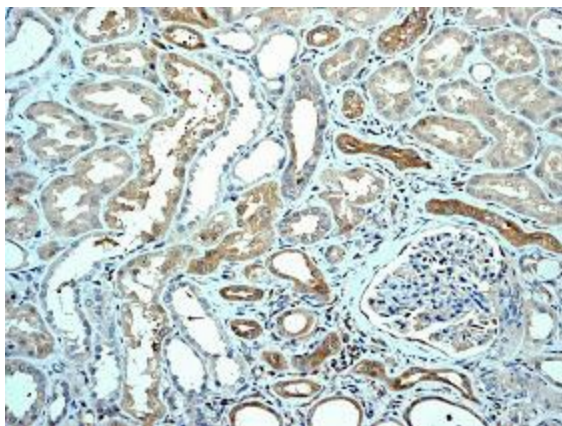
[View online »](#)

**Protein Pathways:** Alzheimer's disease, Apoptosis, Pathways in cancer, RIG-I-like receptor signaling pathway, Toll-like receptor signaling pathway

**Product images:**



Western blot - FADD antibody [EPR4415]; All lanes : Anti-FADD antibody [EPR4415] at 1/1000 dilution. Lane 1 : A431 cell lysate. Lane 2 : Jurkat cell lysate. Lane 3 : HeLa cell lysate. Lane 4 : SKBR-3 cell lysate. Lysates/proteins at 10 ug per lane. Predicted band size : 23 kDa.



Immunohistochemistry (Formalin/PFA-fixed paraffin-embedded sections) - FADD antibody [EPR4415]; Immunohistochemical staining of paraffin-embedded Human kidney tissue using TA307340 at a dilution of 1/100.