

## Product datasheet for **TA307291**

### FOXA1 Rabbit Monoclonal Antibody [Clone ID: EP4131]

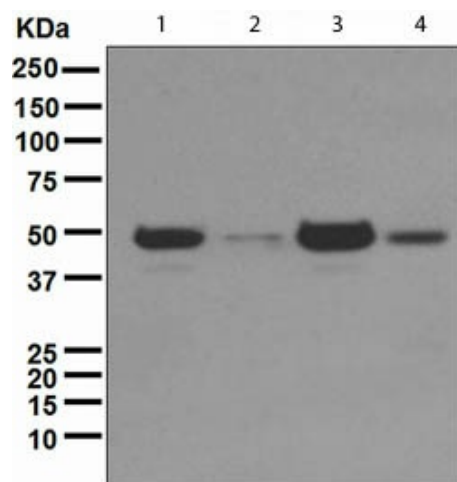
#### Product data:

Product Type:	Primary Antibodies
Clone Name:	EP4131
Applications:	WB
Recommended Dilution:	WB: 1:1000 - 1:10000; IP: 1:10 - 1:100
Reactivity:	Human (Does not react with: Mouse, Rat)
Host:	Rabbit
Isotype:	IgG
Clonality:	Monoclonal
Immunogen:	A synthetic peptide corresponding to residues in human FOXA1 was used as an immunogen.
Formulation:	PBS 49%, Sodium azide 0.01%, Glycerol 50%, BSA 0.05%
Conjugation:	Unconjugated
Storage:	Store at -20°C as received.
Stability:	Stable for 12 months from date of receipt.
Gene Name:	forkhead box A1
Database Link:	<a href="#">NP_004487</a> <a href="#">Entrez Gene 15375 Mouse</a> <a href="#">Entrez Gene 25098 Rat</a> <a href="#">Entrez Gene 3169 Human</a> <a href="#">P55317</a>
Background:	FOXA1 is a member of the forkhead class of DNA-binding proteins. These hepatocyte nuclear factors are transcriptional activators for liver-specific proteins such as albumin and transthyretin, and they also interact with chromatin. Similar family members in mice have roles in the regulation of metabolism and in the differentiation of the pancreas and liver.
Synonyms:	HNF3A; TCF3A
Note:	Is unsuitable for Flow Cyt, ICC or IHC-P.
Protein Families:	ES Cell Differentiation/IPS, Transcription Factors



[View online »](#)

## Product images:



Western blot - FOXA1 antibody [EP4131]; All lanes : Anti-FOXA1 antibody [EP4131] at 1/1000 dilution. Lane 1 : HepG2 lysate. Lane 2 : PC-3 lysate. Lane 3 : SW480 lysate. Lane 4 : Human colon cancer lysate. Lysates/proteins at 10 ug per lane. Predicted band size : 49 kDa. Observed band size : 50 kDa.